



**Temple Grove, Enfield, EN2 8EH**

**welcome to**  
**Temple Grove, Enfield**

Built in 2003, Barnfields are delighted to offer for sale this deceptively spacious four bedroom semi-detached house in a most sought after turning just off Bycullah Road. The property benefits from an additional storage room to the side as well as a 20ft lounge, modern fitted kitchen/breakfast room, two bathrooms and off-street parking. Located close to Enfield Chase Station and local shops on Windmill Hill, this property must be viewed to be fully appreciated!



### **Hallway**

Wood flooring, understairs cupboard, radiator.

### **Kitchen / Breakfast Room**

13' 2" x 13' 1" ( 4.01m x 3.99m )

Range of fitted wall and base units with toning worktops, sink and drainer, built-in oven with induction hob and extractor above, plumbing for washing machine and dishwasher, space for fridge/freezer, tiled floor, double glazed window to front, space for table and chairs, spotlights.

### **WC**

Low level WC, wall mounted hand basin, tiled floor.

### **Lounge**

20' 1" x 13' ( 6.12m x 3.96m )

A spacious room with wood flooring, spotlights, radiator, double glazed windows and door opening to garden.

### **First Floor**

#### **Landing**

Fitted carpet, understairs storage cupboard.

#### **Bedroom One**

13' 7" x 10' 1" ( 4.14m x 3.07m )

Fitted carpet, radiator, double glazed window to rear, door to:-

#### **En-Suite**

Pedestal wash hand basin, low level WC, step-in shower unit, tiled floor, part tiled walls, double glazed window to side.

#### **Bedroom Two**

16' 1" x 9' 9" ( 4.90m x 2.97m )

Fitted carpet, range of built-in wardrobes and storage cupboards, double glazed windows to front.

#### **Bedroom Three**

9' 11" x 8' 1" ( 3.02m x 2.46m )

Fitted carpet, built-in storage cupboard, double glazed windows to front.

#### **Bathroom**

Panelled bath with drop head and hand held shower and glass screen, low level WC with concealed cistern, wall mounted hand basin with drawers beneath, tiled floor, part tiled walls, spotlights.

### **Second Floor**

#### **Loft Room / Bedroom Four**

19' 4" to extremes x 15' 6" to extremes ( 5.89m to extremes x 4.72m to extremes )

A spacious room with fitted carpet, two Velux windows, radiator, two large storage eaves cupboards.

#### **Outside**

##### **Garden**

A pretty rear garden with paved patio area to front, rest laid to lawn with flower bed and Cherry Tree!

##### **Storage Room**

15' 5" x 9' 2" ( 4.70m x 2.79m )

Front gate giving access to a superb brick built storage room with potential to turn into an office or a gym, with power and double glazed window and doors to both front of the property and the garden.

##### **Off-Street Parking**

Composite off-street parking for two cars, slate area with a magnificent Magnolia tree!





***view this property online*** [barnfields.co.uk/Property/ENF119204](http://barnfields.co.uk/Property/ENF119204)





welcome to

## Temple Grove, Enfield

- Four Good Sized Bedrooms
- 20ft Lounge
- Kitchen / Breakfast Room
- Downstairs WC
- Two Bathrooms

Tenure: Freehold EPC Rating: C  
Council Tax Band: G

**£800,000**



Please note the marker reflects the  
postcode not the actual property

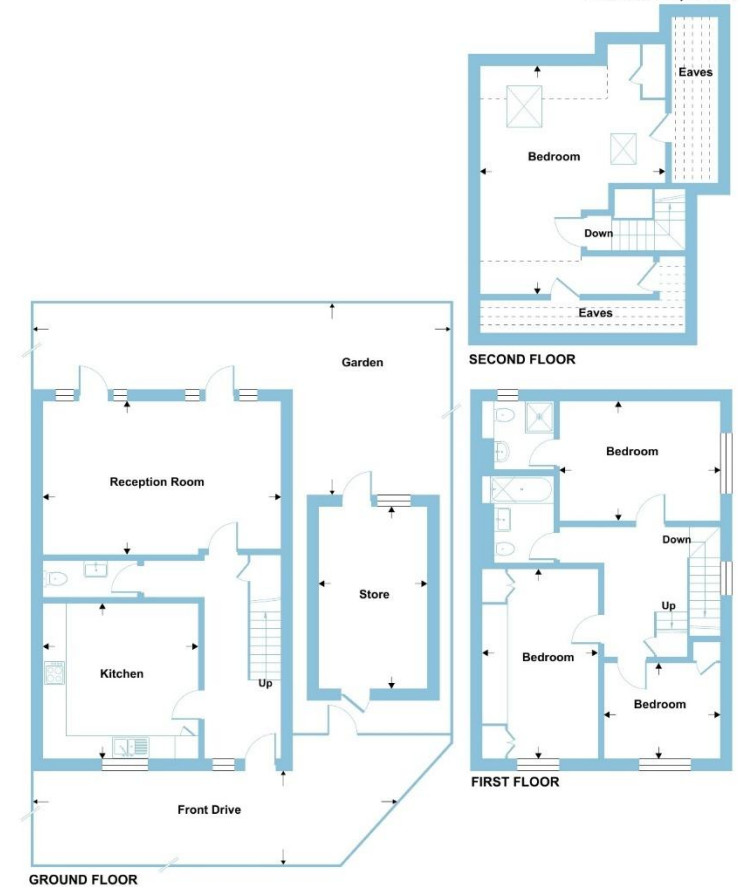


Denotes restricted  
head height

## Temple Grove, Enfield, EN2

Approximate Area = 1418 sq ft / 131.7 sq m  
Limited Use Area(s) = 250 sq ft / 23.2 sq m  
Outbuilding = 141 sq ft / 13 sq m  
Total = 1809 sq ft / 167.9 sq m

For identification only - Not to scale



Floor plan produced in accordance with RICS Property Measurement 2nd Edition,  
Incorporating International Property Measurement Standards (IPMS2 Residential). © nchecom 2026.  
Produced for Barnard Marcus. REF: 1417004



check out more properties at [barnfields.co.uk](https://www.barnfields.co.uk)



Property Ref:  
ENF105636 - 0004

1. MONEY LAUNDERING REGULATIONS Intending purchasers will be asked to produce identification documentation at a later stage and we would ask for your co-operation in order that there is no delay in agreeing the sale. 2. These particulars do not constitute part or all of an offer or contract. 3. The measurements indicated are supplied for guidance only and as such must be considered incorrect. Potential buyers are advised to recheck measurements before committing to any expense. 4. We have not tested any apparatus, equipment, fixtures or services and it is in the buyers interest to check the working condition of any appliances. 5. Where an EPC, or a Home Report (Scotland only) is held for this property, it is available for inspection at the branch by appointment. If you require a printed version of a Home Report, you will need to pay a reasonable production charge reflecting printing and other costs. 6. We are not able to offer an opinion either written or verbal on the content of these reports and this must be obtained from your legal representative. 7. Whilst we take care in preparing these reports, a buyer should ensure that his/her legal representative confirms as soon as possible all matters relating to title including the extent and boundaries of the property and other important matters before exchange of contracts.

Barnfields is a trading name of Sequence (UK) Limited which is registered in England and Wales under company number 4268443, Registered Office is Cumbria House, 16-20 Hockliffe Street, Leighton Buzzard, Bedfordshire, LU7 1GN. VAT Registration Number is 500 2481 05.



**020 8363 3394**



[info@barnfields.com](mailto:info@barnfields.com)



1a Windmill Hill, Enfield, Middlesex, EN2 6SE



[barnfields.co.uk](https://www.barnfields.co.uk)