



Alex & Matteo
ESTATE AGENTS



Alex & Matteo
ESTATE AGENTS



Alex & Matteo
ESTATE AGENTS



Alex & Matteo
ESTATE AGENTS

Simms Road, London, SE1 5LP

****UNFURNISHED****

A stylish one bedroom, house located in Bermondsey only a short walk away from Bermondsey Underground station and South Bermondsey station.

The first floor boasts a naturally bright reception and tidy kitchen and dining room with access to the generous garden. The second floor features a spacious double bedroom, modern bathroom, and a home office.

The surrounding area boasts a plethora of local amenities such as supermarkets, bars, restaurants, bakery and parks including Southwark Park.

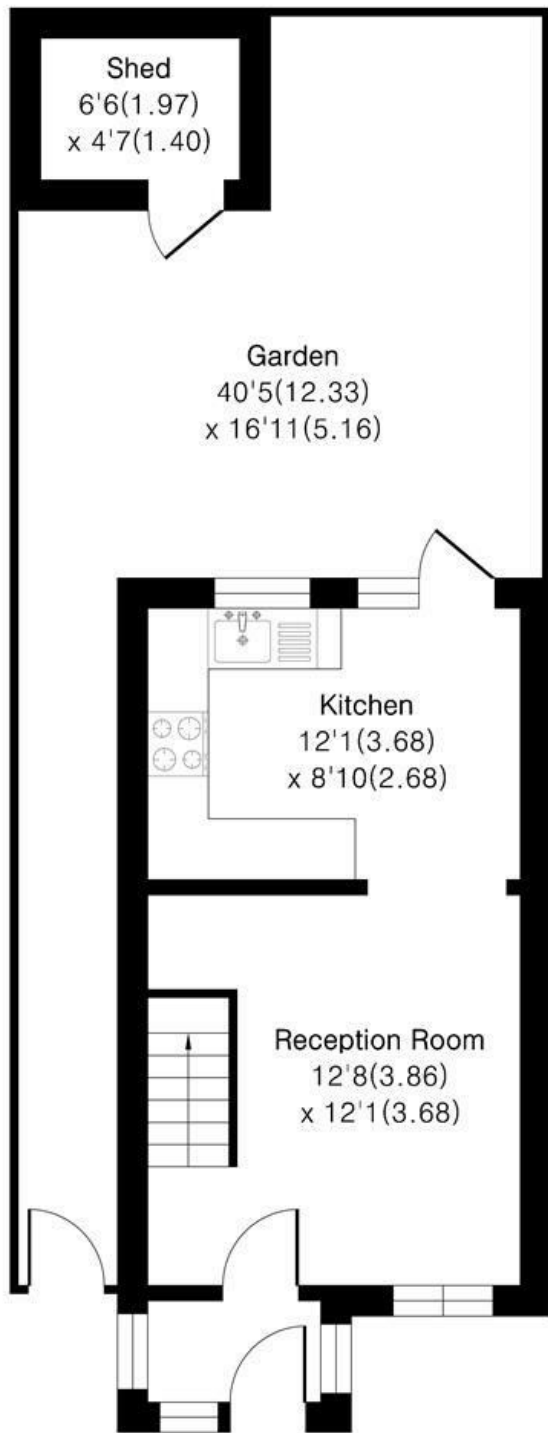
- Well-kept one bedroom apartment
- Excellent Location
- Good transport links
- Private garden
- Close to local amenities

Alex & Matteo
ESTATE AGENTS

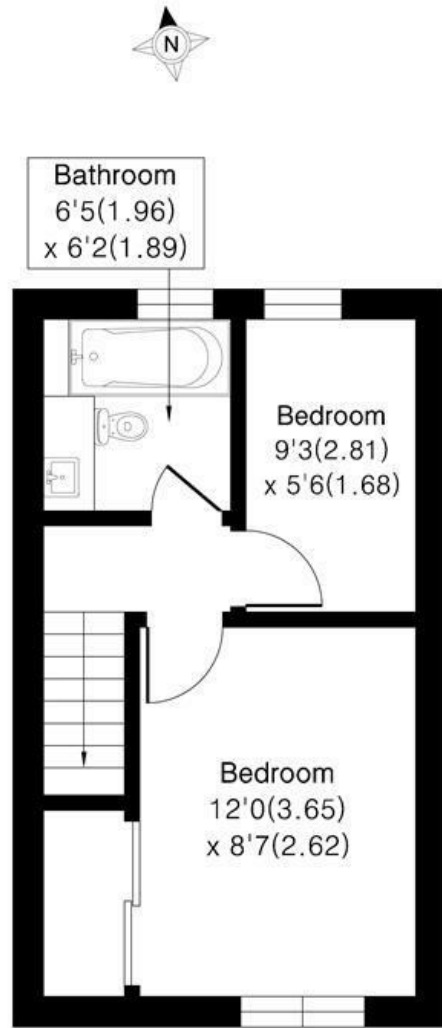
£2,000 Per month

Simms Road SE1

Approximate Area = 551 sq ft / 51.2 sq m
 Shed Area = 29.0 sq ft / 2.7 sq m
 Total Area = 580 sq ft / 53.9 sq m
 For identification only - Not To Scale



Ground Floor



First Floor



Floor plan Produced in accordance with RICS Property Measurement 2nd Edition. Incorporating International Property Measurement Standards (IPMS2 Residential). Produced for Alex & Matteo Estate Agents.



Energy Efficiency Rating		Current	Potential
Very energy efficient - lower running costs			
(92 plus) A			
(81-91) B			
(69-80) C			
(55-68) D			
(39-54) E			
(21-38) F			
(1-20) G			
Not energy efficient - higher running costs			
England & Wales	EU Directive 2002/91/EC		