



24 Springfield Mill, Sandiacre, Nottingham, NG10 5QD

£1,000 Per Month

24 Springfield Mill, Nottingham NG10 5QD

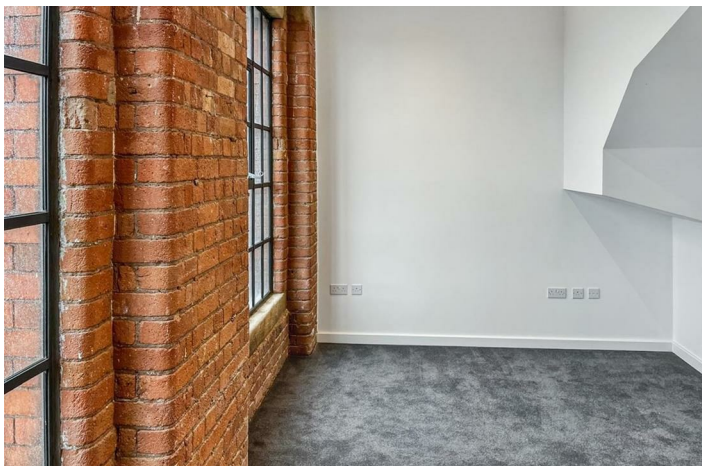
*** LOVELY TWO DOUBLE BEDROOM DUPLEX TOP FLOOR APARTMENT ***

Robert Ellis are delighted to present to the market this two double bedroom duplex top floor apartment located in this iconic Victorian lace mill conversion. Secure off-street parking, high specification with open plan living kitchen with balcony enjoying views over the canal and surrounding area. En-suite to principal bedroom.

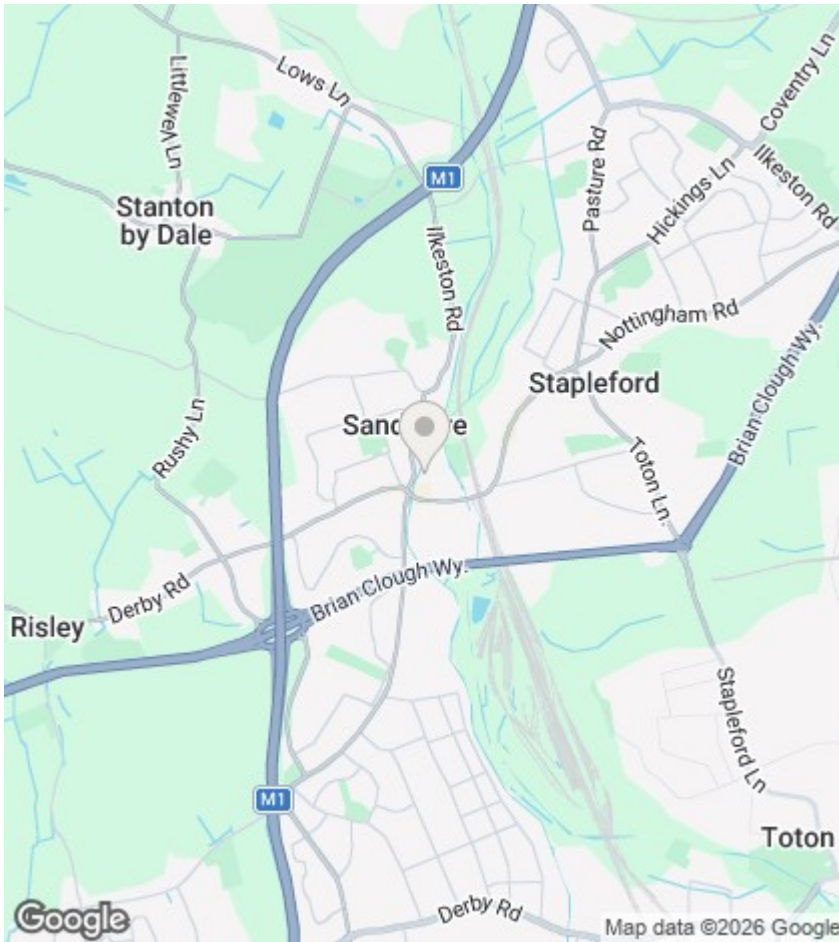
This stylish apartment retains some elements of the original character and heritage of the building and has been fully refurbished to an extremely high standard with features including an open plan living dining kitchen with high quality units, integrated appliances and patio doors opening to a balcony which enjoys views over the canal and surrounding area.



Council Tax Band:







Directions

Viewings

Viewings by arrangement only. Call 0115 9496740 to make an appointment.

EPC Rating:

C

Energy Efficiency Rating		Current	Potential
Very energy efficient - lower running costs			
(92 plus) A			
(81-91) B			
(69-80) C		69	
(55-68) D			
(39-54) E			
(21-38) F			
(1-20) G			
Not energy efficient - higher running costs			
England & Wales		EU Directive 2002/91/EC	