

EMBASSY

LETTINGS & MANAGEMENT



20 Magdalene Close, Cambridge, CB24 3EG

£1,400 Per month

A brilliantly presented Modern Terrace Property within the North Cambridge Village of Lonstanton. The village offers all the necessary amenities, with Cambridge City a short drive, cycle or Bus (Guided Bus) journey away.

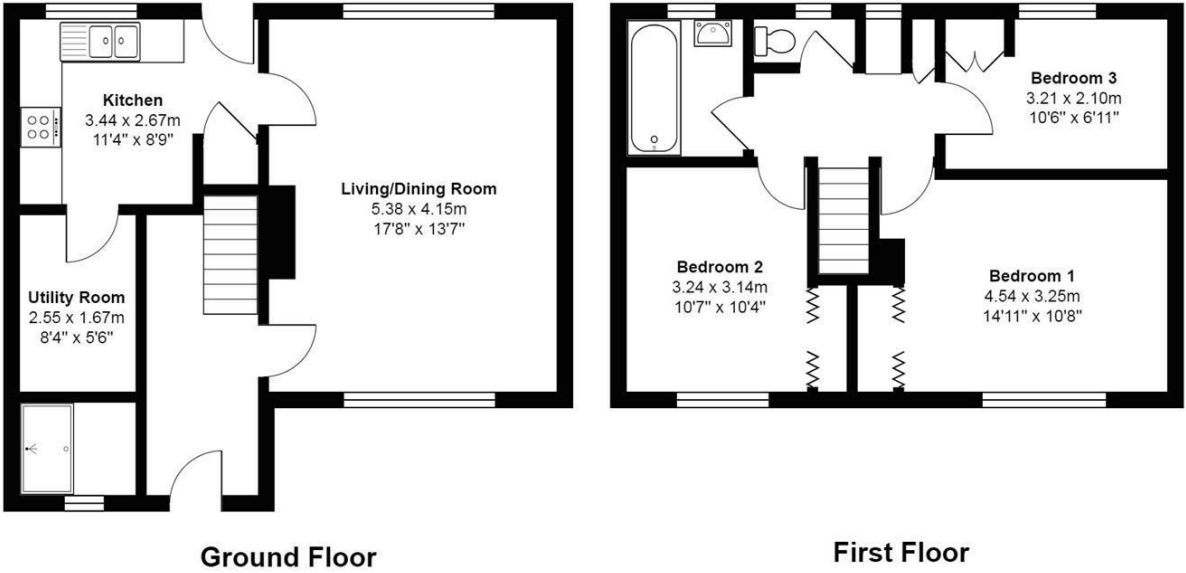
The Entrance Hallway (Incl Stairway) is currently undergoing improvements and will incorporate a ground floor shower room finished to a high standard. The Hallway leads into the Large Lounge/Dining Room, with both front and rear aspects.

Further round to the rear is a Modern Kitchen with Integrated Gas Hob and Electric Oven. Off from the Kitchen towards the front of the property is a Utility Room with additional Doorway to the front of the property.



Floor Plan

20 Magdalene Close, Longstaton

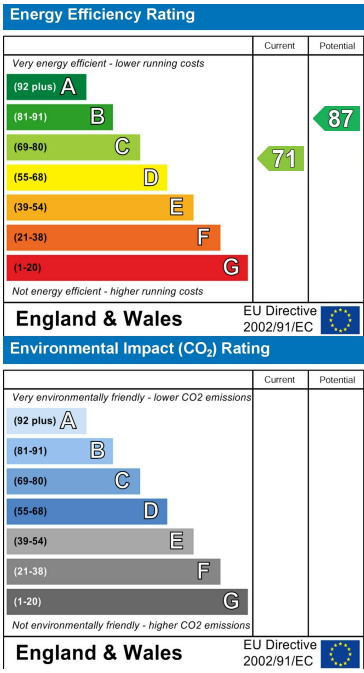


Total Area: 87.8 m² ... 945 ft²
All measurements are approximate and for display purposes only

Area Map



Energy Efficiency Graph



These particulars, whilst believed to be accurate are set out as a general outline only for guidance and do not constitute any part of an offer or contract. Intending purchasers should not rely on them as statements of representation of fact, but must satisfy themselves by inspection or otherwise as to their accuracy. No person in this firms employment has the authority to make or give any representation or warranty in respect of the property.