

Churchills

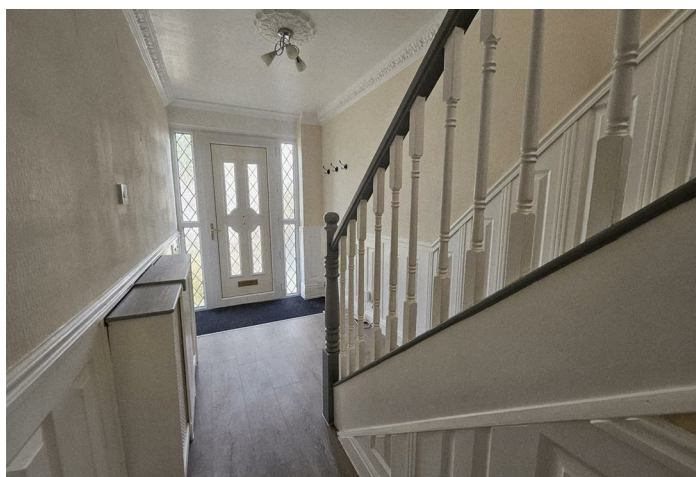


Hoylelake Drive

Swinton, Mexborough S64 8ST

- SEMI-DETACHED PROPERTY
 - THREE BEDROOMS
- WHITE KITCHEN & APPLIANCES
 - FITTED WARDROBES
 - AMPLE PARKING
- LARGER THAN AVERAGE
- THREE RECEPTION ROOMS
 - SHOWER ROOM
 - DETACHED GARAGE
 - EPC RATING C

£1,100 Per Month



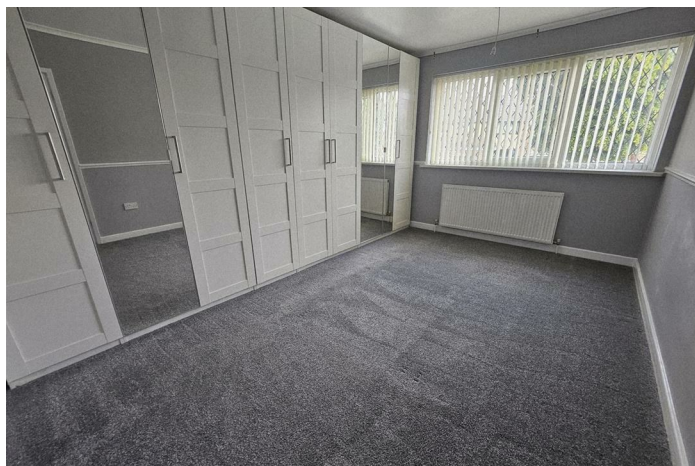


Location





Local Authority ROTHERHAM
Council Tax Band B
EPC Rating C



Churchills Lettings Office

16 High Street, Mexborough, South
Yorkshire, S64 9AS

Contact

01709 582880
Info@churchillsestateagents.com
www.churchillsestateagents.com

Agents Note: Whilst every care has been taken to prepare these particulars, they are for guidance purposes only. All measurements are approximate and for general guidance purposes only and whilst every care has been taken to ensure accuracy, they should not be relied upon and potential buyers/tenants are advised to recheck the measurements.