



Symonds
& Sampson

9 Ridgeway
Bridport, Dorset

9 Ridgeway

Bridport
Dorset DT6 3ED

A spacious and versatile detached house offering between 4/6 bedrooms, in a peaceful location in the village of Bradpole, located a short while from Bridport town centre.



- 4/6 bedroom detached house
 - Large gardens
 - Garage and parking



Offers In Excess Of **£525,000**
Freehold

Bridport Sales
01308 422092
bridport@symondsandsampson.co.uk



THE PROPERTY

Originally built in the 1950s, and sympathetically extended in 2000 to become a large family home, the property is set in a large garden, with a potential building plot subject to planning permission.

The property is entered through the porch to the front hallway, which leads to the kitchen and front reception room. The large kitchen/diner is triple aspect, and is light and airy, with a bay window overlooking the front garden it provides a range of floor and wall cupboards. The floor cupboards have recently been renewed with solid oak carcasses, painted solid ash doors, solid beech worktops, integrated with a ceramic hob with extractor over, double electric oven, dishwasher and freezer. The dining room has French doors opening onto to the decking area, and has ample room for a large table and chairs.

There is a spacious hall which hosts an under stairs cupboard with plumbing for a washing machine and an additional cloakroom with corner shower. Leading off the hall way into the lounge and 2 additional reception rooms. Centred around a feature wood burner the lounge has a bay window and two pairs of French doors, allowing views out onto the gardens and access to decking. There are two additional reception rooms, both with fitted wardrobes, offering flexible options, having previously been used as 2 additional bedrooms, currently used as a study/playroom and a hobbies room.

On the first floor, the large master bedroom has walk in wardrobes and ensuite with double shower, wash basin and wc, towel radiator and Velux window. There are two further double bedrooms and a single bedroom upstairs.

The family bathroom is equipped with a spa bath and electric shower, fitted cupboards, basin and wc.

OUTSIDE

The property is situated in a large garden plot extending to approximately 0.23 acres (0.09 hectare). The garden has been organically managed and is widely planted with shrubs, flowers, and hedges to support wildlife. The property is approached by a tarmac drive with parking for 2 cars, adjoined by a gravel area with parking for 2 further cars. A block paved path and archway leads to the front garden which is secluded, with lawn, flower beds and a seating area. A side access leads to the rear garden terrace, and deck with pergola over and there is a paved seating area with views to distant hills. Steps lead to a further garden area with patios, lawns, and flower beds. There is a side access gate to a shared private drive.

Another secluded garden is accessed through two rose arches, with a lawn, and south facing seating area with a pergola and to a further area of garden with garage, workshop and double gates to another parking area. Rear access to the property and garage is provided over a shared private drive.

SITUATION

The property comprises a well proportioned 4/6 bedroom chalet bungalow, built principally of a brick construction under a tiled roof, benefiting from gas central heating and uPVC double glazing. The versatile living accommodation has been the subject of considerable improvement with the introduction of a loft conversion and extension. To the rear is a large relatively level garden, providing various terraces and distant views towards open countryside. Walking distance to primary and secondary schools, shops and countryside.

Bridport is an active market town and popular holiday area, designated as being in an Area of Outstanding Natural Beauty, where street

markets are held twice weekly. The town provides a comprehensive range of shopping and professional facilities, primary and secondary schools, recreational and social amenities. Ten minutes drive to the pretty harbour at West Bay, with lovely beaches is close by and the area provides the opportunity for enjoying the Jurassic Coast, recently designated a World Heritage Site.

SERVICES

Mains gas, electricity, water and drainage.

The Vaillant condensing gas boiler and new hot water tank were installed in 2021. The boiler has 5 years warranty remaining. Serviced in February 2026.

Broadband speed: Superfast broadband is available.

Mobile phone coverage: network coverage is good both indoors and outdoors.

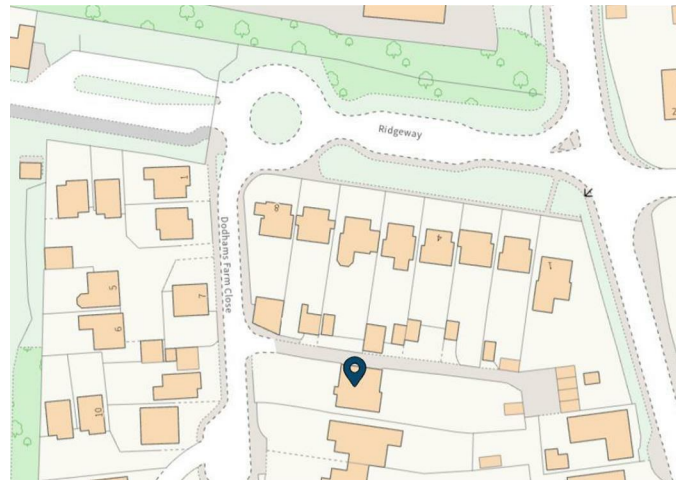
LOCAL AUTHORITY

Dorset Council - 01305 251010

Council Tax Band: D

AGENT NOTE

Please note the photos were taken in 2023.



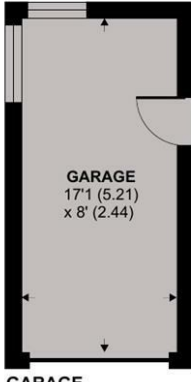
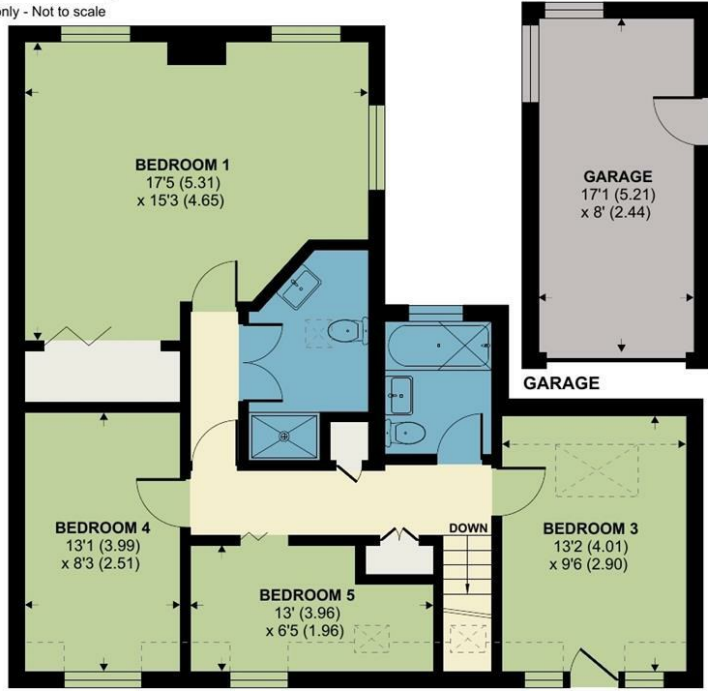
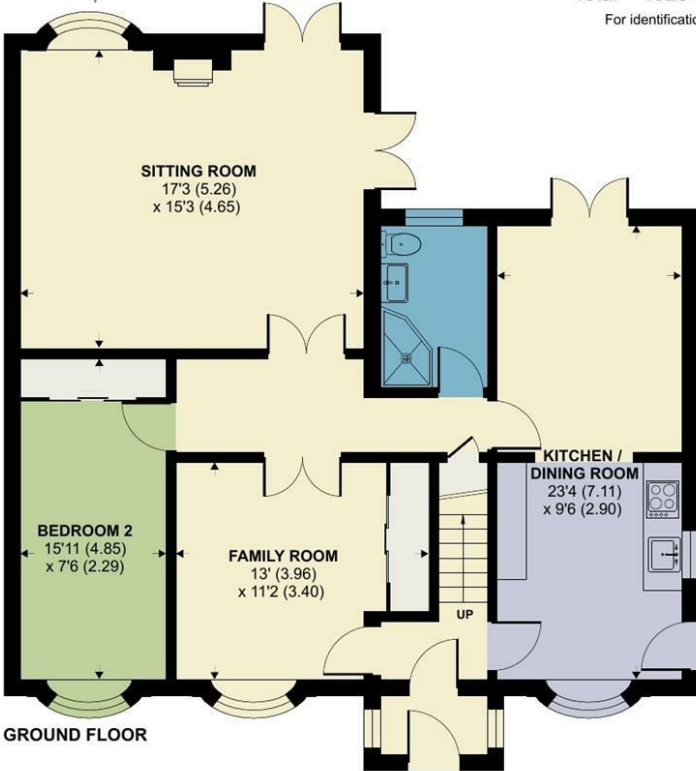


Ridgeway, Bridport

Approximate Area = 1738 sq ft / 161.4 sq m
Limited Use Area(s) = 51 sq ft / 4.7 sq m
Garage = 137 sq ft / 12.7 sq m
Total = 1926 sq ft / 178.8 sq m

For identification only - Not to scale

Energy Efficiency Rating		Current	Potential
Very energy efficient - lower running costs			
(92-100)	A		83
(81-91)	B		
(69-80)	C	73	
(55-68)	D		
(39-54)	E		
(21-38)	F		
(1-20)	G		
Not energy efficient - higher running costs			
England & Wales		EU Directive 2002/91/EC	83



GROUND FLOOR

FIRST FLOOR

Denotes restricted head height



Floor plan produced in accordance with RICS Property Measurement Standards incorporating International Property Measurement Standards (IPMS2 Residential). © ntechcom 2024. Produced for Symonds & Sampson. REF: 1149181



Bridport/DME/17032026REV



01308 422092

bridport@symondsandsampson.co.uk
Symonds & Sampson LLP
23, South Street,
Bridport, Dorset DT6 3NU



Important Notice: Symonds & Sampson LLP and their Clients give notice that: 1. They have no authority to make or give any representations or warranties in relation to the property. These particulars do not form part of any offer or contract and must not be relied upon as statements or representations of fact. 2. Any areas, measurements or distances are approximate. The text, photographs and plans are for guidance only and are not necessarily comprehensive. It should not be assumed that the properties have all necessary planning, building regulation or other consents and Symonds and Sampson LLP have not tested any services, equipment of facilities. 3. We have not made any investigation into the existence or otherwise of any issues concerning pollution of the land, air or water contamination and the purchaser is responsible for making his/her own enquiries in this regard. 4. The property is sold subject to and with the benefit of all existing wayleaves, easements and rights of way whether public or private, specifically mentioned or not. The vendors shall not be required to define any such rights, privileges or advantages.

SALES | LETTINGS | AUCTIONS | FARMS & LAND | COMMERCIAL | NEW HOMES | PLANNING & DEVELOPMENT