



CASSON SQUARE, SE1

£2,700 pcm

Available early February, this stylish studio is located in the sought-after Southbank Place. Finished to a high standard with contemporary design and smart use of space, it offers a bright and comfortable living area with residents benefitting from exclusive access to a luxury swimming pool, state-of-the-art gym, and 24-hour concierge service.

- Studio Apartment
- Fully Furnished
- 24-hour Concierge
- Gym & Spa Facilities
- 0.1 miles to Waterloo Station
- Residents Gym and Pool

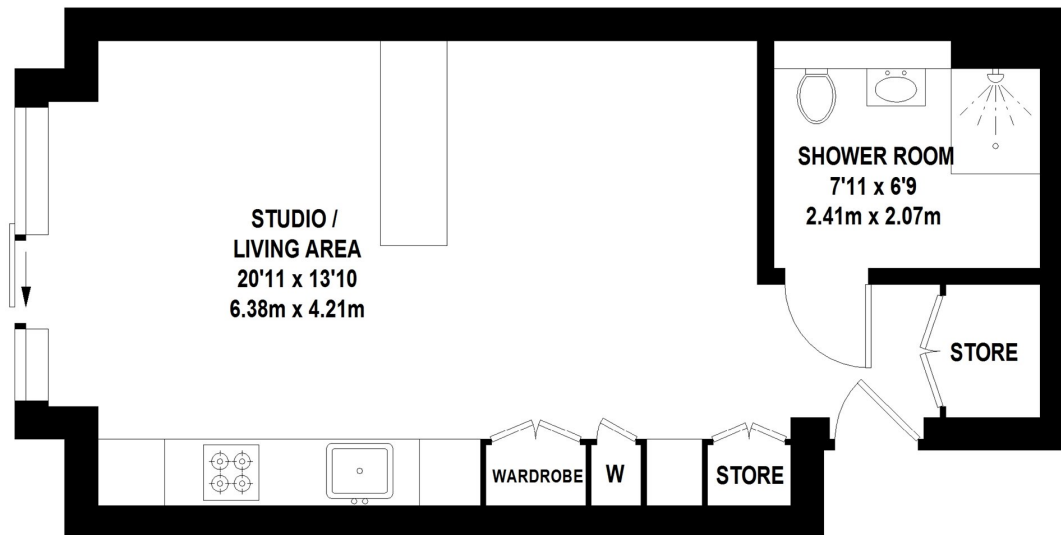


ABOUT THE HOME

Situated in the heart of Waterloo on the vibrant South Bank, Southbank Place is moments from the London Eye, cultural venues, and Lower Marsh Market. Excellent transport links include Waterloo Station nearby, with multiple Underground lines and National Rail connecting you across London.







TOTAL APPROX. FLOOR AREA 382 SQ.FT. (35.48 SQ.M)

Whilst every attempt has been made to ensure the accuracy of the floor plan contained here, measurements of door, windows, rooms and any other items are approximate and no responsibility is taken for any error, omission, or mis-statement. This plan is for illustrative purposes only and should be used as such by any prospective purchaser. The services, systems and appliances shown have not been tested and no guarantee as to their operability or efficiency can be given
© 2021 (ID784941)

LiFE RESIDENTIAL

252 Westminster Bridge
Road, London, SE1 7PD
Sales: 020 7476 0125
Lettings: 020 7620 1600

Energy Rating: B. We aim to make our particulars both accurate and reliable. However they are not guaranteed; nor do they form part of an offer or contract. If you require clarification on any points then please contact us, especially if you're traveling some distance to view. Please note that appliances and heating systems have not been tested and therefore no warranties can be given as to their good working order.