



Bellevue Close, Princetown Yelverton PL20 6RT

welcome to

Believer Close, Princetown Yelverton

*** CASH BUYERS ONLY ***

A stunning THREE BEDROOM semi-detached property with LARGE REAR GARDEN & CONSERVATORY, PARKING, wonderful VIEWS and MODERN DECOR throughout. To arrange YOUR viewing CALL TODAY.

Entrance Hall

Access from the front door situated to the side of the property, immediate access to the spacious conservatory and door through to landing.

Upstairs W/C

W/C, handwash basin.

Conservatory

A spacious conservatory, currently used as a utility area. Double glazed windows to front elevation and patio doors to garden.

Lounge

Open fireplace with surround, radiator, understair storage with fuse box and double glazed window to front elevation.

Bathroom

A newly fitted jacuzzi bath, vanity sink unit and radiator.

Kitchen

Wall and base units, tiled flooring, sink drainer and door to rear garden.

First Floor Landing

Access to all three bedrooms and bathroom, separate WC too.

Bedroom 1

A double bedroom with double glazed window to front elevation with views over the countryside and radiator.

Bedroom 2

A second double bedroom with double glazed window to rear elevation, two storage cupboards, radiator.

Bedroom 3

Double glazed window to rear elevation.





check out more properties at fox-and-sons.co.uk



welcome to

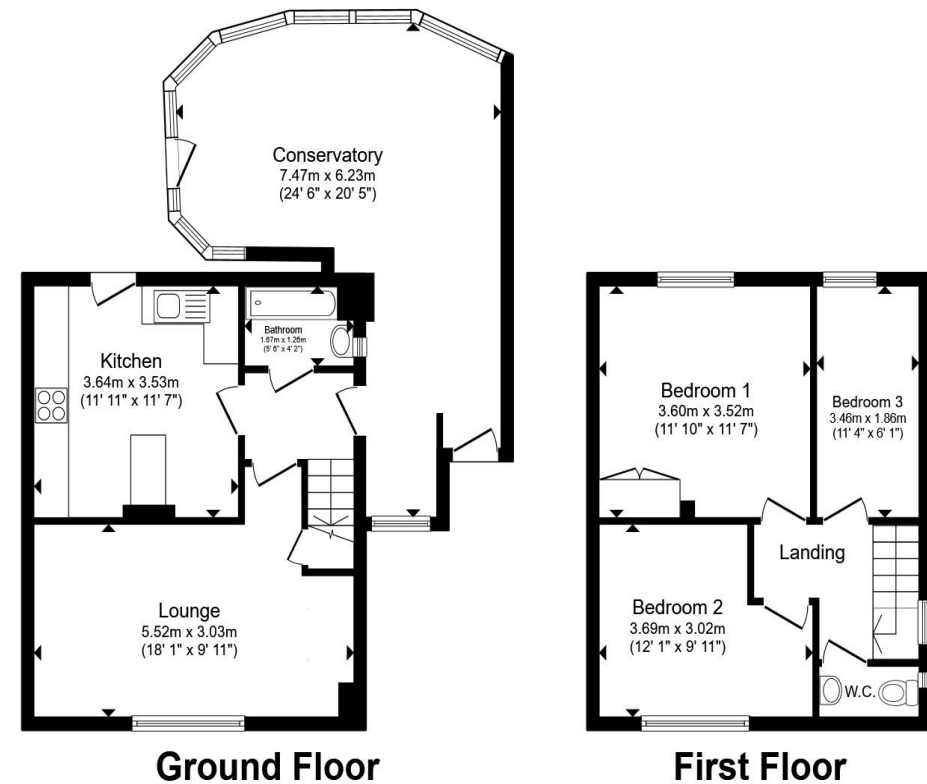
Bellever Close, Princetown Yelverton

- Semi- Rural Location in Princetown
- Council Tax Band A
- Solar Panels and Air Source Heating Pump (Fully owned)
- Conservatory
- Large Rear Garden

Tenure: Freehold EPC Rating: Awaited

Council Tax Band: A

£217,000



Total floor area 102.8 m² (1,107 sq.ft.) approx

This floor plan is for illustrative purposes only. It is not drawn to scale. Any measurements, floor areas (including any total floor area), openings and orientation are approximate. No details are guaranteed, they cannot be relied upon for any purpose and they do not form part of any agreement. No liability is taken for any error, omission or misstatement. A party must rely upon its own inspection(s). Powered by www.propertybox.io

 fox & sons

check out more properties at fox-and-sons.co.uk



Property Ref:
PYP104523 - 0003

1. MONEY LAUNDERING REGULATIONS Intending purchasers will be asked to produce identification documentation at a later stage and we would ask for your co-operation in order that there is no delay in agreeing the sale. 2. These particulars do not constitute part or all of an offer or contract. 3. The measurements indicated are supplied for guidance only and as such must be considered incorrect. Potential buyers are advised to recheck measurements before committing to any expense. 4. We have not tested any apparatus, equipment, fixtures or services and it is in the buyers interest to check the working condition of any appliances. 5. Where an EPC, or a Home Report (Scotland only) is held for this property, it is available for inspection at the branch by appointment. If you require a printed version of a Home Report, you will need to pay a reasonable production charge reflecting printing and other costs. 6. We are not able to offer an opinion either written or verbal on the content of these reports and this must be obtained from your legal representative. 7. Whilst we take care in preparing these reports, a buyer should ensure that his/her legal representative confirms as soon as possible all matters relating to title including the extent and boundaries of the property and other important matters before exchange of contracts.

Fox & Sons is a trading name of Sequence (UK) Limited which is registered in England and Wales under company number 4268443, Registered Office is Cumbria House, 16-20 Hockliffe Street, Leighton Buzzard, Bedfordshire, LU7 1GN. VAT Registration Number is 500 2481 05.

Not for marketing purposes INTERNAL USE ONLY



01752 344349



plympton@fox-and-sons.co.uk



143 Ridgeway, Plympton, PLYMOUTH, Devon,
PL7 2HJ



fox-and-sons.co.uk