

Holland Park Mews

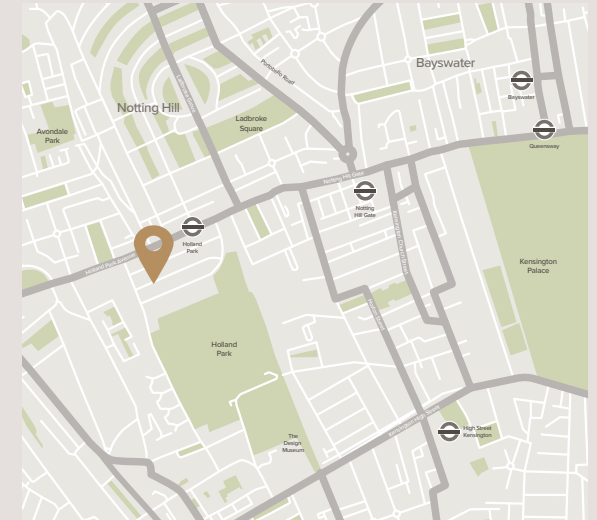
Holland Park W11





A charming mews house situated in the elegant Holland Park Mews. Set over two floors, the ground floor offers wonderful entertaining space, as well as a garage, with the principal bedroom suite, second bedroom and bathroom located on the first floor.





Location

Located a few minutes on foot from Holland Park Underground station (Central Line), the house is convenient for the shops, cafés and the open spaces of Holland Park as well as Notting Hill Gate.

Terms

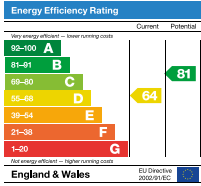
Tenure: Freehold

Listing: Grade II

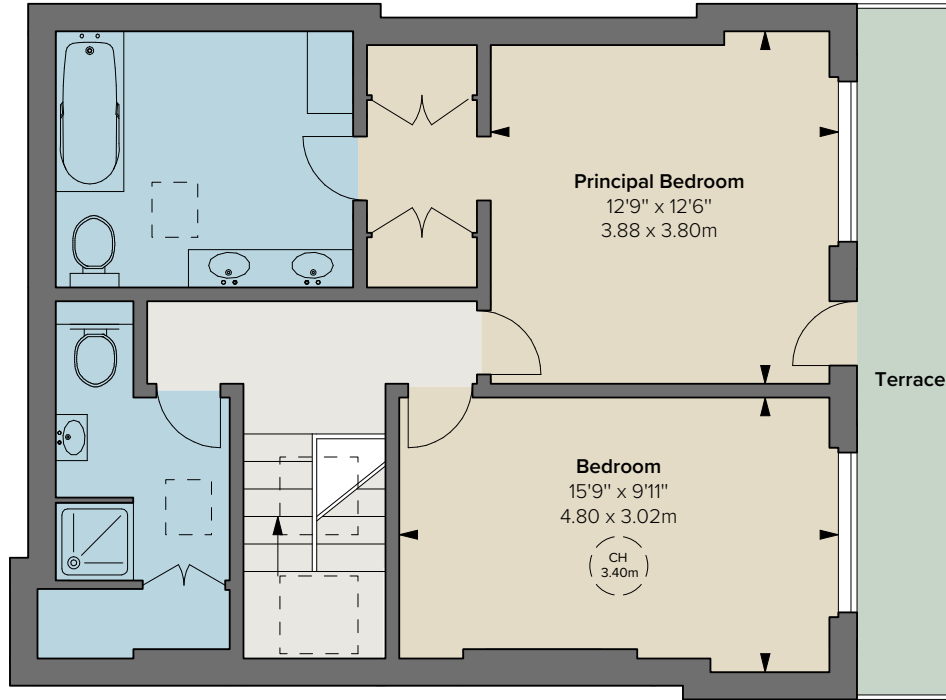
Local Authority: The Royal Borough of Kensington & Chelsea

Council Tax: Band G

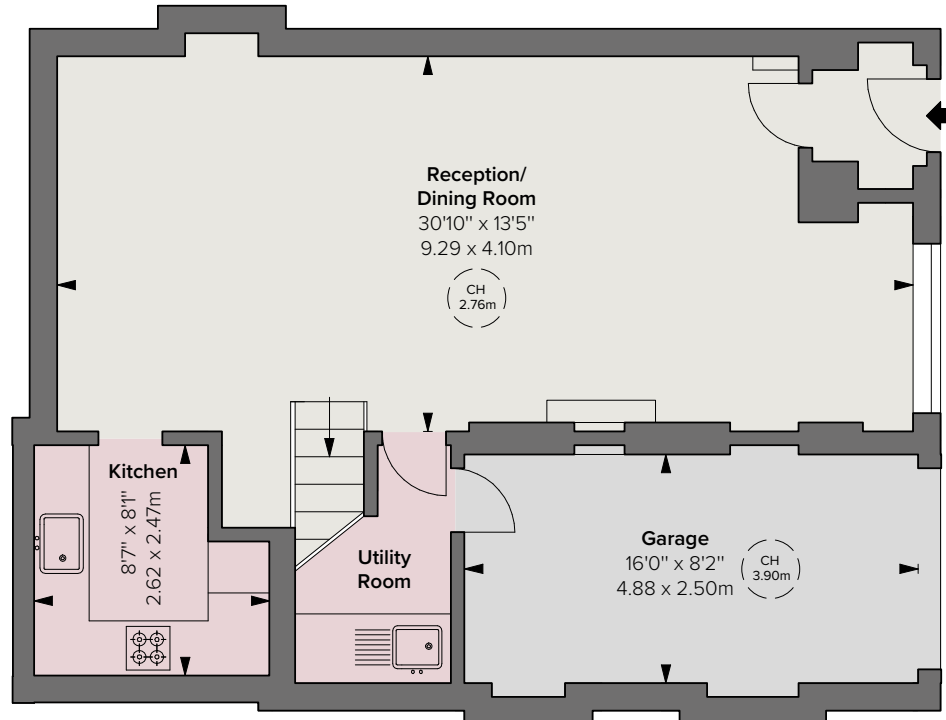
EPC: Rating D



First Floor



Ground Floor



Floorplan for guidance only, not to scale or valuations purposes. It must not be relied upon as a statement of fact. All measurements and areas are approximate and have been prepared in accordance with the current edition of the RICS Code of Measuring Practice.

These particulars are for general information only and do not constitute any part of an offer or contract. All statements contained therein are made without responsibility on the part of the vendors or lessors and are not to be relied upon as statement or representation of fact. Intending purchasers or lessees must satisfy themselves, by inspection, or otherwise, as to the correctness of each of the statements or dimensions contained in these particulars. This floorplan is for guidance only and not for valuation purposes. 14/04/26 DSC-250109B-04-JF

Approximate Gross Internal Area

1,334 sq ft / 124.02 sq m

CH: Ceiling Height

© Alex Winship Photography



DS Churchill

29 Farm Street London W1J 5RL
+44 (0)20 7629 7563
info@dschurchill.com
dschurchill.com