

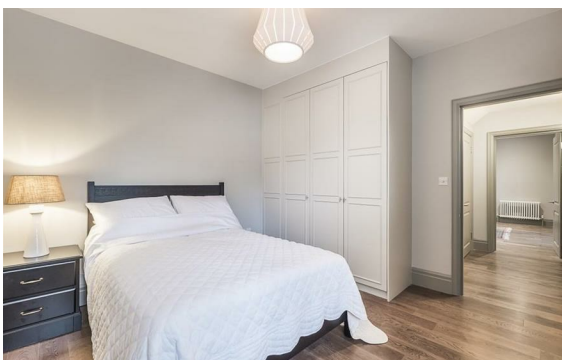


Charles Street, Mayfair, London, W1J

Rent £1,685 PCM

2 Bed | 2 Bath | 1 Reception

Please call us on 020 7724 2233 or email us info@newingtonstates.com to book a viewing.



A stylish contemporary two-bedroom apartment situated on the third floor of one of Mayfair's most desirable purpose-built developments, benefiting from lift access.

The property offers a spacious open-plan reception area with a beautifully designed kitchen fitted with high-spec appliances. Both double bedrooms are generously sized, featuring excellent wardrobe storage and modern en-suite bathrooms, making the apartment ideal for a couple seeking additional guest space or for two professional sharers thanks to the well-balanced layout.

EPC rating: C

Energy Efficiency Rating: C

Agents Note: Whilst every care has been taken to prepare these particulars, they are for guidance purposes only. All measurements are approximate and are for general guidance purposes only and whilst every care has been taken to ensure their accuracy, they should not be relied upon and potential buyers/tenants are advised to recheck the measurements.

NEWINGTON
— ESTATES —

60 Upper Montagu Street

London

W1H 1SN

020 7724 2233

info@newingtonstates.com

<http://www.newingtonstates.com>