



Holmesdale Road, TW11

£2,250,000

Dexters



Holmesdale Road, TW11

A fabulous, gated, five-bedroom, semi-detached family home situated in an enviable 'River Roads' location. Featuring a south-facing garden, garage and well presented throughout, this home offers flexible living space on every floor spanning in excess of circa 3000 sq ft.

On the ground floor there is a wonderful entrance hallway with access to the integral garage, a reception room and a downstairs WC. The open plan kitchen/dining/family room is the hub of this home, offering double-aspect windows leading to the landscaped south-facing garden. The kitchen features modern shaker-style units with granite surfaces and a breakfast bar. The walled garden is mature, with side access and a patio, and provides an ideal setting for hosting elegant gatherings with access to Langdon gardens

The first floor provides the principal bedroom with built-in wardrobes and an en-suite. Two further double bedrooms are served by a family bathroom. Completing the first floor is a spacious reception room. The second-floor landing has a large laundry cupboard, two double bedrooms, and one single bedroom/study with a large bathroom with a separate shower.

Holmesdale Road is located off Kingston Road and Broom Road. It is the perfect location for school catchment, transport from Teddington and Hampton Wick mainline station along with Teddington High Street.

Features

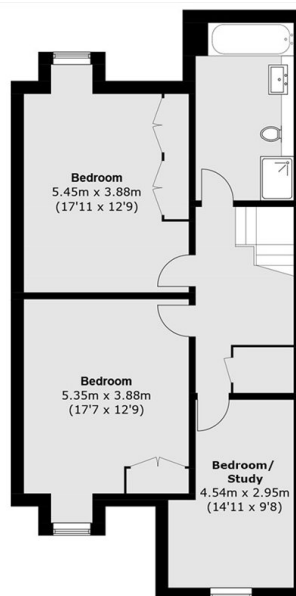
- Semi-Detached
- Garage
- 3000 Sq Ft
- South Facing Garden
- Off Street Parking For 3 Cars
- EV Charger



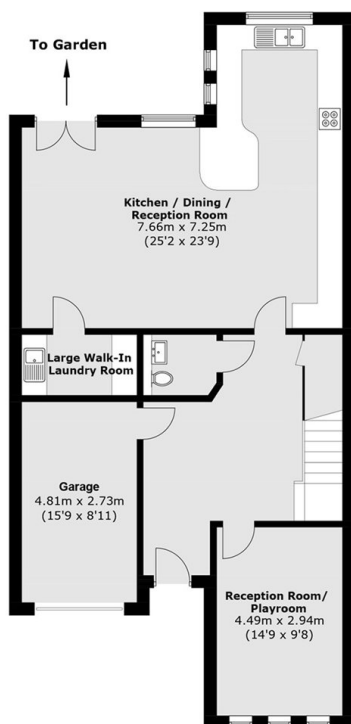




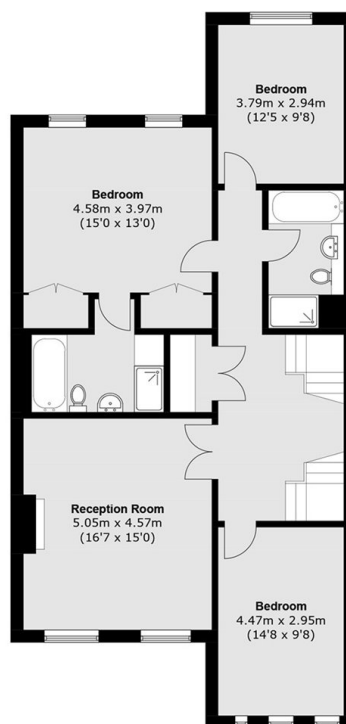
Holmesdale Road, Teddington, TW11



Second Floor



Ground Floor



First Floor

Total area (approx.): 280.4 sq. m (3,018.2 sq. ft)
(Including garage)