



Let **UK** Home

2 Bedrooms

Flat

Located in Wembley

£2,500 Per Month



info@letukhome.co.uk

<https://www.letukhome.co.uk/>

01795 358 886



12 Quay Walk Wembley

HA0 1BE



Let UK Home present this spectacular two-bedroom apartment in Waterview House, part of the Grand Union development located in Alperton.

This property comprises a large bright open plan kitchen and living room leading to a private balcony, two double bedrooms (master with built-in wardrobes and ensuite), a large family sized bathroom and ample storage. A virtual viewing is provided.

Residents of this exceptional development will have exclusive use of fitness gym, bowling alley and residents lounge. Furthermore, residents will also benefit from a concierge and an unrivalled selection of shops, bars, restaurants, leisure facilities and beautiful courtyards.

Grand Union is located in the Alperton between Wembley and Ealing, enjoying a variety of resources in both boroughs. There are many restaurants, bars, shopping malls, supermarkets, bank branches, post offices, etc. in the surrounding area.

The educational resources around the development are very abundant, and transportation to major well-known universities is also very convenient. From nearby stations of this development, you can take the subway to University College London (UCL), Westminster University, Central Saint Martins, London School of Economics (LSE), and King's College London (KCL).

You can walk to Stonebridge Park Station to catch the Bakerloo Line or to Alperton Station to catch the Piccadilly Line. By bike, you can reach Neasden Temple, London Designer Outlet, and Wembley Stadium.

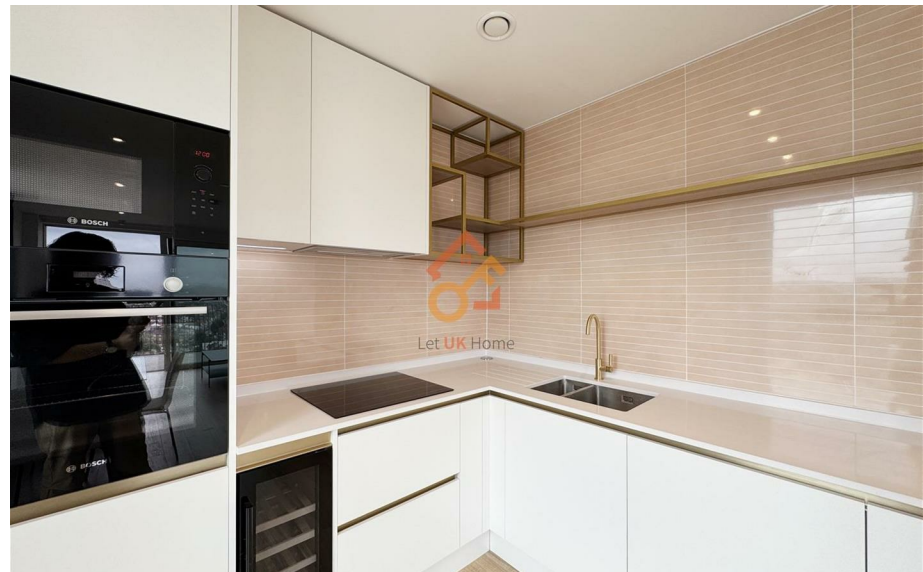
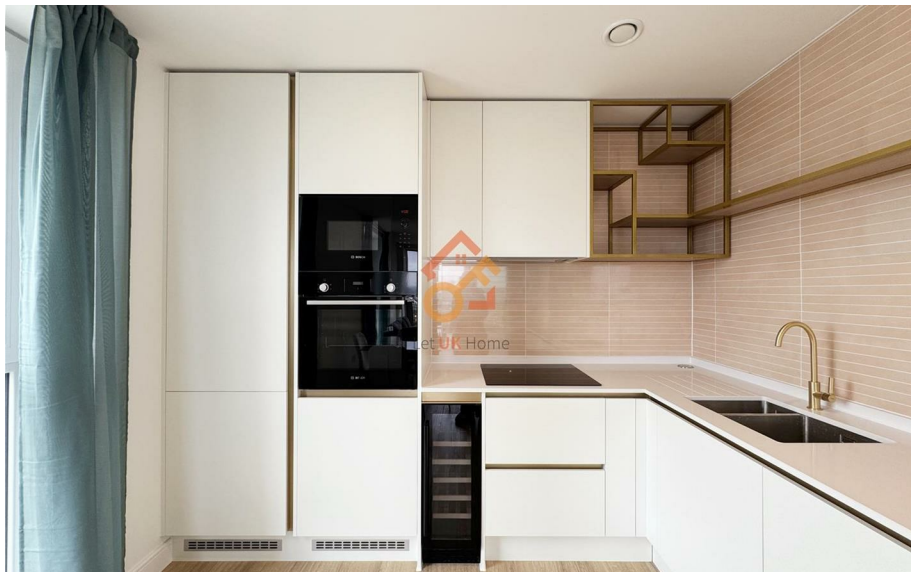
12 Quay Walk Wembley

£2,500 Per Month



- 13th Floor
- 24h Security
- Residents Lounge
- Virtual Viewing Available

- Concierge Service
- The Gym
- Bowling Alley
- EPC Rating: B



Two bedroom home



Let **UK** Home

3F 2 Eastbourne Terrace
 Paddington
 London
 W2 6LG

01795 358 886

info@letukhome.co.uk

Council Tax Band: D

Local Authority:

Agents Note: Whilst every care has been taken to prepare these particulars, they are for guidance purposes only. All measurements are approximate and are for general guidance purposes only and whilst every care has been taken to ensure their accuracy, they should not be relied upon and potential buyers/tenants are advised to recheck the measurements.

Energy Efficiency Rating		Current	Potential
Very energy efficient - lower running costs			
(92 plus) A			
(81-91) B		85	85
(69-80) C			
(55-68) D			
(39-54) E			
(21-38) F			
(1-20) G			
Not energy efficient - higher running costs			
England & Wales	EU Directive 2002/91/EC		

<https://www.letukhome.co.uk/>