



# Southwark Bridge Road

London, SE1

£3,350 per month  
(£773.08 per week)

A stylish two double bedroom, two bathroom apartment set within this popular new development conveniently located for Elephant & Castle transport. This bright airy apartment spans 750 sq. ft and offers stunning views. 24 hr concierge, gym and cinema

**CHESTERTONS**



# Southwark Bridge Road

London, SE1



A stylish two double bedroom, two bathroom apartment set within this popular new development conveniently located for Elephant & Castle transport. This bright airy apartment spans 750 sq. ft and offers stunning views. 24 hr concierge which is also the site of a café/restaurant. On-site amenities include a private gym, residents lounge and screening room.

---

**Minimum Term:** months  
**Deposit Required:** £3,865.38  
**Local Authority:**  
**Council Tax Band:**  
**EPC Rating:** To be confirmed  
**Furnished**

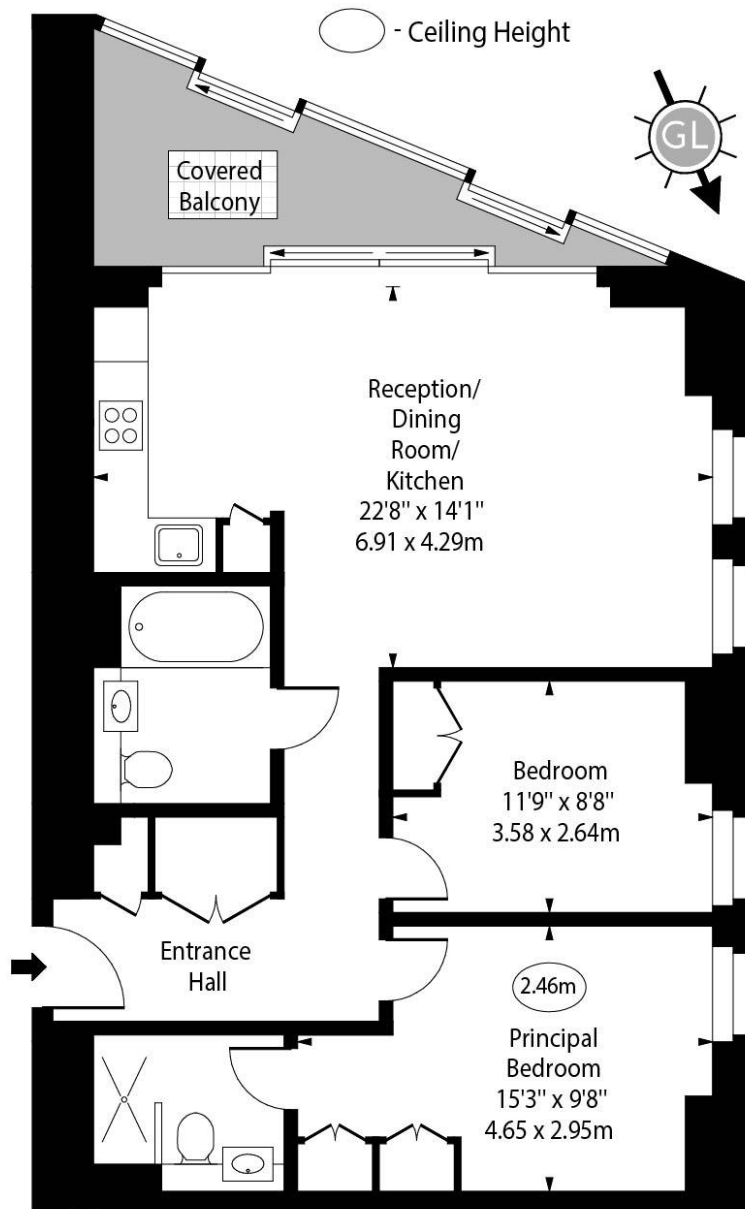
---

### *Chestertons Tower Bridge Lettings*

220 Tower Bridge Road  
Tower Bridge  
London  
SE1 2UP  
towerbridgelettingsusers@chestertons.co.uk  
02073576911  
chestertons.co.uk

Additional tenant charges apply (fees apply to non-AST tenancies only)  
Tenancy Agreement Fee: £300  
References per Tenant/Guarantor: £60  
Inventory check (approx. £100 – £250 inc. VAT)  
[chestertons.co.uk/property-to-rent/applicable-fees](https://www.chestertons.co.uk/property-to-rent/applicable-fees)

# Southwark Bridge Road, SE1



## Thirteenth Floor

Approx Gross Internal Area 754 Sq Ft - 70.05 Sq M  
(Excluding Covered Balcony)

Approx Gross Internal Area 864 Sq Ft - 80.27 Sq M  
(Including Covered Balcony)

For Illustration Purposes Only - Not To Scale

[www.goldlens.co.uk](http://www.goldlens.co.uk)

Ref. No. 021550E

