



45 Stainmore Grove, Harrogate

£198,000 FOR 60% SHARE Leasehold

**VERITY
FREARSON**

**YOUR AWARD
WINNING AGENT**

#DARINGTOBEDIFFERENT



A modern four bedroom semi-detached home, forming part of this popular development on the outskirts of Harrogate and surrounded by attractive open countryside. The property benefits from well presented accommodation arranged over three floors, together with landscaped garden and off-road parking for two vehicles, and is available on a shared ownership basis.

The accommodation includes a spacious sitting room, dining kitchen, four bedrooms, en suite and house bathroom, making it ideally suited to a range of purchasers.



GROUND FLOOR

The property opens into a reception hall with useful downstairs cupboard.

There is a spacious sitting room with glazed doors leading directly onto the garden.

The dining kitchen provides ample space for a dining table and is fitted with a range of stylish modern units, including a gas hob and integrated oven, together with space for additional appliances.

There is also a useful downstairs WC.

FIRST FLOOR

On the first floor there are three good sized bedrooms together with a modern house bathroom fitted with a suite comprising WC, washbasin and bath with shower above.

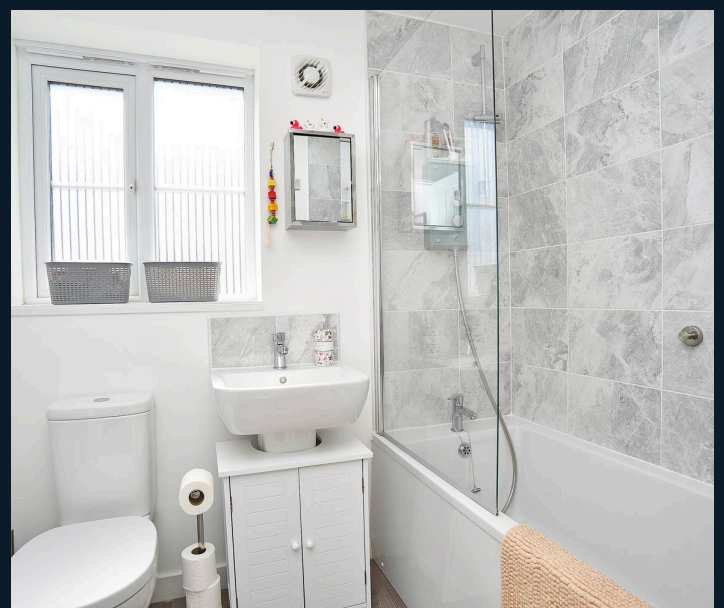
SECOND FLOOR

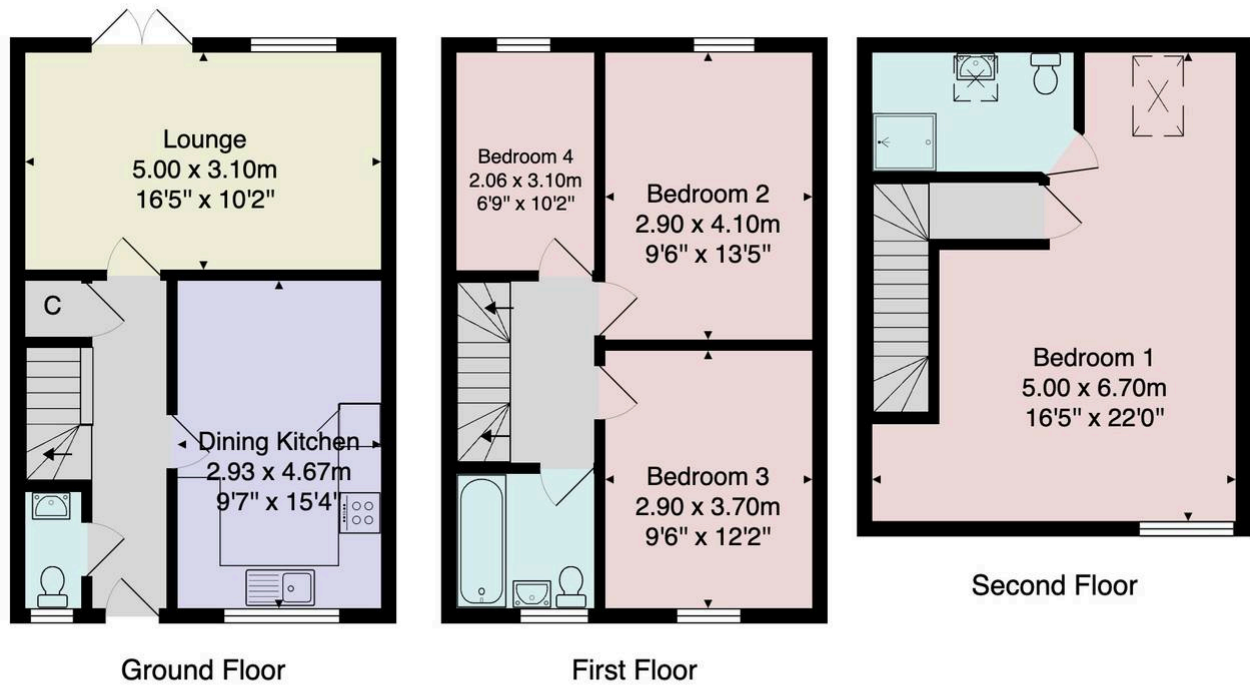
The top floor provides a large double bedroom with a modern en suite shower room.

OUTSIDE

To the rear there is an attractive landscaped garden with artificial lawn and paved sitting area.

The property benefits from off-road parking for two vehicles in tandem.





Total Area: 115.6 m² ... 1245 ft²

All measurements are approximate and for display purposes only.
 No liability is accepted by either the agency or Box Property Solutions Ltd as to the exact measurements of the rooms.
 Box Property Solutions Ltd retains the copyright on this plan and allows agents to use it with agreed permission.

