



£2,100 Per Month

1 Bedroom, Apartment - Retirement

21, Langton Lodge Thorpe Road, Staines-Upon-Thames, Surrey, TW18 3FB

📞 0800 077 8717

✉️ lettings@churchillsl.co.uk

🌐 churchillsl.co.uk

Churchill
Sales & Lettings
Retirement Property Specialists

Langton Lodge

Langton Lodge is an exclusive development of 29 one and two bedroom retirement apartments located in the Egham Hythe area within the popular riverside town of Staines-upon-Thames. With a bustling town centre which includes an array of local shops and eateries, Langton Lodge has everything you need nearby.

The town itself offers an excellent array of shops available on the high street as well as in both the Elmsleigh and Two Rivers Shopping Centres. It is also the perfect location for dining out with its variety of food and drink outlets enhanced by its riverside location.

Benefiting from good transport links, Staines-upon-Thames train station is on a direct line with London Waterloo, Richmond and Windsor. In addition the town has a bus station with connections to many local towns and villages.

The Lodge Manager is on hand throughout the day to support the Owners and keep the development in perfect shape as well as arranging many regular events in the Owners' Lounge from coffee mornings to games afternoons.

A Guest Suite is available for your friends and family to stay in. In addition, you are entitled to use of the Guest Suites at all Churchill Living developments across the country. Prices are available from the Lodge Manager.

Langton Lodge has been designed with safety and security at the forefront. All apartments have an emergency Careline system installed, monitored by the onsite Lodge Manager during the day and 24 hours, 365 days a year by the Careline team. There are integrated intruder alarms, secure video entry systems and sophisticated fire and smoke detection systems throughout both the apartments and communal areas, providing unrivalled peace of mind.

Langton Lodge is managed by the award-winning Churchill Estates Management, working closely with Churchill Living and Churchill Sales & Lettings to maintain the highest standards of maintenance and service for every lodge and owner.

Langton Lodge requires at least one apartment resident to be over the age of 60 with any second resident over the age of 55.



Property Overview

** Service Charges are included in the rent - No Ground Rent to pay **

Rent a BRAND NEW Churchill Living retirement apartment in Staines-Upon-Thames. Built by the award-winning Churchill Living, this stunning one bedroom BRAND NEW apartment is available to rent, on a long term basis, in this sought after development Langton Lodge.

Priced at £2,100, call today to book your appointment to view.

Photographs, images, and computer-generated visuals are indicative only and are potentially not of the specific property. They are intended to provide a general impression of the development or style and should not be relied upon as statements of fact.



Features

- ** Service Charges and Ground Rent are included in the rent **
- Modern fitted kitchen with integrated appliances
- Owners' Lounge & coffee bar with regular social events
- Lodge Manager available 5 days a week
- 24 hour Careline system for safety and security
- Lift to all floors
- Beautifully landscaped garden
- Owners' private car park
- Guest Suite available for your friends and family to stay in
- Buggy store with charging points



Key Information

OVER 60's RETIREMENT APARTMENT

LONG TERM TENANCY

Please check regarding Pets with Churchill Estates Management. Any consents given in relation to pets are subject to the terms of the lease and any further rules and regulations made by Churchill Estates Management.

Service charges include:

Careline system, buildings insurance, water and sewerage rates, communal cleaning, utilities and maintenance, garden maintenance, lift maintenance, lodge manager and a contribution to the contingency fund.

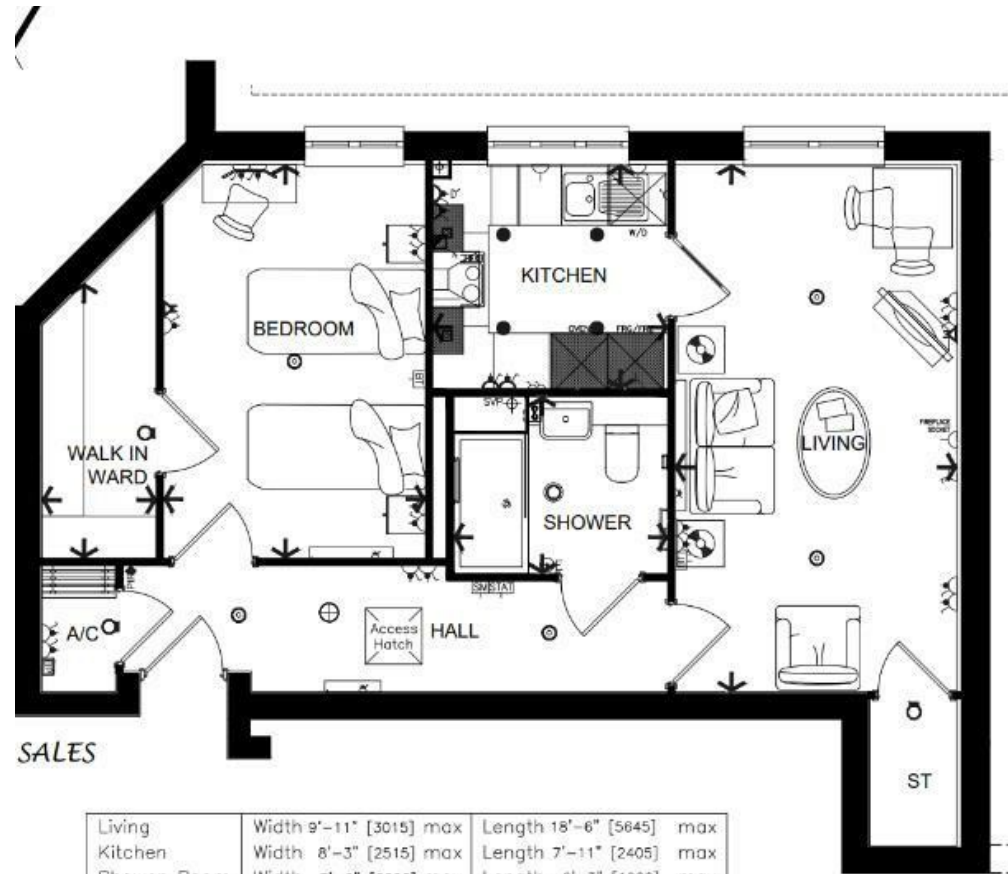
Security Deposit:

A security deposit equal to 5 week's rent will be payable at the start of the tenancy. This covers damages or defaults on the part of the tenant during the tenancy. It will be reimbursed at the end of the tenancy subject to the details of the agreement and the findings of the inventory check out report.

Holding Deposit:

A holding deposit equal to 1 week's rent will be payable on acceptance of an application. This will be held and used towards the first month's rent.

Please note: The holding deposit will be withheld if the applicant(s) or any relevant person (including any guarantor(s)) withdraw from the tenancy, fail a Right-to-Rent check, provide materially significant false or misleading information, or fail to sign their tenancy agreement (and/or Deed of Guarantee) within 30 days (or other deadline as mutually agreed in writing).



Living	Width 9'-11" [3015] max	Length 18'-6" [5645] max
Kitchen	Width 8'-3" [2515] max	Length 7'-11" [2405] max
Shower Room	Width 7'-6" [2290] max	Length 6'-3" [1900] max
Bedroom	Width 9'-2" [2800] max	Length 13'-10" [4215] max
Walk in Ward	Width 4'-0" [1225] max	Length 9'-8" [2945] max
← 7'-8" [2325]		→ Arrows denote measurement distances
<small>Although every effort has been made to ensure accuracy, exact room dimensions may vary during the course of construction and no responsibility can be accepted for any mis-statement on this leaflet, which is not a contract nor forms any part of any contract. The company also reserves the right to alter specification without notice.</small>		

EPC Rating:

DESCRIPTION Measurements are approximate and some may be maximum on irregular walls.

CONSENTS We have not had sight of any relevant building regulations, guarantees or planning consents all relevant documentation pertaining to this property should be checked with your legal advisor before exchanging contracts.

Property Particulars Disclaimer: These particulars are intended only as general guidance. The Company therefore gives notice that none of the material issued or visual depictions of any kind made on behalf of the Company can be relied upon as accurately describing any of the Specified Matters prescribed by any Order made under the Consumer Protection from Unfair Trading Regulations, 2008. Nor do they constitute a contract, part of a contract or a warranty.



📞 0800 077 8717

✉️ lettings@churchillsl.co.uk 🌐 churchillsl.co.uk

Churchill
Sales & Lettings
Retirement Property Specialists