



36 Northfields Lane, Brixham, TQ5 8RS
Freehold Bungalow - Semi Detached
£325,000

boycebrixham
email property@ljboyce.co.uk call 01803 852736

Northfields Lane, Brixham – Versatile 3-Bedroom Dormer Bungalow on a Generous Plot

Tucked away along a quieter stretch of Northfields Lane, this well-presented and highly versatile three-bedroom dormer bungalow enjoys a generous plot and an enviable position within easy reach of Brixham's harbour and town centre.

Approached via a gated entrance, a gently winding path leads through a pretty lawned front garden, enjoying a lovely open southerly aspect, setting an inviting tone on arrival. Inside, a welcoming entrance hall provides access to the main ground floor accommodation.

The dual-aspect kitchen/dining room is both light and spacious, offering ample worktop and storage space, with a pleasant outlook over the rear garden. The dining area is centred around a charming log burner, creating a warm and sociable heart to the home. The lounge provides a calm and comfortable retreat, elevated to take in far-reaching views across Brixham towards Southdown Avenue.

Flexibility is a key feature here, with two additional ground floor rooms offering a range of uses – ideal as bedrooms, home office space, or further reception rooms depending on individual needs.

Upstairs, the impressive principal bedroom is generously proportioned, benefitting from useful eaves storage and an elevated outlook over the rear garden.

Externally, the property truly excels. The rear garden is a standout feature – a sunny and well-established space, mainly laid to lawn with a lower patio seating area, colourful planted borders, and a productive garden area complete with greenhouse. To the rear, a substantial car port provides excellent covered storage and sits alongside a double driveway, offering off-road parking for two large vehicles, accessed via a charming rear lane.

Further benefits include gas central heating and a high standard of presentation throughout. A superb home offering space, flexibility, and lifestyle appeal in a sought-after Brixham location.

Early viewing is highly recommended.

Council Tax Band: C



- Versatile 3-Bed Dormer
- Very Sunny Garden w/ Open Views
- Double Parking + Large Carport

- Great Central Location
- Well Presented Throughout
- Freehold / Council Tax Band C

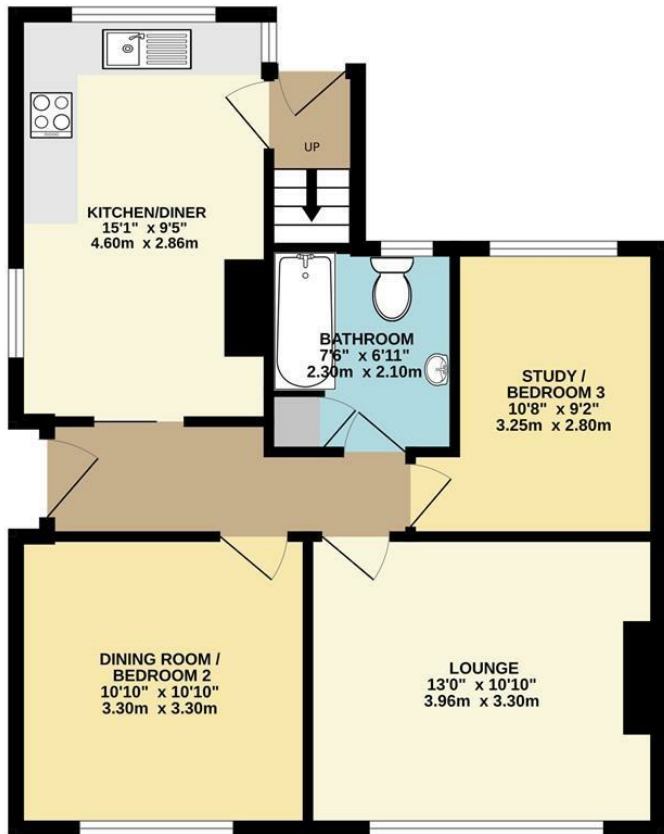


boycebrixham
email property@ljboyce.co.uk call 01803 852736

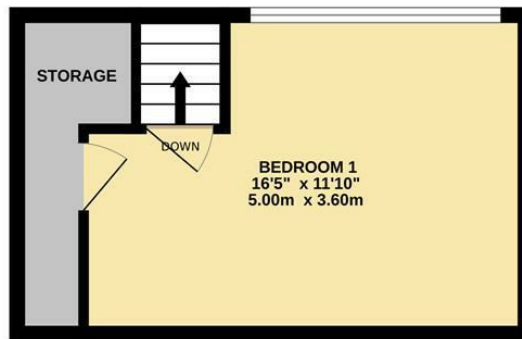


boycebrixham
email property@ljboyce.co.uk call 01803 852736

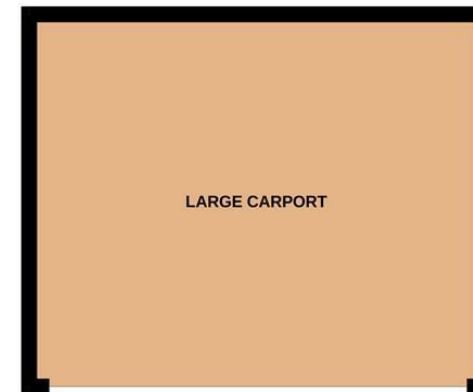
GROUND FLOOR
601 sq.ft. (55.8 sq.m.) approx.



1ST FLOOR
223 sq.ft. (20.7 sq.m.) approx.



OUTSIDE
233 sq.ft. (21.7 sq.m.) approx.



TOTAL FLOOR AREA : 1057 sq.ft. (98.2 sq.m.) approx.

Whilst every attempt has been made to ensure the accuracy of the floorplan contained here, measurements of doors, windows, rooms and any other items are approximate and no responsibility is taken for any error, omission or mis-statement. This plan is for illustrative purposes only and should be used as such by any prospective purchaser. The services, systems and appliances shown have not been tested and no guarantee as to their operability or efficiency can be given.
Made with Metropix ©2026

Current EPC Rating:

Energy Efficiency Rating		Current	Potential
Most energy efficient - lower running costs			
(91-100) A			
(81-90) B			
(69-80) C			
(55-68) D			
(49-54) E			
(39-48) F			
(1-38) G			
Not energy efficient - higher running costs			
England & Wales		EU Directive 2002/91/EC	

Find us on



Please note floorplans are to be used as a guide only. The Agent has not tested any apparatus, equipment, fixtures and fittings or services and so cannot verify that they are in working order or fit for purpose. A buyer is advised to obtain verification from their solicitor or surveyor. References to the tenure of the property are based on information supplied by the seller. The agent has not had sight of the title documents. A buyer is advised to obtain verification from their solicitor. You are advised to check the availability of this property before travelling distance to view.

boycebrixham

email property@ljboyce.co.uk call 01803 852736