

Frank Harris & Co.



Gordon Mansions, Torrington Place, WC1E

£1,350,000

Introducing to the market this spacious four bedroom lateral apartment is situated on the sixth floor of one of Bloomsbury's finest Edwardian mansion blocks. Retaining many of its original period features such as high ceilings, cornicing and large windows, the building also boasts a most attractive facade. The apartment further benefits from a dual aspect, allowing for plenty of natural light. This lovely property would be an ideal pied-à-terre or family home



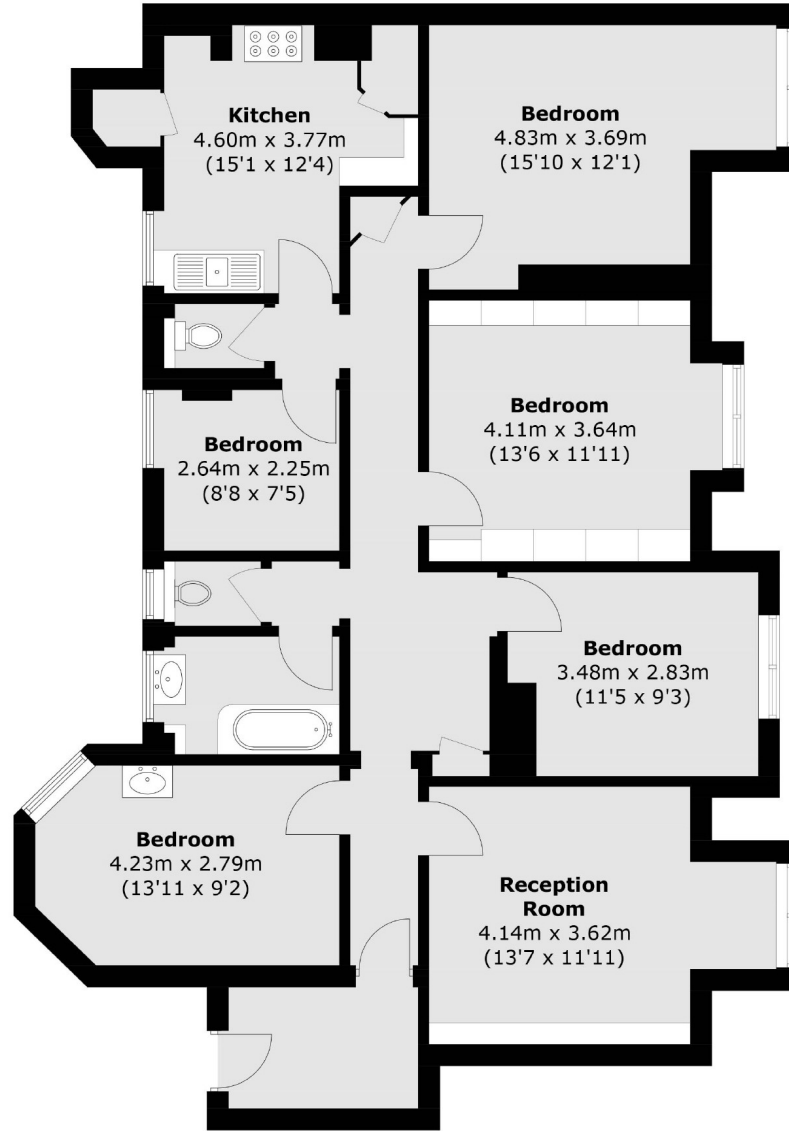
Spanning close to 1,300 sqft, this lovely apartment comprises of four double bedrooms, a family bathroom and separate W/C, a utility room, a beautiful west facing reception room and a separate kitchen/dining room.

Torrington Place is within walking distance from the West End and is well served by numerous transport links, such as Goodge Street, Warren Street, Euston Square and Russell Square Stations. Located very near to Tottenham Court Road, there are a wide variety of amenities close at hand, and plenty of green spaces such as Gordon Square and Russell Square.

- Excellent lateral space • Top Floor • West Facing •
- Dual aspect • Lift • Central location •



Frank Harris & Co.



Total area (approx.): 119.1 sq. m (1,282.0 sq. ft)

Frank Harris & Co. Bloomsbury and Kings Cross

81 Marchmont Street,

London, WC1N 1AL

020 7405 4444

bloomsburysales@frankharris.co.uk

Energy Rating: E. We aim to make our particulars both accurate and reliable. However they are not guaranteed; nor do they form part of an offer or contract. If you require clarification on any points then please contact us, especially if you're traveling some distance to view. Please note that appliances and heating systems have not been tested and therefore no warranties can be given as to their good working order.

