



BRONDESBURY PARK, NW6

£3,750 per month

- Top floor
- Split level
- Off-street parking
- Communal gardens
- Gated access
- Local transport links

@marshandparsons
marshandparsons.co.uk

MARSH &
PARSONS



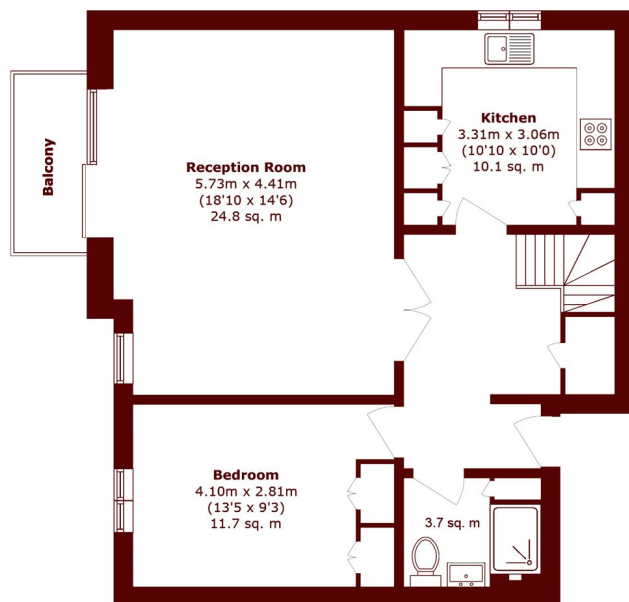
ABOUT THE PROPERTY

A three double bedrooms apartment in a desirable and secure purpose-built development. Arranged over two floors, this top floor property has two bathrooms, a separate kitchen and access to communal gardens.

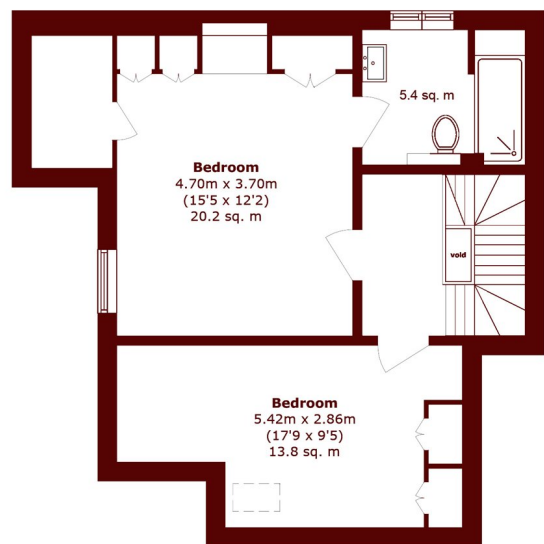
Brondesbury Park is a tree-lined residential street with access to the shops, cafes, bars and restaurants in Queen's Park. Transport links include Queen's Park, Willesden Green and Brondesbury Park and multiple bus routes.



STEP INSIDE BRONDESBURY PARK



Second Floor



Third Floor

Total area (approx.): 111.8 sq. m (1203.4 sq. ft)
Balcony area (approx.): 3.2 sq. m (34.4 sq. ft)
(Excluding void)

Queen's Park
020 7871 5050

Energy Rating: C We aim to make our particulars both accurate and reliable. However, they are not guaranteed; nor do they form part of an offer or contract. If you require clarification on any points then please contact us, especially if you're traveling some distance to view. Please note that appliances and heating systems have not been tested and therefore no warranties can be given as to their good working order

MARSH &
PARSONS