



Ferry Street

London, E14

Asking Price £1,100,000

Stunningly set within a private gated estate, this handsome 4 bedroom modern Townhouse offers four floors of bright and spacious interiors, and an abundance of outside space, views of the River Thames and private off-street parking.

CHESTERTONS



Ferry Street

London, E14

- Freehold Townhouse
- Four Bedrooms | Two Bathrooms
- 1,772sq ft of Internal Living Space
- Fantastic Outside Space
- East-Facing River Thames Views
- Excellent Riverside Location
- Private Off-Street Parking
- Sold Chain Free



This handsome end of terrace townhouse is full of charm and character and spans over 1750sqft (including garage), a private terrace and balcony. The accommodation comprises of four bedrooms, two bathrooms, a separate fitted kitchen, two reception rooms, a handy separate utility room and guest W/C. Both reception rooms have direct access on to their own private outside space, with a balcony on the first floor and a large roof terrace on up on the third. Both areas offer fantastic south-facing views over the communal gardens towards the River Thames, the Cutty Sark and the Greenwich Old Naval College. The property also has its own front garden and offers a complete serene setting, whilst located moments away from the greens of Mudchute Park and Farm.

The DLR connections of Island Gardens and Mudchute are within a few hundred metres walk, and the house is also located within the catchment area for Canary Wharf College. Ideally located close to the River Taxi and the Greenwich Foot Tunnel.

Tenure: Freehold

Service Charge: N/A

Ground Rent: N/A

Local Authority: Tower Hamlets

Council Tax Band: F

Chestertons Canary Wharf & Greenwich Sales

Harbour Island

28 Harbour Exchange Square

London

E14 9GE

canarywharf@chestertons.co.uk

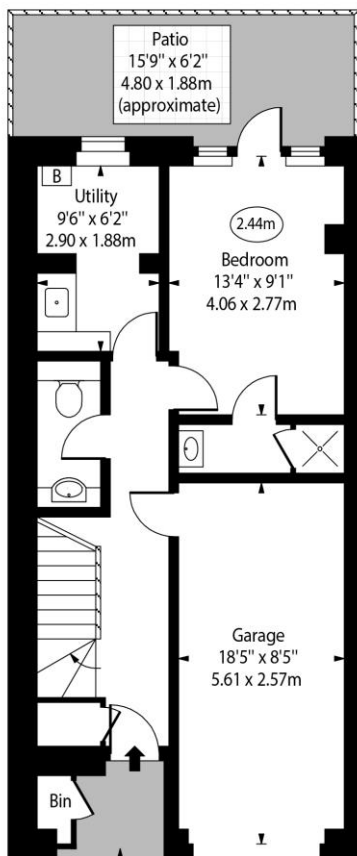
020 7510 8300

chestertons.co.uk

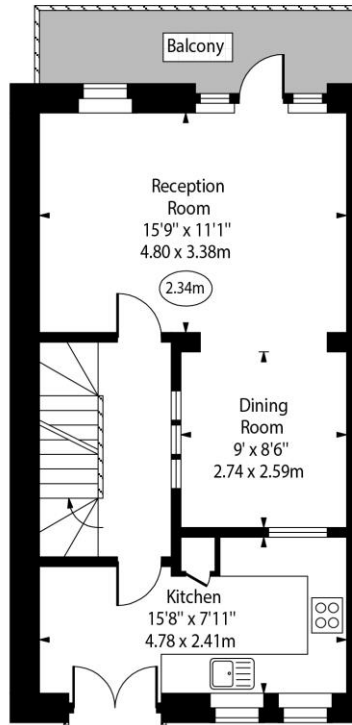
Ferry Street, E14



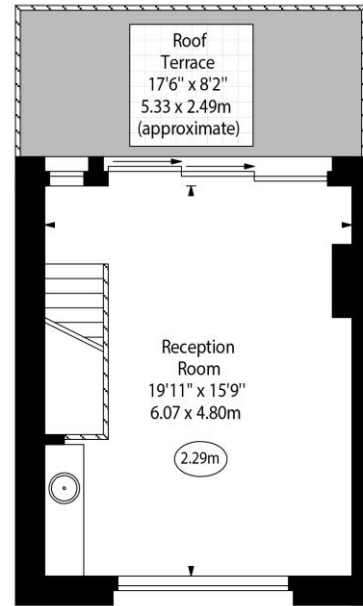
○ - Ceiling Height



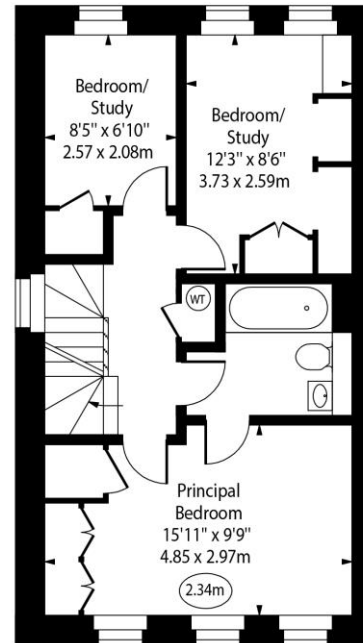
Ground Floor



First Floor



Third Floor



Second Floor

Approx Gross Internal Area 1772 Sq Ft - 164.62 Sq M

(Including Garage)

Every attempt has been made to ensure the accuracy of the floor plan shown. However, all measurements, fixtures, fittings, and data shown are approximate interpretations and for illustrative purposes only. Measured according to the RICS. Not To Scale.

www.goldlens.co.uk

Ref. No. 030080K

