

# Woodlea Grove

Northwood • • HA6 2DW

PCM: £1,800 PCM



coop  
est 1986

A spacious and well-presented ground floor apartment ideally located for Northwood Town Centre, Metropolitan Line Station, Mount Vernon Hospital, and the Northwood NATO Headquarters.

The property offers two large double bedrooms, a bright rear-facing lounge with doors leading to a conservatory, a modern fitted kitchen with utility area, and a family bathroom.

Further benefits include well-maintained communal gardens, residents' parking, and a garage in a nearby block.

Woodlea Grove is a desirable residential location just off Rickmansworth Road, providing easy access to local shops, restaurants, schools, and transport links.

Ground floor apartment

Two bedrooms

Modern bathroom

Large lounge with space for dining

Walking distance to Northwood HQ

Communal gardens and residents parking

Close to Northwood Station

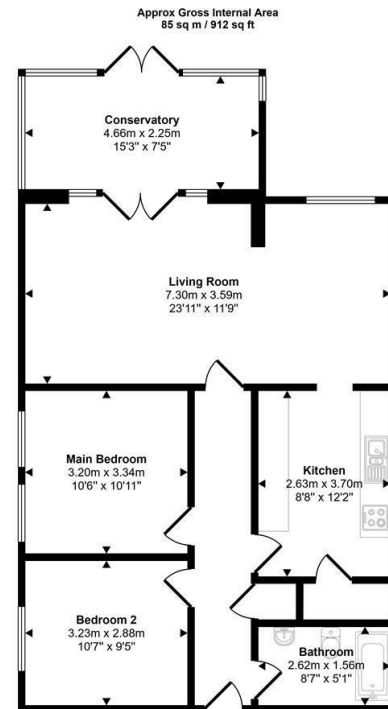
Rear facing conservatory

Unfurnished

Available in January

**Available Date**

23rd January 2026



Floorplan

This floorplan is only for illustrative purposes and is not to scale. Measurements of rooms, doors, windows, and any items are approximate and no responsibility is taken for any error, omission or mis-statement. Icons of items such as bathroom suites are representations only and may not look like the real items. Made with Made Snappy 360.



**coopers**  
est 1986

**0208 017 6000**

**18 Bridge Street, Pinner,  
Middlesex, HA5 3JF**

[pinner@coopersresidential.co.uk](mailto:pinner@coopersresidential.co.uk)

**CoopersResidential.co.uk**

Energy Efficiency Rating		Current	Potential
Very energy efficient - lower running costs			
A			
B			
C			
D			
E			
F			
G			
Not energy efficient - higher running costs			
England & Wales		EU Directive 2002/91/EC	

Environmental Impact (CO <sub>2</sub> ) Rating		Current	Potential
Very environmentally friendly - lower CO <sub>2</sub> emissions			
A			
B			
C			
D			
E			
F			
G			
Not environmentally friendly - higher CO <sub>2</sub> emissions			
England & Wales		EU Directive 2002/91/EC	

Important Notice: These particulars, whilst believed to be accurate are set out as a general outline only for guidance and do not constitute any part of an offer or contract. Intending purchasers should not rely on them as statements or representation of fact, but must satisfy themselves by inspection or otherwise has the authority to make or give any representation or warranty in respect of the property.