



Flat 5 Somerlea, Court Road, Maidenhead SL6 8LH

welcome to

Flat 5 Somerlea, Court Road, Maidenhead

Views of the River Thames can be appreciated from the balcony of this characterful two bedroom first floor apartment situated in the popular Somerlea building on Court Road. This home further benefits from having generous private storage including a large loft space and private exterior sheds, a share of the freehold, its own parking and mooring rights!

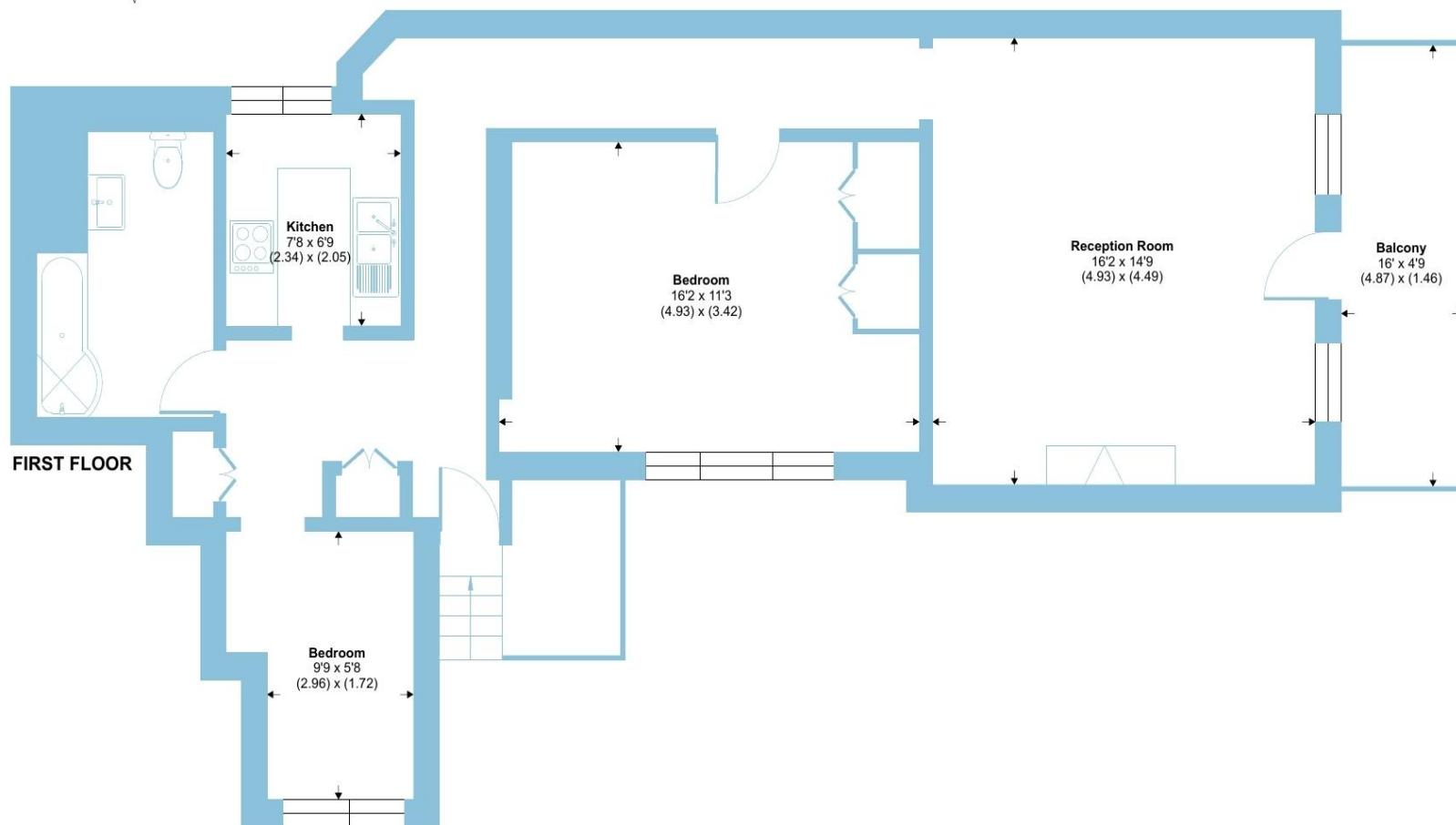




Court Road, Maidenhead, SL6

Approximate Area = 807 sq ft / 74.9 sq m

For identification only - Not to scale



Floor plan produced in accordance with RICS Property Measurement 2nd Edition, incorporating International Property Measurement Standards (IPMS2 Residential). © nchecon 2026. Produced for Barnard Marcus. REF: 1416927



Located in the highly desirable riverside area of Maidenhead, Somerlea is a beautifully positioned two-bedroom apartment set within well-maintained communal grounds enjoying stunning views over the River Thames with its own mooring rights.

This well-presented apartment offers bright and spacious accommodation throughout, perfectly designed to make the most of its enviable riverside setting. The generous open plan living area is saturated with natural light from the large windows framing uninterrupted views across the water - an ideal space for both relaxing and entertaining. The separate kitchen is thoughtfully laid out with ample storage and workspace.

Both bedrooms are doubles, offering comfortable accommodation and flexibility for guests, a home office, or additional storage. The property is complemented by a modern bathroom and has generous private storage including a large loft space and private exterior sheds and there are well-maintained communal areas.

Somerlea enjoys a peaceful yet convenient location, just a short distance from Maidenhead town centre, excellent transport links including the Elizabeth Line, and scenic riverside walks. Residents benefit from attractive surroundings and the lifestyle that comes with waterside living.

An exceptional opportunity to acquire a charming riverside home in one of Maidenhead's most sought-after settings, ideal for professionals, downsizers, or those seeking a tranquil retreat with easy access to local amenities.

welcome to

Flat 5 Somerlea, Court Road

- SHARE OF FREEHOLD
- ENVIABLE RIVERSIDE SETTING
- PEACEFUL YET CONVENIENT LOCATION
- WELL-MAINTAINED COMMUNAL GROUNDS
- GENEROUS PRIVATE STORAGE INCLUDING A LARGE LOFT SPACE AND PRIVATE EXTERIOR SHEDS
- TWO DOUBLE BEDROOMS
- KITCHEN WITH AMPLE STORAGE & WORKSPACE
- ALLOCATED PARKING, MOORING RIGHTS

Tenure: Leasehold EPC Rating: C

Council Tax Band: E Service Charge: 3197.04

Ground Rent: Ask Agent

This is a Leasehold property with details as follows; Term of Lease 999 years from 24 Jun 2020. Should you require further information please contact the branch. Please Note additional fees could be incurred for items such as Leasehold packs.

offers in excess of

£475,000



Please note the marker reflects the postcode not the actual property

view this property online rogerplatt.co.uk/Property/MHD123610



Property Ref:
MHD123610 - 0006

1. MONEY LAUNDERING REGULATIONS Intending purchasers will be asked to produce identification documentation at a later stage and we would ask for your co-operation in order that there is no delay in agreeing the sale. 2. These particulars do not constitute part or all of an offer or contract. 3. The measurements indicated are supplied for guidance only and as such must be considered incorrect. Potential buyers are advised to recheck measurements before committing to any expense. 4. We have not tested any apparatus, equipment, fixtures or services and it is in the buyers interest to check the working condition of any appliances. 5. Where an EPC, or a Home Report (Scotland only) is held for this property, it is available for inspection at the branch by appointment. If you require a printed version of a Home Report, you will need to pay a reasonable production charge reflecting printing and other costs. 6. We are not able to offer an opinion either written or verbal on the content of these reports and this must be obtained from your legal representative. 7. Whilst we take care in preparing these reports, a buyer should ensure that his/her legal representative confirms as soon as possible all matters relating to title including the extent and boundaries of the property and other important matters before exchange of contracts.

Roger Platt is a trading name of Sequence (UK) Limited which is registered in England and Wales under company number 4268443, Registered Office is Cumbria House, 16-20 Hockliffe Street, Leighton Buzzard, Bedfordshire, LU7 1GN. VAT Registration Number is 500 2481 05.


roger platt



01628 773333



Maidenhead@rogerplatt.co.uk



25-29 Queen Street, MAIDENHEAD, Berkshire,
SL6 1NB



rogerplatt.co.uk