



jordanfishwick

Hawthorne House

£1,200 PCM



Hawthorne House, Wilmslow, SK9 5HJ

£1,200 PCM

FURNISHED AVAILABLE MID FEBRUARY -
VIEWING RECOMMENDED

This contemporary and well proportioned first floor apartment is set within the heart of Wilmslow village just a stones throw from local shops, fashionable restaurants and the train station.

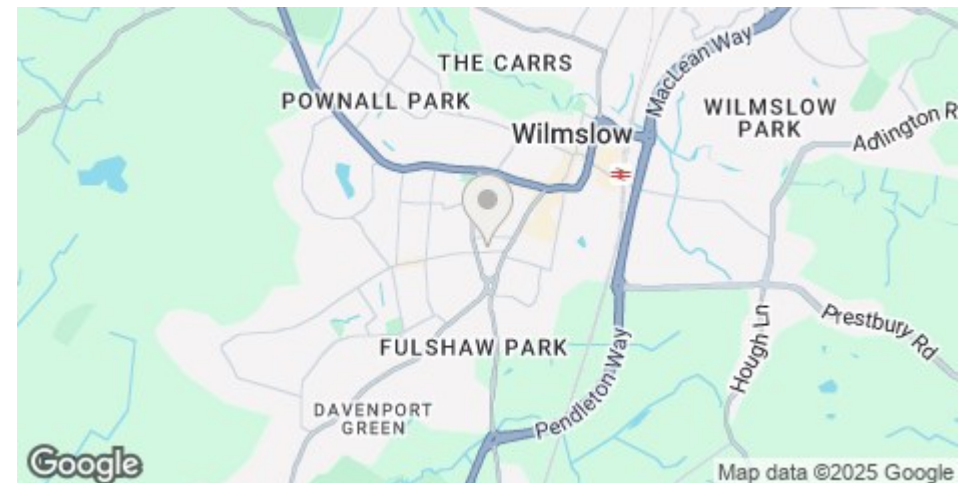
The attractive accommodation can be accessed via lift or stairs and comprises in brief: Private entrance hallway, open plan living room and kitchen/diner area with integrated appliances, double bedroom and a modern bathroom suite.

The apartment benefits from an allocated parking space set behind electric gates. A wonderful property in an enviable location.

Contact Wilmslow 01625 536300 £1200.00 pcm

COUNCIL TAX C

EPC B



- CENTRAL LOCATION
- GATED DEVELOPMENT
- SPACIOUS INTERIOR
- IMMACULATE THROUGHOUT
- COUNCIL TAX C
- EPC B
- VIEWING ESSENTIAL

Postcode - SK9 5HJ

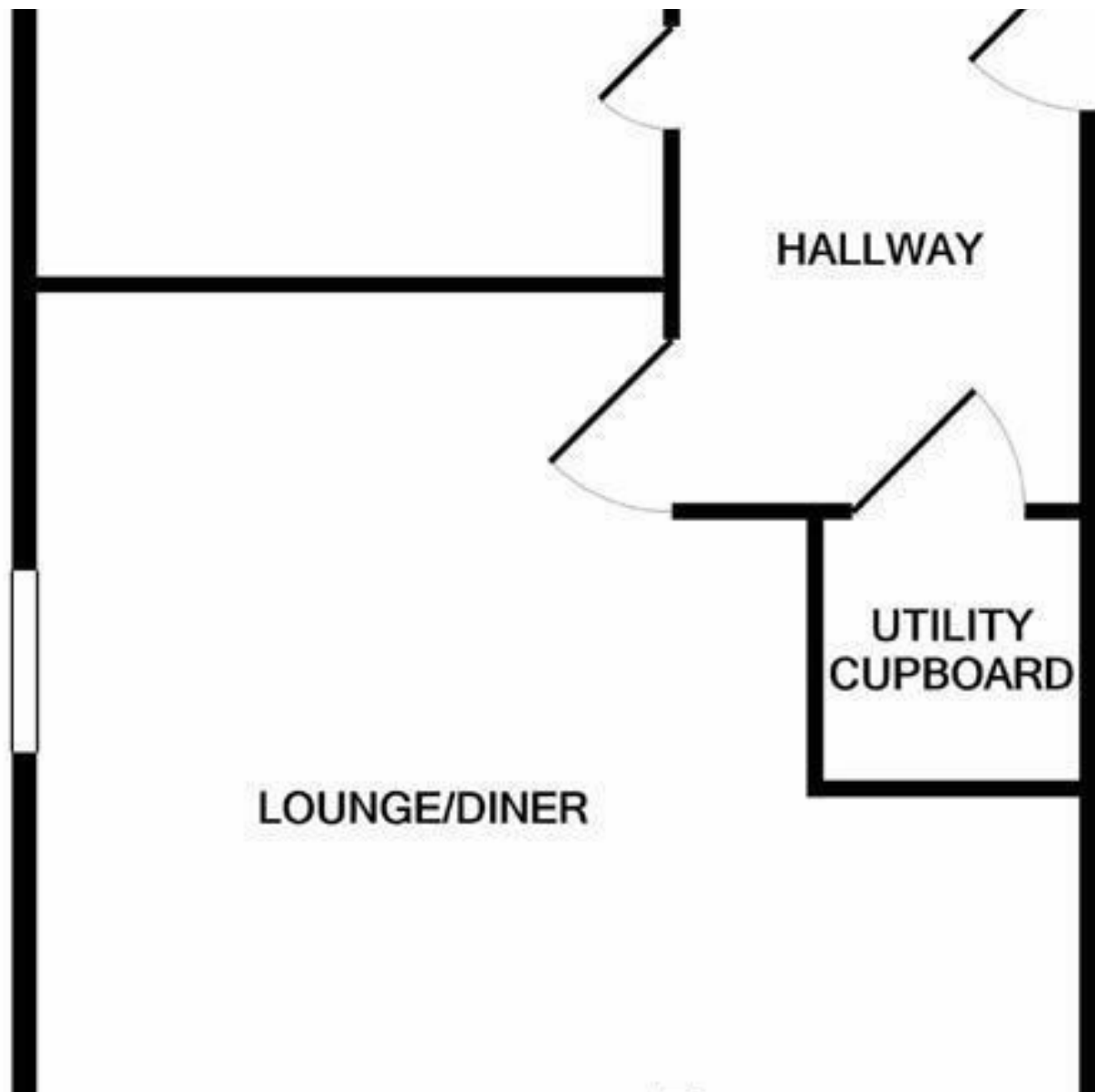
EPC Rating - B

Floor Area - sq ft

Local Authority - Cheshire East Council

Council Tax - C





These particulars are believed to be accurate but they are not guaranteed and do not form a contract. Neither Jordan Fishwick nor the vendor or lessor accept any responsibility in respect of these particulars, which are not intended to be statements or representations of fact and any intending purchaser or lessee must satisfy himself by inspection or otherwise as to the correctness of each of the statements contained in these particulars. Any floorplans on this brochure are for illustrative purposes only and are not necessarily to scale.

Offices at: Offices at Chorlton, Didsbury, Disley, Hale, Glossop, Macclesfield, Manchester Deansgate, Manchester Whitworth Street, New Mills, Sale, Wilmslow and Withington

01625 536300