



## Sinclair Road, W14

£2,750 Per calendar month

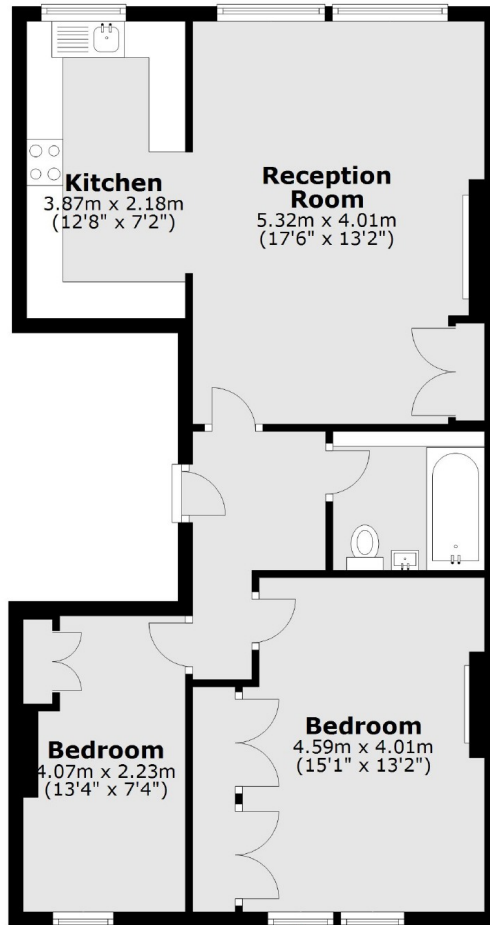
A tasteful, recently refurbished two double bedroom apartment on the first floor of a Victorian Conversion. The property benefits from high ceiling, large windows and a lot of natural light throughout.

Sinclair Road is a popular street in the Royal Borough of Kensington and Chelsea and is conveniently located between Kensington Olympia, Kensington High Street and Shepherds Bush.

### Features

Two Bedroom  
First Floor Victorian Conversion  
Open Plan Kitchen  
Contemporary Spec  
Integrated Appliances  
Kensington Olympia

Sinclair Road,  
London, W14



Total area: approx. 67.9 sq. metres (730.8 sq. feet)