

abbotFox

ALDWYCH HOUSE

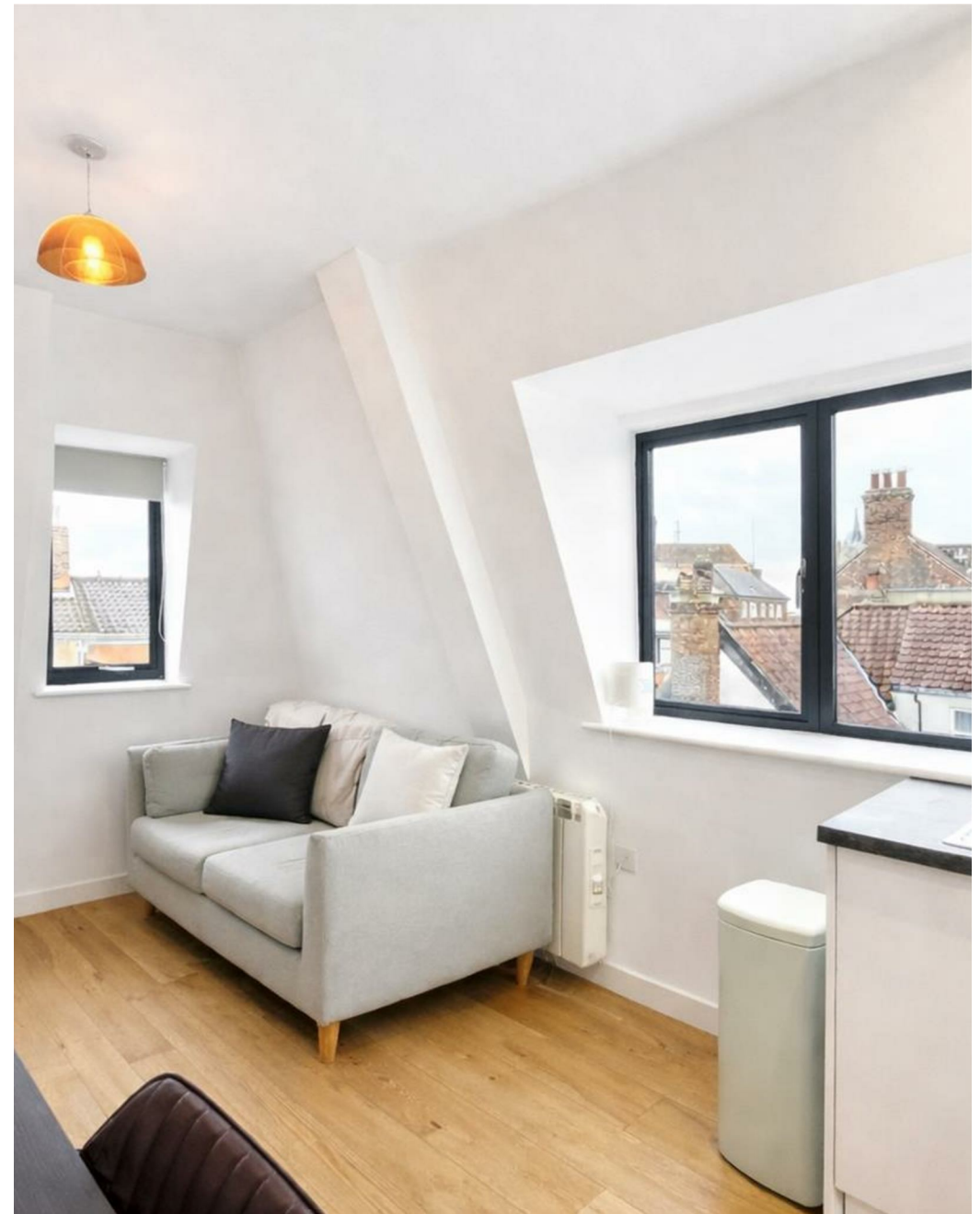
LUXURY  
APARTMENTS  
FOR SALE

City Centre, NR2  
*Offers In Excess Of £130,000*

“

We are a team of genuine individuals who hold a deep passion for both property and marketing. Collectively, we bring over 70 years of experience in the property market of Norfolk and Suffolk. Our affection for both counties runs deep, and we are enthusiastic about sharing our passion with you.

Colin McKenzie | **Branch Partner**







## THE DETAIL \_\_\_\_\_

abbotFox presents this stylish top floor apartment, ideally positioned within the sought after Aldwych House, offering an exceptional opportunity for any buyer looking to enjoy the convenience of City living.

Occupying an elevated position, the property enjoys a wonderful sense of privacy and an abundance of natural light throughout. The heart of the home is a well-proportioned open plan living space, perfectly designed for modern living, seamlessly blending relaxation and entertaining. The adjoining kitchen is thoughtfully arranged with a range of fitted units and integrated appliances, delivering both functionality and contemporary appeal. The accommodation is completed with a double bedroom, and a stylish modern shower room.

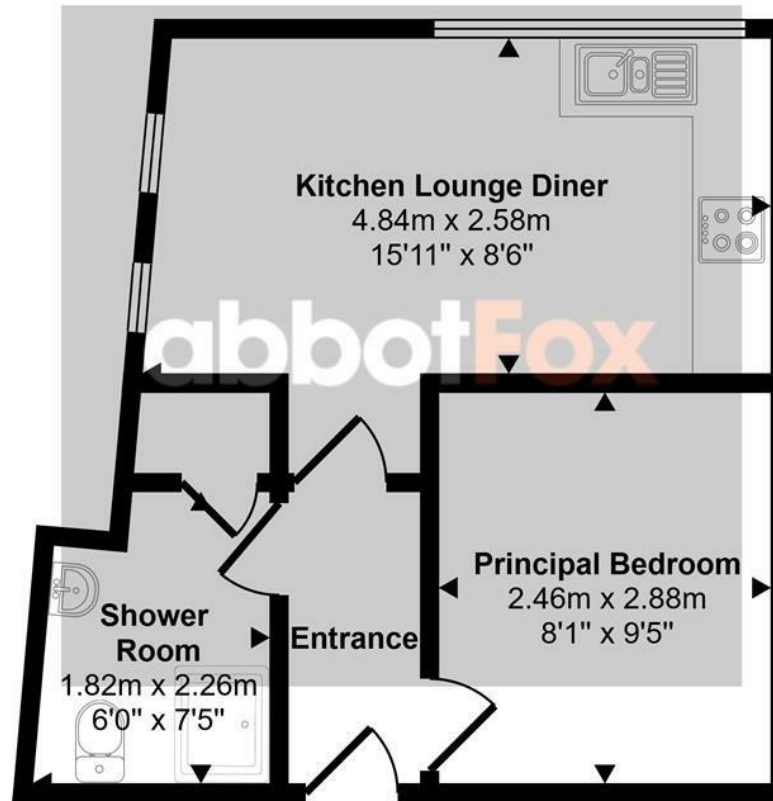
Externally, the development is well maintained, with secure entry providing peace of mind. Residents also benefit from the convenience of city centre living, with a wealth of amenities, transport links, and leisure facilities just moments away. An internal viewing comes highly recommended.



## THE HIGHLIGHTS \_\_\_\_\_

- Top floor apartment
- One double bedroom
- Open plan living accommodation
- Convenient City Centre location
- Ideal first time buy or investment opportunity
- Viewing advised

Approx Gross Internal Area  
28 sq m / 305 sq ft



Floorplan

This floorplan is only for illustrative purposes and is not to scale. Measurements of rooms, doors, windows, and any items are approximate and no responsibility is taken for any error, omission or mis-statement. Icons of items such as bathroom suites are representations only and may not look like the real items. Made with Made Snappy 360.

*Let's talk*

01603 660000

sales@abbotfox.co.uk

@abbotfox

EPC RATING -

Disclaimer – In accordance with the Property Misdescriptions Act, the company abbotFox gives notice that all descriptions, references to condition, necessary permissions for use and other details are given in good faith and believed to be correct, but any purchaser should not rely on them as statements of fact, and must satisfy themselves by inspection or other means, as to their accuracy.