

## Pembridge Gardens, W2

### £840,000

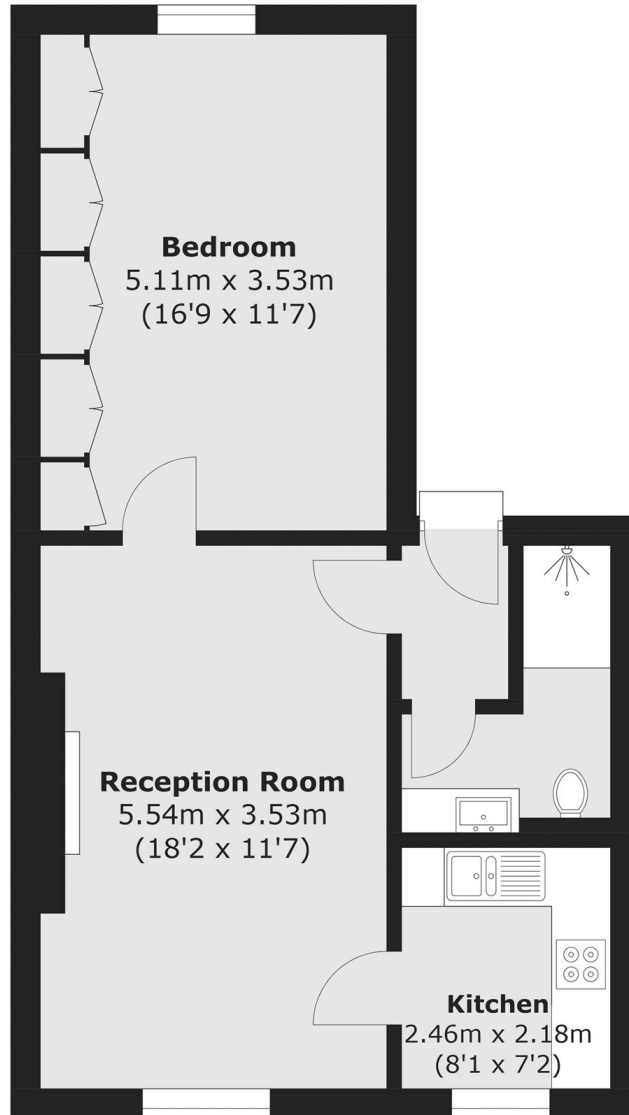
A newly renovated one bedroom apartment located in the heart of Notting Hill. The apartment is incredibly spacious and offers high ceilings, a fully integrated separate kitchen, and custom built-in wardrobes in the bedroom providing plenty of storage.

Pembridge Gardens is in a highly sought after location in Notting Hill, with convenient access to Notting Hill Gate Underground and a wealth of local shops, pubs and restaurants. Hyde Park and fashionable Portobello Road are also within walking distance as well.

### Features

- One Double Bedroom
- High Ceilings
- Second Floor
- Separate Kitchen
- Newly Renovated
- Notting Hill

# Pembridge Gardens, London, W2



Total area (approx.): 50.6 sq. m (544.3 sq. ft)