



15 Pantheon Drive, Houghton Regis, Dunstable, LU5 6GW

A beautifully presented, high-specification four bedroom townhouse, situated within the sought after and growing Thorn development on the northern edge of Dunstable.

The ground floor offers a welcoming entrance hall complete with under stairs storage, a fully integrated kitchen/dining room, a convenient cloakroom and a spacious lounge with patio doors opening onto a low maintenance rear garden with a patio area and shed.

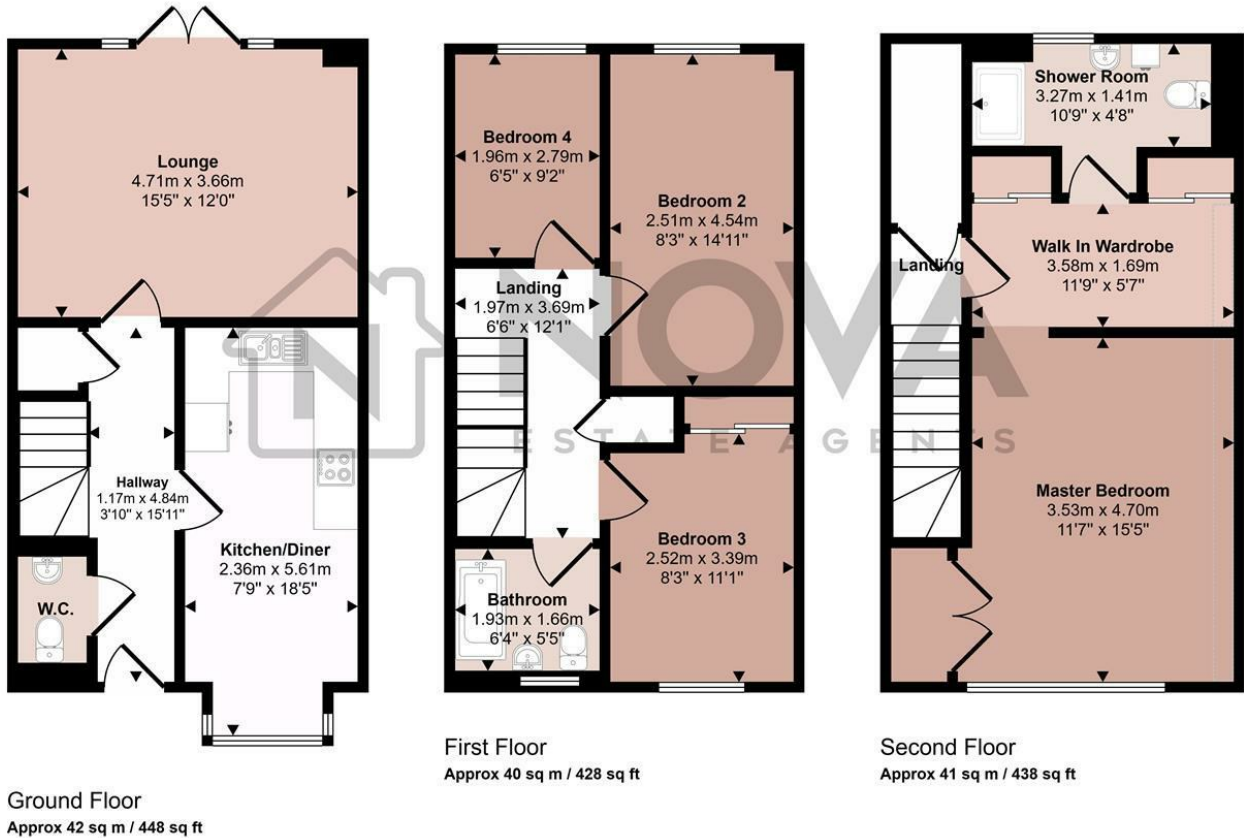
On the first floor are two well proportioned double bedrooms, a generous single bedroom currently used as a home office and a modern family bathroom. Stairs lead to the impressive second floor principal bedroom, featuring a larger than average space with en-suite shower room and a dressing area with bespoke fitted wardrobes.

Externally, the property benefits from driveway parking for two vehicles to the rear.

- Nova Estate Agents
- Press Play Button For 360° Walkaround Tour
- Spacious Family Home
- Only 4 Years Old!
- NHBC Warranty Remaining
- Large Master Bedroom with En-suite
- Walk in Wardrobe
- Modern Finishes Throughout
- Parking with Electric Charger
- Close to Shops & Amenities

£410,000

Approx Gross Internal Area
122 sq m / 1314 sq ft



Denotes head height below 1.5m

This floorplan is only for illustrative purposes and is not to scale. Measurements of rooms, doors, windows, and any items are approximate and no responsibility is taken for any error, omission or mis-statement. Icons of items such as bathroom suites are representations only and may not look like the real items. Made with Made Snappy 360.

