



**Connells**

Hare Meadow  
Great Barford Bedford



## Property Description

A beautifully presented three-bedroom home nestled in the ever-popular village of Great Barford, Bedford — perfect for families, professionals, or those looking to upsize.

The property welcomes you with a bright entrance hall, leading to a spacious lounge on the left, complete with patio doors that seamlessly open onto a low-maintenance rear garden, ideal for relaxing or entertaining. To the right, a well-proportioned kitchen-diner provides the perfect social heart of the home.

Upstairs, the first floor offers three generously sized bedrooms, including a principal bedroom with its own en-suite, alongside a modern family bathroom. A convenient downstairs W/C adds further practicality for busy households.

Externally, the home continues to impress with off-road parking to the front and a private, easy-to-maintain garden to the rear — perfect for modern living with minimal upkeep.

Early viewing is highly recommended to truly appreciate everything this superb home has to offer!!



**Entrance Hall**

**Cloakroom**

**Lounge**

**Kitchen/Diner**

**First Floor**

**Landing**

**Bedroom One**

**Ensuite**

**Bedroom Two**

**Bedroom Three**

**Bathroom**

**External**

**Front Garden**

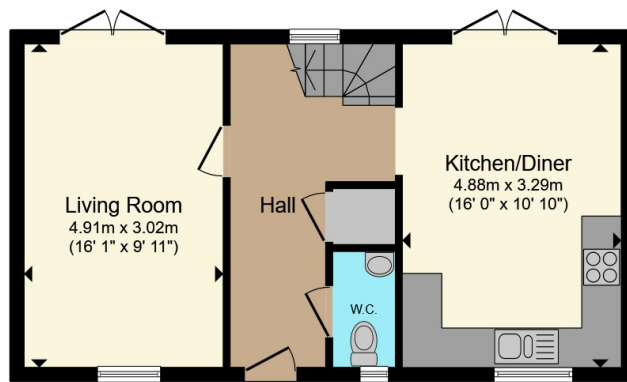
**Rear Garden**

**Parking**

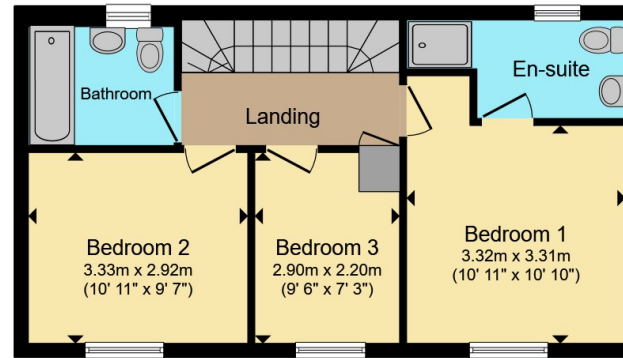








**Ground Floor**



**First Floor**

Total floor area 88.6 m<sup>2</sup> (954 sq.ft.) approx

This floor plan is for illustrative purposes only. It is not drawn to scale. Any measurements, floor areas (including any total floor area), openings and orientation are approximate. No details are guaranteed, they cannot be relied upon for any purpose and they do not form part of any agreement. No liability is taken for any error, omission or misstatement. A party must rely upon its own inspection(s). Powered by [www.propertybox.io](http://www.propertybox.io)



To view this property please contact Connells on

**T 01234 345 303**  
**E [bedford@connells.co.uk](mailto:bedford@connells.co.uk)**

42 Allhallows  
 BEDFORD MK40 1LN

EPC Rating: B Council Tax  
 Band: D

Tenure: Freehold

**view this property online [connells.co.uk/Property/BED313020](http://connells.co.uk/Property/BED313020)**



1. MONEY LAUNDERING REGULATIONS Intending purchasers will be asked to produce identification documentation at a later stage and we would ask for your co-operation in order that there will be no delay in agreeing the sale. 2. These particulars do not constitute part or all of an offer or contract. 3. The measurements indicated are supplied for guidance only and as such must be considered incorrect. Potential buyers are advised to recheck measurements before committing to any expense. 4. We have not tested any apparatus, equipment, fixtures, fittings or services and it is in the buyers interest to check the working condition of any appliances.

Connells Residential is registered in England and Wales under company number 1489613, Registered Office is Cumbria House, 16-20 Hockliffe Street, Leighton Buzzard, Bedfordshire, LU7 1GN. VAT Registration Number is 500 2481 05.

**See all our properties at [www.connells.co.uk](http://www.connells.co.uk) | [www.rightmove.co.uk](http://www.rightmove.co.uk) | [www.zoopla.co.uk](http://www.zoopla.co.uk)**

Property Ref: BED313020 - 0004