



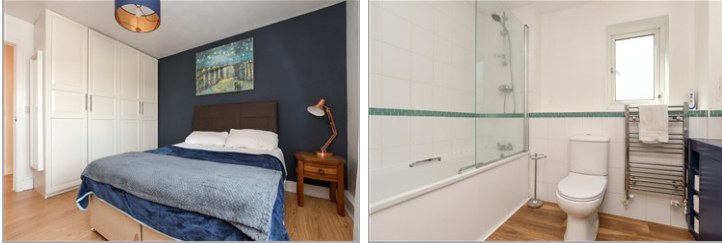
Price
£245,000

Leasehold

2x  1x  1x 

**Gellar Court, Station
Approach, Horley,
Surrey, RH6**

cubitt & west
Helping you move forwards



Main features

- Chain free first floor apartment
- Plenty of storage
- Option to purchase at 35% share
- Walking distance to train station and local amenities
- Beautifully presented and recently decorated throughout

Accommodation

FIRST FLOOR

Entrance Hallway

Kitchen/Lounge/Diner: 13'10 x 11'9
(4.22m x 3.58m)

Juliet Balcony

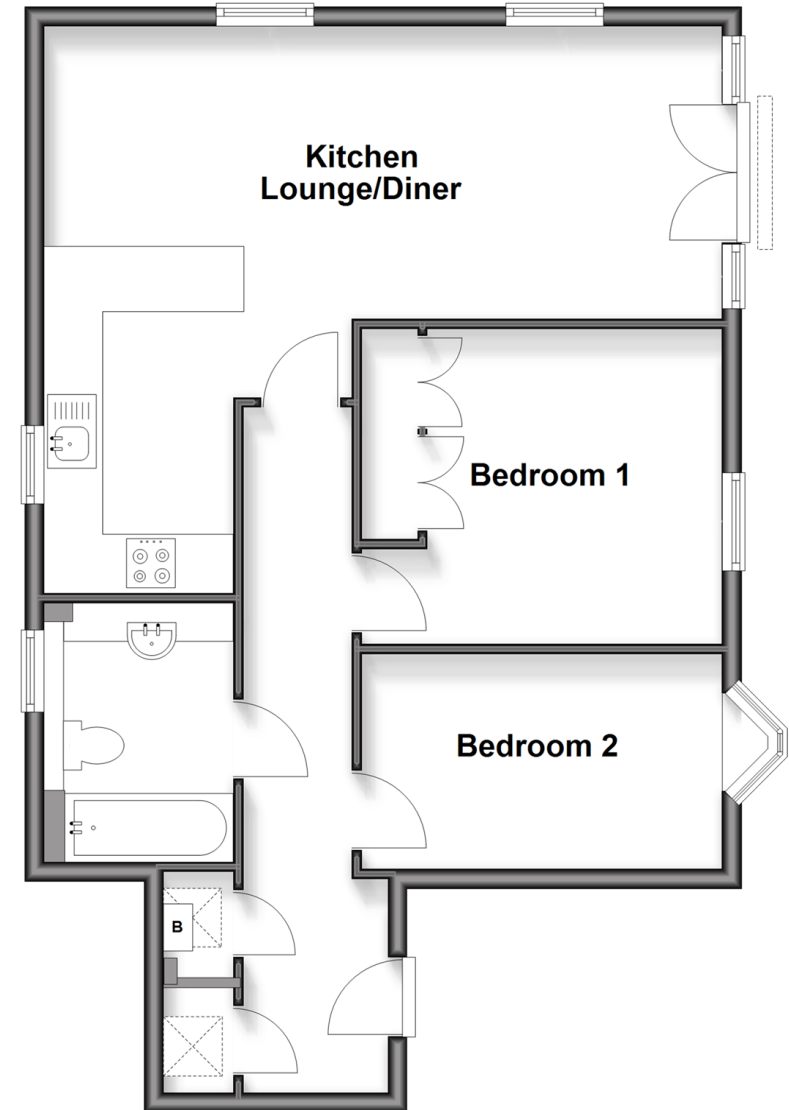
Bedroom 1: 4'0 x 3'6 (1.22m x 1.07m)

Bedroom 2: 4'5 x 4'0 (1.35m x 1.22m)

Bathroom

First Floor

Approx. 64.9 sq. metres (698.5 sq. feet)



Call Horley - 01293 785338 ■ cubittandwest.co.uk

- Legal advice should be taken to verify fixtures/fittings, planning, alterations and/or lease details
- Appliances & services are untested, dimensions are approximate and floor plans are not to scale



20811228/20250908/DI/CB