



# KENNINGTON PARK ROAD, SE11

£425,000

- One bedroom
- Georgian conversion
- Lots of natural light
- High ceilings
- Excellent condition
- Central location

@marshandparsons  
marshandparsons.co.uk

MARSH &  
PARSONS



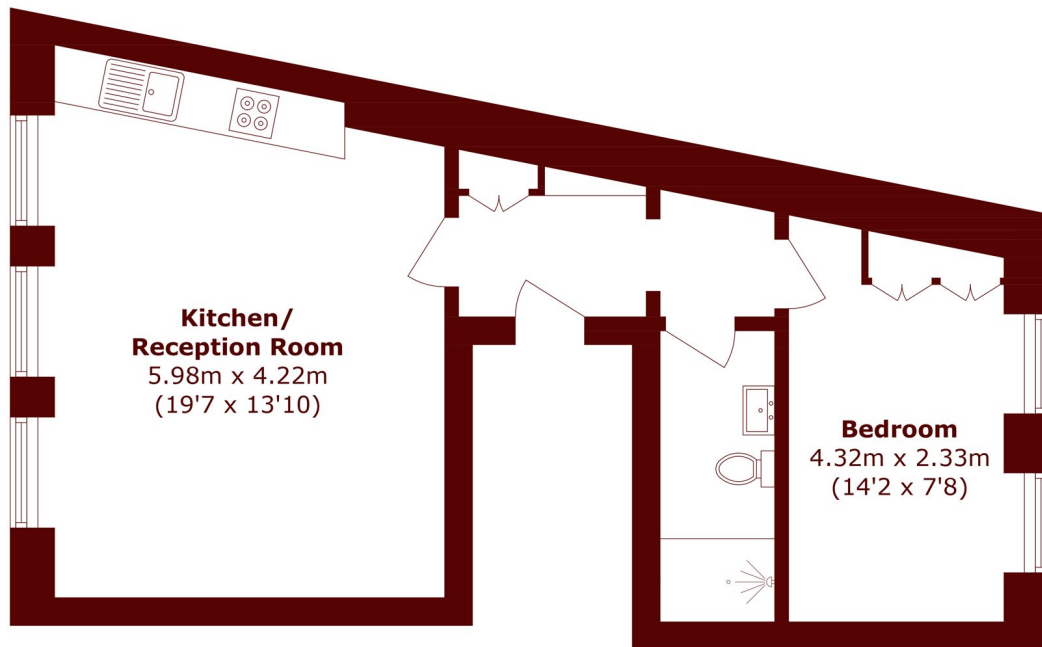
# ABOUT THE PROPERTY

A spacious one bedroom apartment situated on the second floor of an elegant Georgian period conversion. Presented in excellent condition throughout, the property features a bright and spacious reception room with large sash windows providing lots of natural light. With high ceilings throughout, enhancing the sense of space and character, the bedroom is quietly positioned at the rear of the building and includes built-in storage.

Located on this popular tree lined road, moments from Kennington station and a short walk from the numerous bus routes offering easy access to The City & West End.



# STEP INSIDE KENNINGTON PARK ROAD



Total area (approx.): 46.8 sq. m (503.8 sq. ft)

**Kennington**  
020 7587 1533

Energy Rating: C We aim to make our particulars both accurate and reliable. However, they are not guaranteed; nor do they form part of an offer or contract. If you require clarification on any points then please contact us, especially if you're traveling some distance to view. Please note that appliances and heating systems have not been tested and therefore no warranties can be given as to their good working order

**MARSH &  
PARSONS**