

Scott Ellis Gardens, NW8

£2,150 Per calendar month

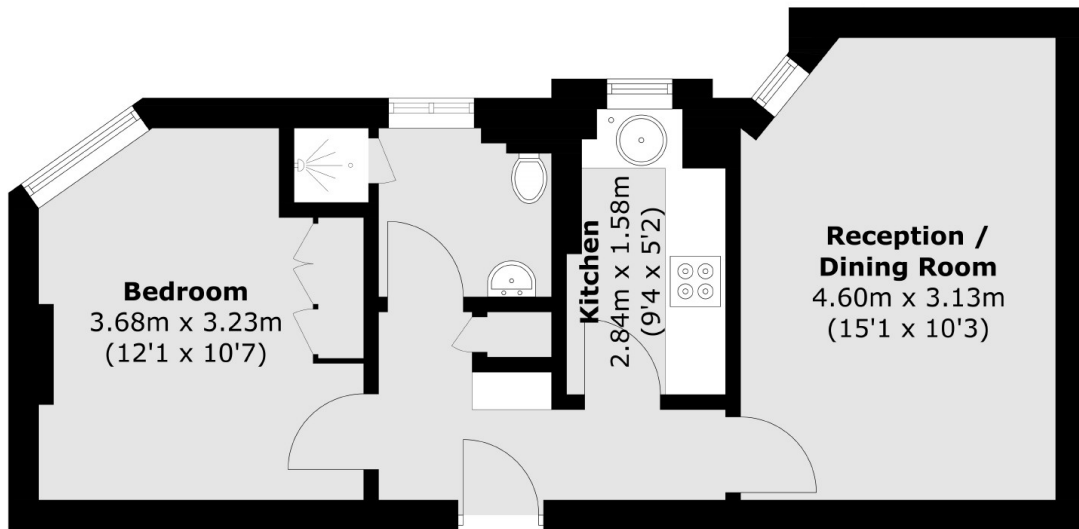
A bright one bedroom apartment set within a purpose built block close to Lords Cricket Ground in St Johns Wood. Spacious reception room, separate kitchen, modern bathroom and wooden flooring throughout.

Scott Ellis Gardens is located close Lords Cricket Ground, Regents Park and St John's Wood High Street.

Features

- One Bedroom
- One Bathroom
- Separate Kitchen
- First Floor
- Lift
- Communal Gardens

Scott Ellis Gardens, London, NW8



Total area (approx.): 39.0 sq. m (419.8 sq. ft)