



The Fir

3 bedroom semi-detached or detached home



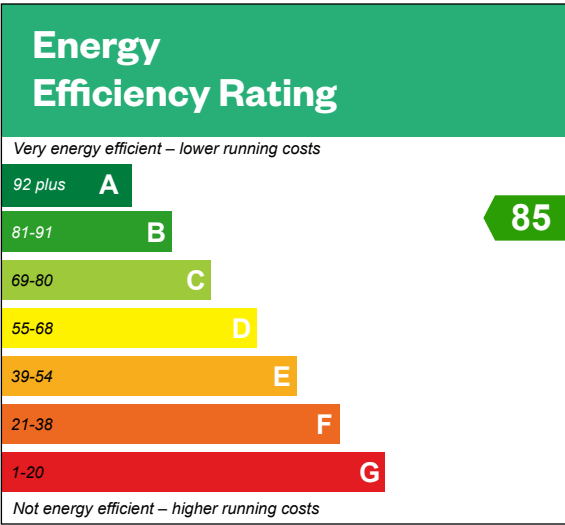
Computer Generated Image - The Fir

The Fir

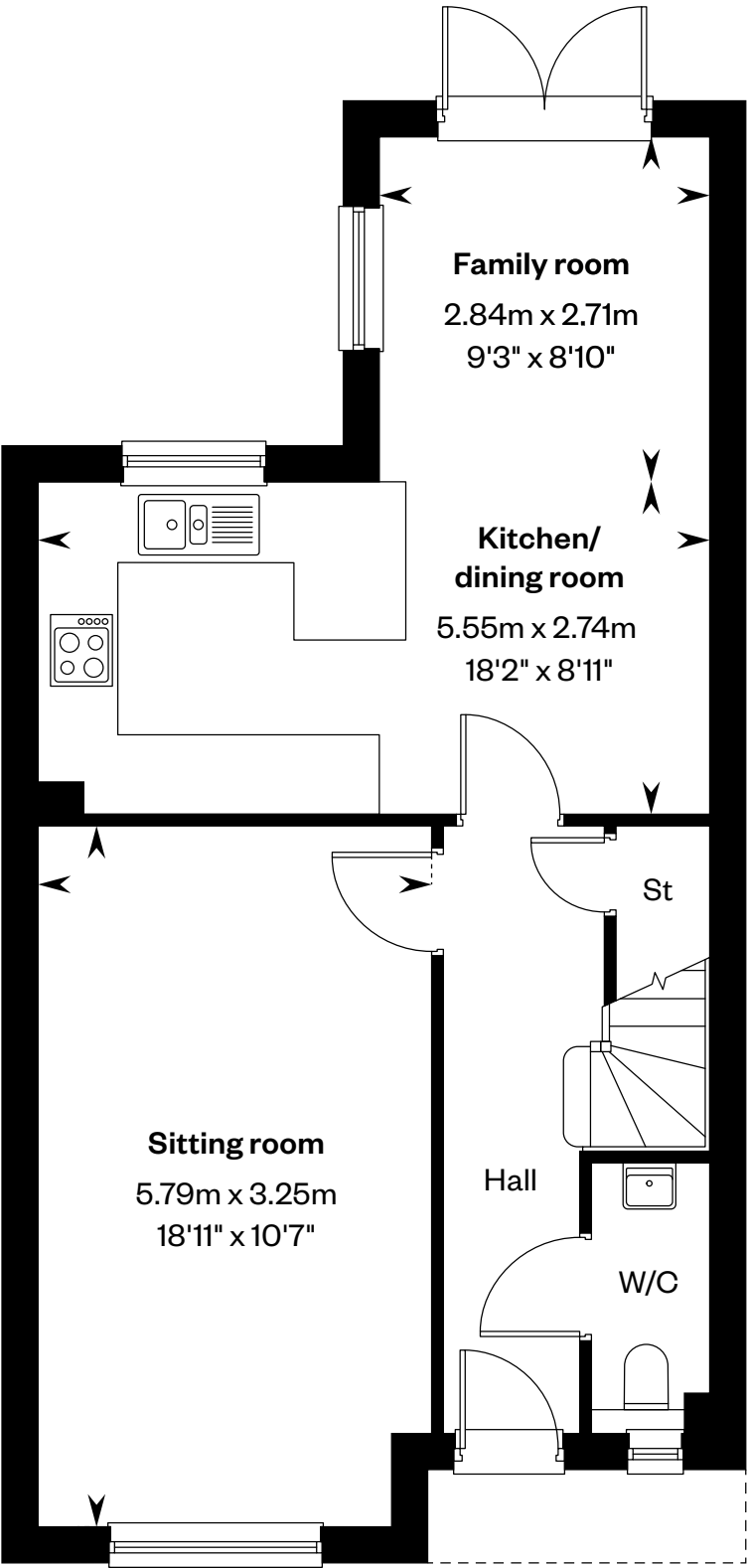
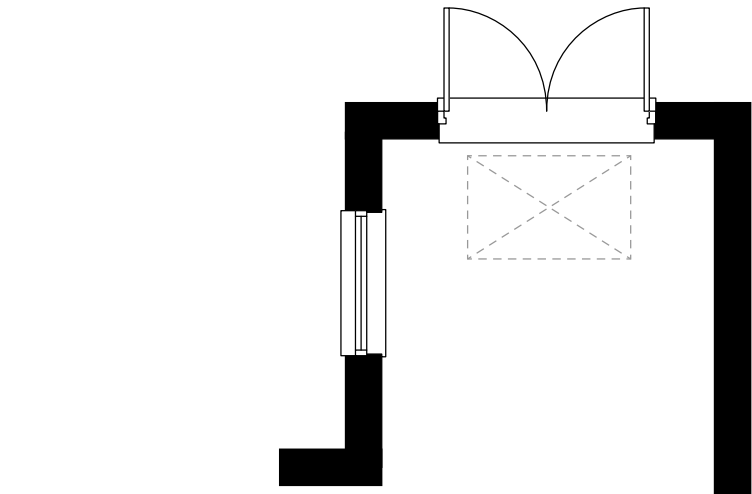
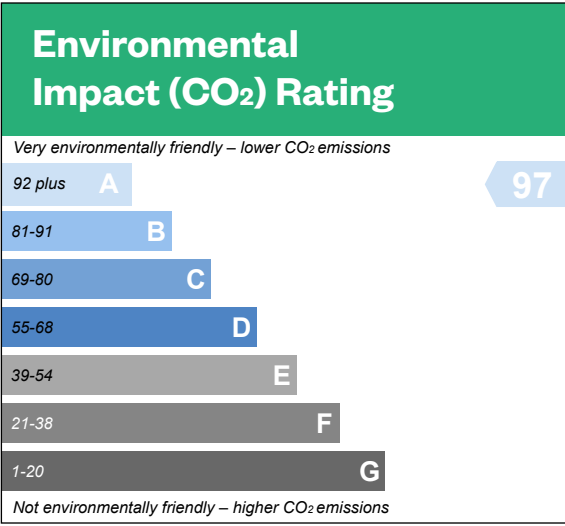
3 bedroom semi-detached or detached home

Plots 7, 11, 13, 37, 55, 72, 74 & 85 – as shown

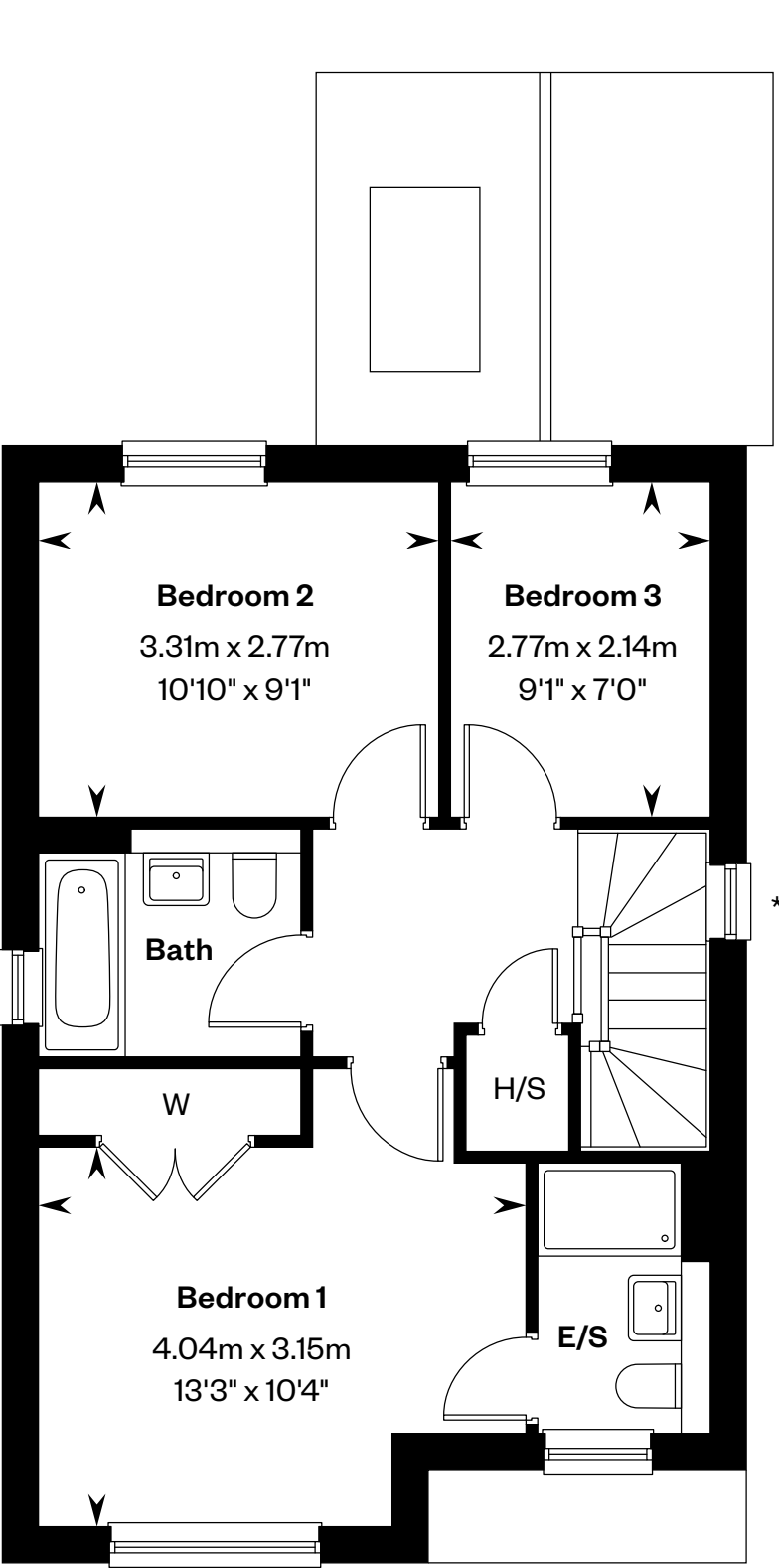
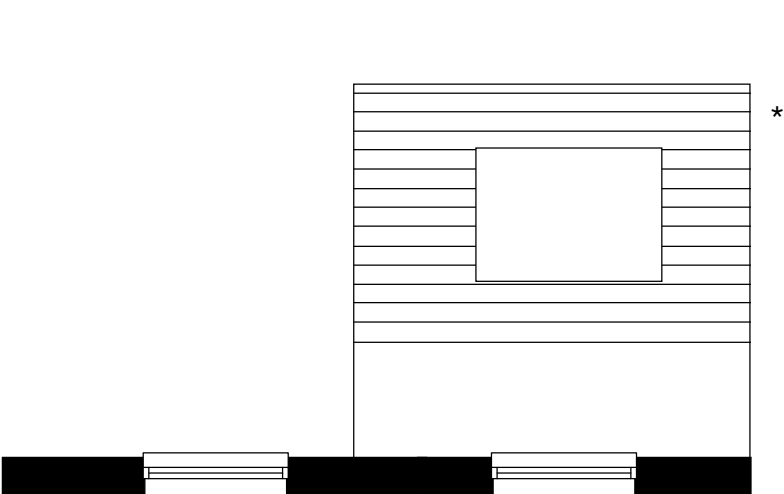
Plots 8, 12, 14, 36, 41, 56, 70, 73 & 84 – handed



This is a Predicted Energy Assessment for properties that are incomplete. Once the property is completed, this rating will be updated and an official Energy Performance certificate will be created for the property.



Ground floor



First floor

*Rear elevation and window omitted to plots 7, 8, 11, 12, 13, 14, 36, 37, 41, 55, 56, 70, 72 & 73 only. *Roof light to plots 41, 74 & 84 only. Please ask your Sales Consultant for further details.

E/S: En-Suite. H/S: Heating source cupboard. St: Store cupboard. W: Wardrobe. : Roof light.

IMPORTANT NOTICE TO CUSTOMERS: The Consumer Protection from Unfair Trading Regulations 2008. Cala Homes (North Home Counties) Limited operates a policy of continual product development and the specifications outlined in this brochure are indicative only. The computer generated images and photographs do not necessarily represent the actual finishings/ elevation or treatments, landscaping, furnishings and fittings at this development. Information contained is accurate at date of publication on 28.08.25. See the main brochure for the full Consumer Protection statement.