



105 Crompton Street, Oldham, OL1 2BU

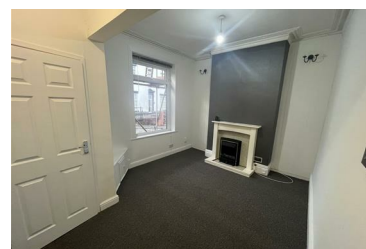
£900 Per month



@ThePlace is delighted to present this well-presented three-bedroom mid-terraced family home, situated in the popular area of Oldham Edge. Located just 8.2 miles from Manchester City Centre, this property offers convenient access to local amenities and excellent transport links.

Upon entering, you are welcomed into a vestibule leading to a light and bright front reception room featuring a charming fireplace. The spacious kitchen diner, located to the rear, provides access to the courtyard garden, perfect for outdoor relaxation.

The first floor comprises three well-proportioned bedrooms, including two doubles, all finished to a high standard. The modern



Suite 2, The Old Courthouse Chapel Street, Dukinfield, SK16 4DT

Tel: 0333 358 0668 Email: lettings@at-the-place.com <https://www.at-the-place.com>