



## Heath Road, TW1

£399,999

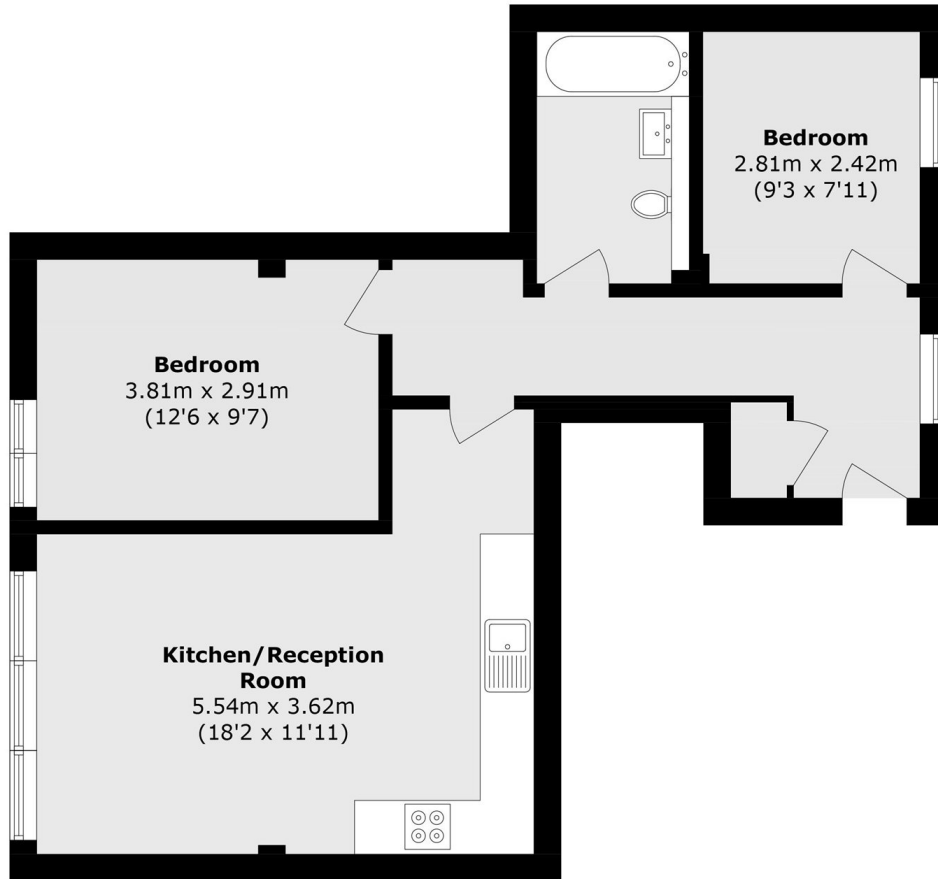
Offers In Excess Of £399,999. Built in 2020 and located at the rear of the building is this impressive two bedroom modern apartment is not to be missed. Presented beautifully throughout and offering a fantastic location and just over 600 sq ft of accommodation

Heath Road is the high street running through the heart of the town centre and it offers a vast array of shops, pubs, café's and restaurants. Twickenham mainline station provides a fast train to London Waterloo and there are also various bus routes in and out of Twickenham and through to Richmond.

### Features

- Two Bedrooms
- Excellent Condition
- Long Lease With Low Charges
- First Floor
- Secure Entry Phone System
- Modern

# Heath Road, Twickenham, TW1



Total area (approx.): 56.5 sq. m (608.1 sq. ft)