



Webber Row, SE1

£575,000

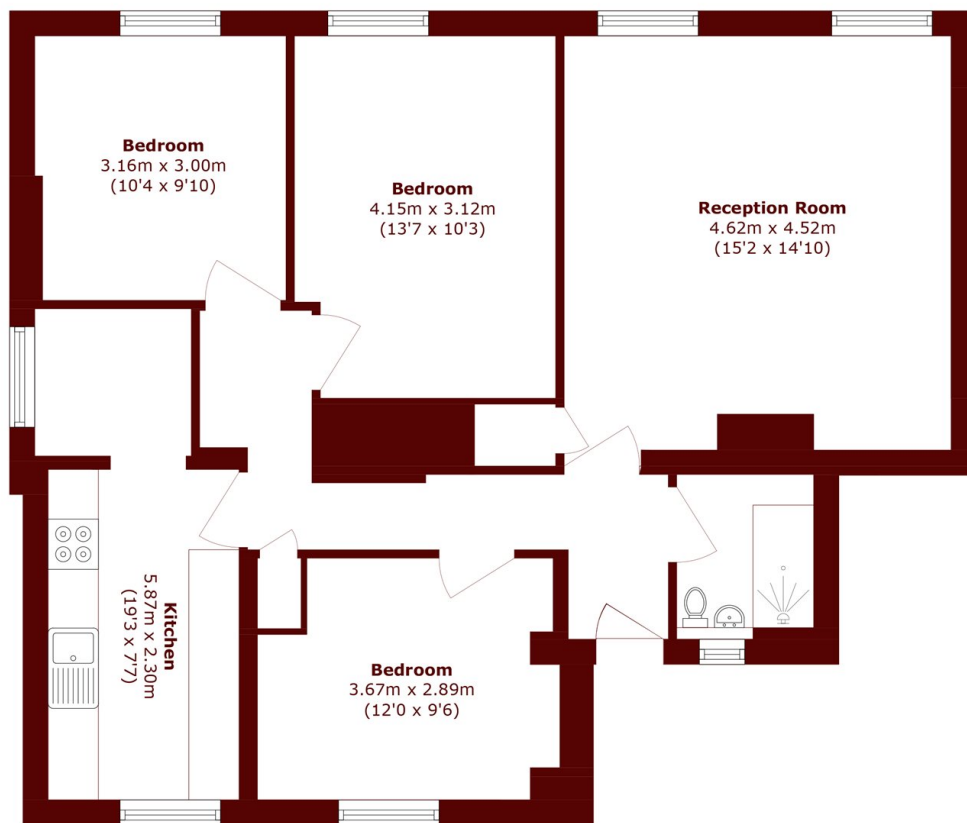
This beautifully appointed Victorian Mansion flat offers a perfect blend of period character and modern convenience. Featuring high ceilings and rich wooden floors throughout, the flat comprises three spacious bedrooms, a generous living room, and a separate eat-in kitchen. The property also benefits from a contemporary three piece shower room, combining practicality with style.

Webber Row is perfectly positioned just moments from Waterloo Station, the bustling Southbank, Lower Marsh, The Cut and the South Bank. Step outside and you'll find an eclectic mix of independent cafés, artisan bakeries, and vibrant street markets, alongside lively bars and independent shops. This is a neighbourhood full of character, culture, and convenience.

Features

- Victorian Mansion Flat
- Gated Entranceway
- Three Double Bedrooms
- Wooden Flooring
- High Ceilings
- Very Central Location
- Communal Gardens
- Permit Parking Available

Webber Row, London, SE1



Total area (approx.): 86.7 sq. m (933.2 sq. ft)