



Guide Price
£275,000

Freehold

1x  1x  1x 

**Bridgers Mill, Haywards
Heath, West Sussex,
RH16**

OVER 60?

Secure this property
for up to **59% less!**

cubitt & west
Helping you move forwards



Main features

- Private landscaped rear garden
- Cul-de-sac location
- Short walk to train station & town centre
- Recently added flooring & carpets throughout
- Recently installed fencing in the garden
- Allocated parking space

Accommodation

GROUND FLOOR

Lounge/Kitchen/Dining Room: 20'6 x 10'9 (6.25m x 3.28m)

FIRST FLOOR

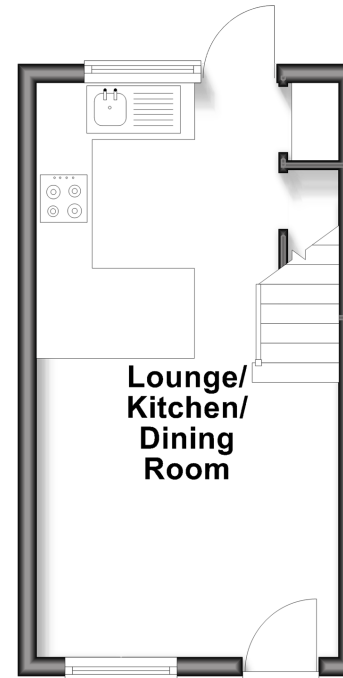
Landing
 Bedroom : 13'5 x 10'8 (4.09m x 3.25m)
 Shower Room

OUTSIDE

Rear Garden
 Allocated Parking Space

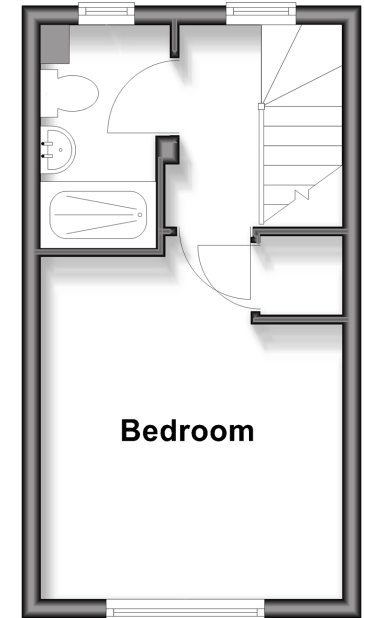
Ground Floor

Approx. 19.4 sq. metres (209.2 sq. feet)



First Floor

Approx. 19.4 sq. metres (209.2 sq. feet)



Call Haywards Heath - 01444 411132 ■ cubittandwest.co.uk

■ Legal advice should be taken to verify fixtures/fittings, planning, alterations and/or lease details
 ■ Through a Homewise Home For Life Plan people aged 60+ can secure this property for up to 50% less, by purchasing a Lifetime Lease.

■ Appliances & services are untested, dimensions are approximate and floor plans are not to scale



22705350/20250930/DD/DD