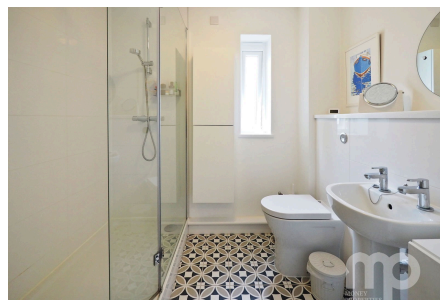


Melton Close, Wymondham, NR18 0JW

Offers In Region Of £255,000

3 1 1



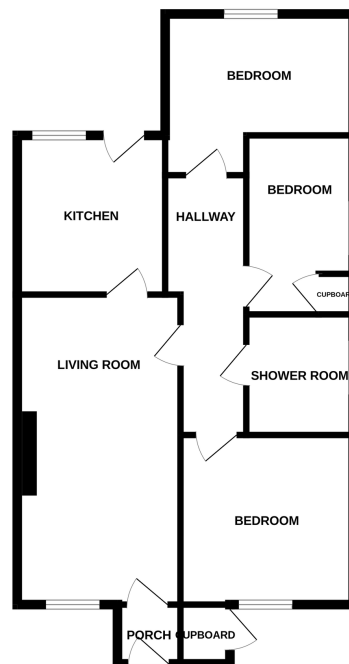
Well-Presented Three Bedroom End-Terrace Bungalow in a Peaceful Setting. Coming to market for the first time in 25 years, this beautifully positioned three-bedroom end-terrace bungalow enjoys a tranquil outlook over grassland and mature oak trees, offering a rare combination of privacy and convenience. Located on a quiet cul-de-sac, the property benefits from a private car park for residents and visitors to the side.

Tenure: Freehold EPC: D Council Tax: B

Key Features

- Beautifully positioned three bedroom end of terrace bungalow
- A well stocked South West rear garden and 8ft x 8ft garden shed and electrics
- Parking for 2 cars on the parking area to the side of the property
- 15 minute walk from the Historic town centre with all its amenities
- Walking distance from sought after local schools with Outstanding and good ofsted reports
- Offering approximately 700 sq ft of living space
- Views of grass land and oak trees to the front of the property
- Ideally placed for access to the main A11 for those commuting by road
- There are regular bus and rail services to Norwich and Cambridge
- See our full online listing for further details including flood risk, broadband speed and other material information.

GROUND FLOOR



Whilst every attempt has been made to ensure the accuracy of the floorplan contained here, measurements of doors, windows, rooms and any other items are approximate and no responsibility is taken for any error, omission or misstatement. This plan is for illustrative purposes only and should be used as such by any prospective purchaser. The services, systems and appliances shown have not been tested and no guarantee as to their operability or efficiency can be given.
Made with Metropix C325