



**Plot 84, The Hadley, Rose Place, Welshpool Road, Bicton Heath, Shrewsbury, SY3 5BU**  
£400,000



Plot 84, The Hadley, Rose Place, Welshpool Road, Bicton Heath, Shrewsbury, SY3

**£400,000**

The Hadley is the perfect first home for growing young families. The heart of this home is the open plan kitchen-diner with French doors to the South-West facing garden. You'll love the spacious lounge and handy utility room too. Upstairs, the main bedroom has a luxurious en-suite shower, a further double bedroom, single/study and a family bathroom.

## Description



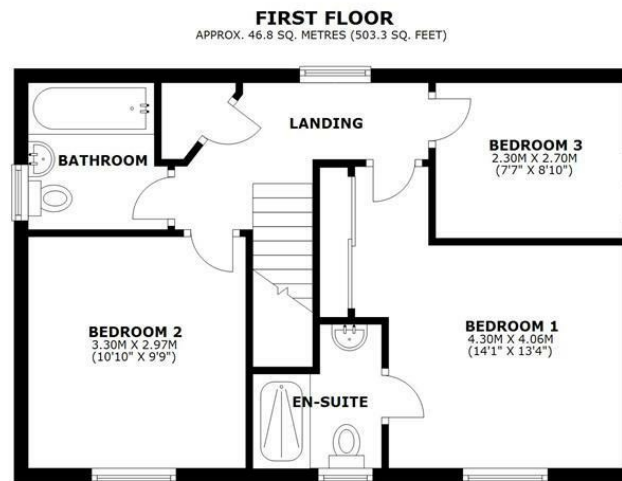
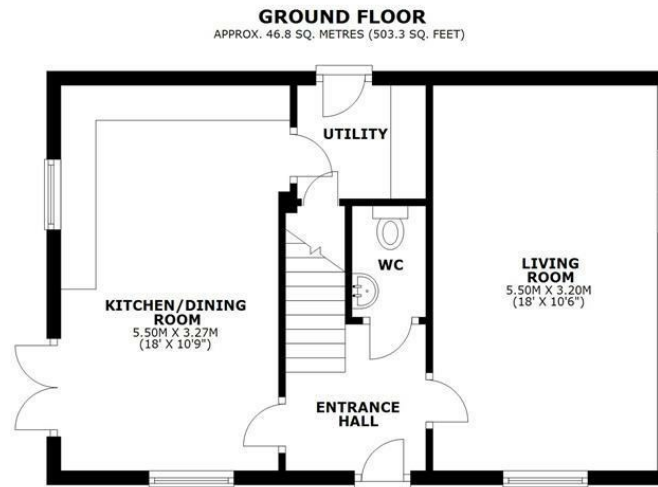
null

Council Tax Band:

Available:

EPC:

## Floor Plans



**TOTAL AREA: APPROX. 93.5 SQ. METRES (1006.6 SQ. FEET)**

We accept no responsibility for any mistake or inaccuracy contained within this floorplan. The floorplan is provided as a guide only and should be taken as an illustration only. The measurements, contents and positioning are approximations only and provided as a guidance tool and not an exact replication of the property. Plan produced using PlanUp.

These particulars, whilst believed to be accurate are set out as a general outline only for guidance and do not constitute any part of an offer or contract. Intending purchasers should not rely on them as statements of representation of fact, but must satisfy themselves by inspection or otherwise as to their accuracy. No person in this firm's employment has the authority to make or give any representation or warranty in respect of the property.