



Vyner Street, E2

£700,000

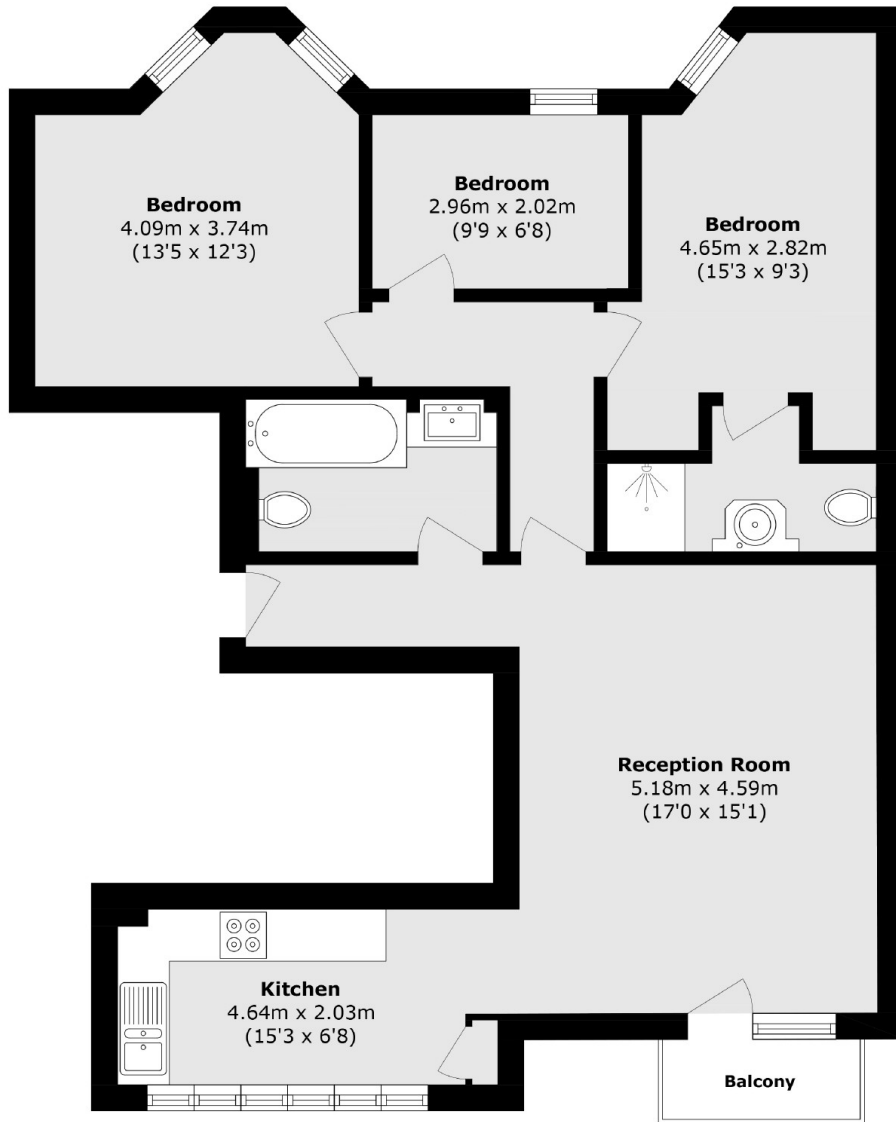
A three double-bedroom flat set within the old Burberry trench coat factory. Measuring over 850 sq ft, the property offers a semi-open plan living area which leads onto a private balcony and kitchen, over looking the street, and a large family bathroom. To the back of the apartment are three double bedrooms, one complete with an ensuite.

Down a quiet but lively side street, with recently opened wine bars and artist spaces, Vyner street offers a great community feel and is moments from Victoria Park and London Fields for green spaces, restaurants and bars. Both Bethnal Green underground and London Fields overground are 0.6 miles making it very well connected.

Features

- Warehouse Conversion
- Three Double Bedrooms
- London Fields
- Victoria Park
- Private Balcony
- Two Bathrooms

Vyner Street, London, E2



Total area (approx.): 82.3 sq. m (885.8 sq. ft)
Balcony area (approx.): 2.1 sq. m (22.6 sq. ft)