



Price
£350,000

Leasehold

2x  1x  1x 

**Keswick Close, Sutton,
Surrey, SM1**

OVER 60?

Secure this property
for up to **59% less!**

cubitt & west
Helping you move forwards



Main features

- Quiet cul-de-sac location
- Own entrance and spacious private rear garden
- Walking distance to station and High Street
- Great selection of Primary and Secondary schools nearby
- Sunny conservatory

Accommodation

GROUND FLOOR

Entrance Hall

Lounge: 16'2 x 12'6 (4.93m x 3.81m)

Kitchen: 11'2 x 8'5 (3.41m x 2.57m)

Conservatory: 12'10 x 8'3 (3.91m x 2.52m)

Bedroom 1: 13'9 x 13'5 (4.19m x 4.09m)

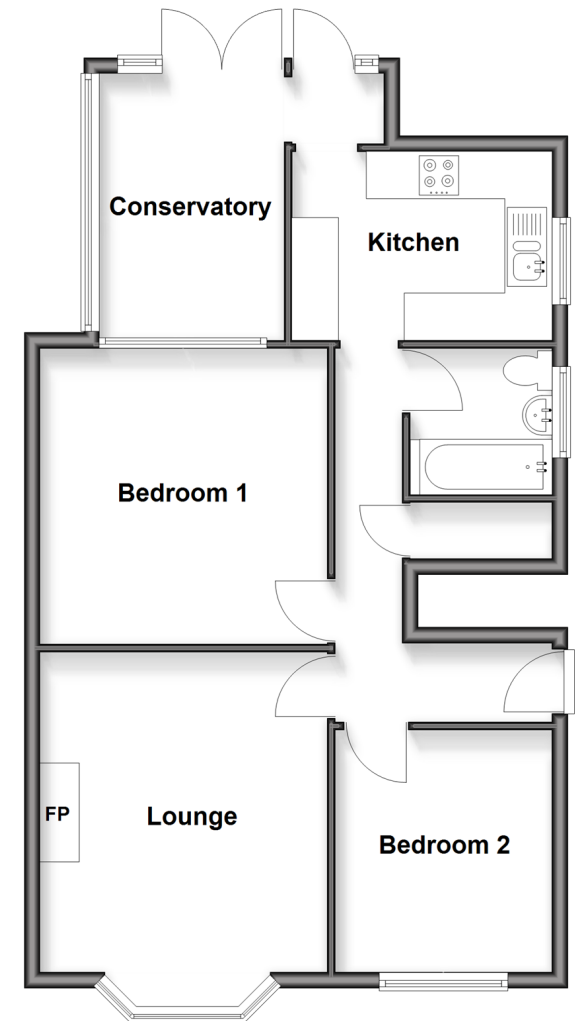
Bedroom 2: 11'6 x 9'8 (3.51m x 2.95m)

Bathroom

OUTSIDE

Rear Garden

Ground Floor
Approx. 66.9 sq. metres (720.6 sq. feet)



Call Sutton - 020 8661 0330 ■ cubittandwest.co.uk

- Legal advice should be taken to verify fixtures/fittings, planning, alterations and/or lease details
- Appliances & services are untested, dimensions are approximate and floor plans are not to scale
- Through a Homewise Home For Life Plan people aged 60+ can secure this property for up to 59% less, by purchasing a Lifetime Lease.



22009159/20250809/CR/JB