



HEARTWOOD  
HOMES

# Marshall Avenue, St. Albans, AL3 5HR

Offers Over £700,000

3 1 3



A chain free home, positioned within a well-connected residential setting on the north side of St Albans, 15 Marshall Avenue offers beautifully renovated accommodation, a generous garden and an enviable lifestyle within easy reach of excellent schools, green open spaces and the city centre.

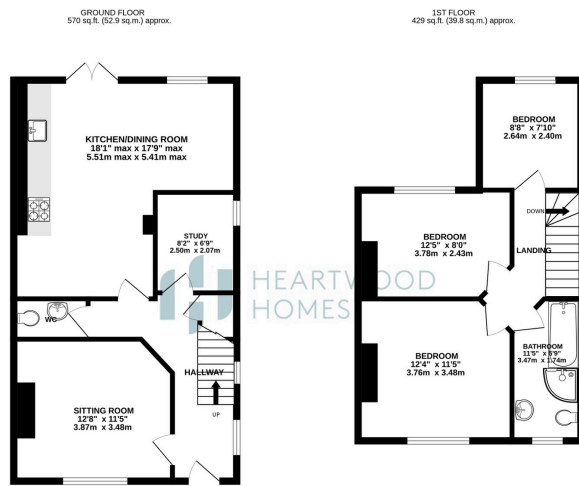
From the moment you step inside, the home feels bright, welcoming and thoughtfully designed. A spacious entrance hall leads through warm oak effect flooring that flows across the ground floor, complemented by a soft neutral colour palette that creates a calm and contemporary atmosphere.

At the heart of the home is an impressive open-plan kitchen, dining and living space designed for modern family life. Whether hosting friends, helping with homework at the dining table or enjoying a quiet evening, this versatile room adapts effortlessly to everyday living. The stylish kitchen features elegant cabinetry, quality worktops, brushed brass detailing and integrated appliances including a dishwasher and washing machine. French doors open directly onto the garden, creating a seamless connection between indoor and outdoor living and making summer entertaining particularly enjoyable.

To the front of the property, a separate reception room provides a cosy retreat for relaxing evenings, movie nights or a peaceful space to unwind. The ground floor also benefits from a versatile fourth bedroom, offering flexibility as a home office, gym, playroom or guest accommodation depending on your needs.

Upstairs, three well-proportioned bedrooms continue the home's calm and inviting feel. The principal bedroom provides a bright and comfortable sanctuary with ample space for wardrobes. The second double bedroom enjoys pleasant views over the rear garden, while the third bedroom is ideal as a child's room, nursery or study. Serving all three rooms is a beautifully appointed family bathroom featuring ribbed tiling, brushed brass fittings and carefully selected finishes that create a boutique hotel-inspired feel.





TOTAL FLOOR AREA: 999 sq.ft. (92.8 sq.m.) approx.  
We do not warrant that these floor plans represent an accurate or complete representation of the proposed development, measurements of areas, volumes, levels and any other items are approximate and no responsibility is taken for any error, omission or misstatement. This plan is for guidance purposes only and should be used in conjunction with any other information provided. The architect, engineer and other professionals have not been asked to guarantee the accuracy of the information shown on this plan. The architect, engineer and other professionals have not been asked to guarantee the accuracy of the information shown on this plan. The architect, engineer and other professionals have not been asked to guarantee the accuracy of the information shown on this plan.



- Beautifully renovated three/ four-bedroom chain free home
- Separate reception room ideal for relaxing or entertaining
- Stylish family bathroom with high-quality finishes
- French doors opening directly onto the garden
- Close to highly regarded schools and Bernards Heath
- Stunning open-plan kitchen, dining and living space
- Flexible ground-floor fourth bedroom/home office
- Large rear garden with excellent space for families
- Walking distance to the city centre and mainline station
- EPC Grade C

