

OVER 60?

Secure this property
for up to **59% less!**



Guide Price
£400,000
Freehold

4x  1x  2x 

North Street, Sittingbourne, Kent, ME10

Wards
Helping you move forwards



Main features

- Large driveway for multiple cars
- Workshop in garden; ideal for working from home
- Close to local schools , shops and amenities
- Walking distance to local park
- Ideal family home with versatile living space throughout
- Chain free

Accommodation

GROUND FLOOR

Entrance Hall
Cloakroom
Lounge: 23'9 x 11'0 (7.24m x 3.36m)
Conservatory: 11'7 x 11'0 (3.53m x 3.36m)
Kitchen: 11'8 x 11'1 (3.56m x 3.38m)
Dining Room: 13'4 x 11'8 (4.07m x 3.56m)

FIRST FLOOR

Landing
Bedroom 1: 12'1 x 10'9 (3.69m x 3.28m)
Bedroom 2: 12'6 x 12'0 (3.81m x 3.66m)
Bedroom 3: 11'1 x 9'8 (3.38m x 2.95m)
Bedroom 4: 11'2 x 6'5 (3.41m x 1.96m)
Bathroom

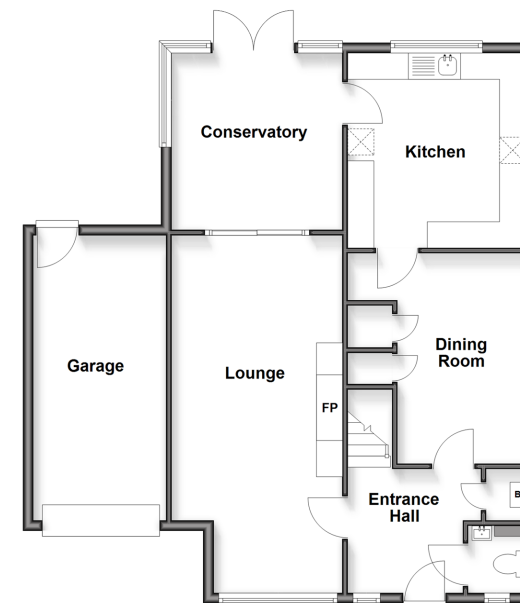
OUTBUILDINGS

Room 1-Used as a workshop: 12'8 x 7'7 (3.86m x 2.31m)
Room 2-Used as a store room: 13'1 x 10'8 (3.99m x 3.25m)

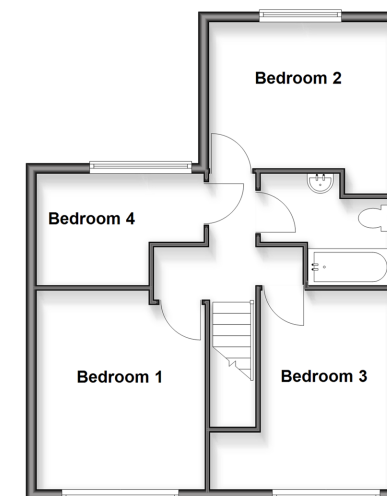
OUTSIDE

Front Garden
Garage & Driveway
Rear Garden

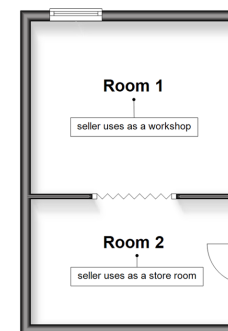
Ground Floor
Approx. 82.9 sq. metres (892.0 sq. feet)



First Floor
Approx. 50.8 sq. metres (546.4 sq. feet)



Outbuilding
Approx. 23.0 sq. metres (247.9 sq. feet)



Call Sittingbourne - 01795 427272 ■ wardsof Kent.co.uk

- Legal advice should be taken to verify fixtures/fittings, planning, alterations and/or lease details
- Appliances & services are untested, dimensions are approximate and floor plans are not to scale
- Through a Homewise Home For Life Plan people aged 60+ can secure this property for up to 50% less, by purchasing a Lifetime Lease.



11738854/20250911/JS/MC1