

# NORLAND SQUARE, W11



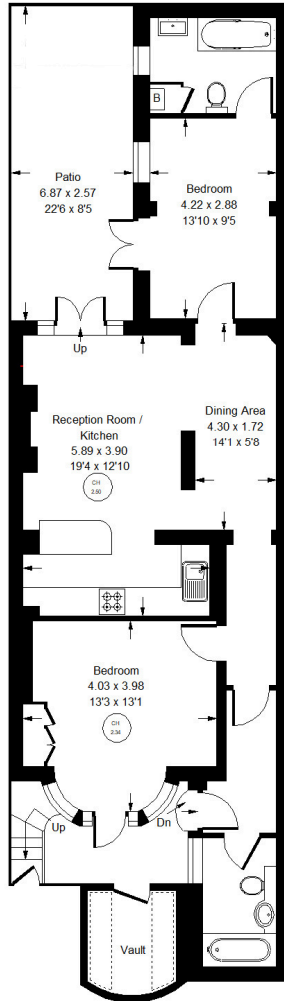
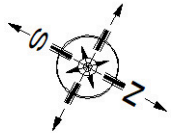


## Norland Square, W11

A wonderful garden flat on the west side of this prestigious communal garden square in Holland Park. The apartment features an open-plan living room and kitchen, complete with a feature fireplace and direct access to a private west-facing patio. The kitchen benefits from a breakfast bar, with a separate dining area. There are two double bedrooms, one which enjoys an en-suite and views over the sunny patio. There is a further bathroom and underground vault access for storage. Residents also benefit from access to the beautifully maintained communal square gardens which features a tennis court. Holland Park Underground station is just moments away, along with the boutiques, cafés and restaurants of Holland Park Avenue and Clarendon Cross. Holland Park itself is a short stroll away, while Notting Hill and Westfield are both within easy reach.



Approx. Gross Internal Area  
= 78.4 sq m / 844 sq ft



Lower Ground Floor



## Norland Square, W11 - Share of Freehold Local Authority - Royal Borough of Kensington & Chelsea

- Two Bedrooms
- Two Bathrooms
- Private West-Facing Patio
- Communal Garden with Tennis Court
- EPC Rating = C
- Council Tax Band = F



Whilst every attempt has been made to ensure the accuracy of the floor plan, measurements are approximate and not to scale. No guarantee is given on the total square footage of the property quoted on the plan. Figures given are for guidance. Plan is for illustration purposes only, not to be used for valuations.