



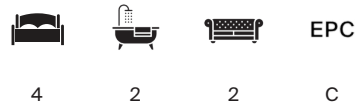
NEVILL ROAD

London N16



A HOUSE IN THE HEART OF STOKE NEWINGTON, N16.

Set in the heart of Stoke Newington, this impressive four-bedroom family home spans approximately 1,660 sq ft and is arranged over three well-proportioned floors, offering flexible living space ideal for family life.

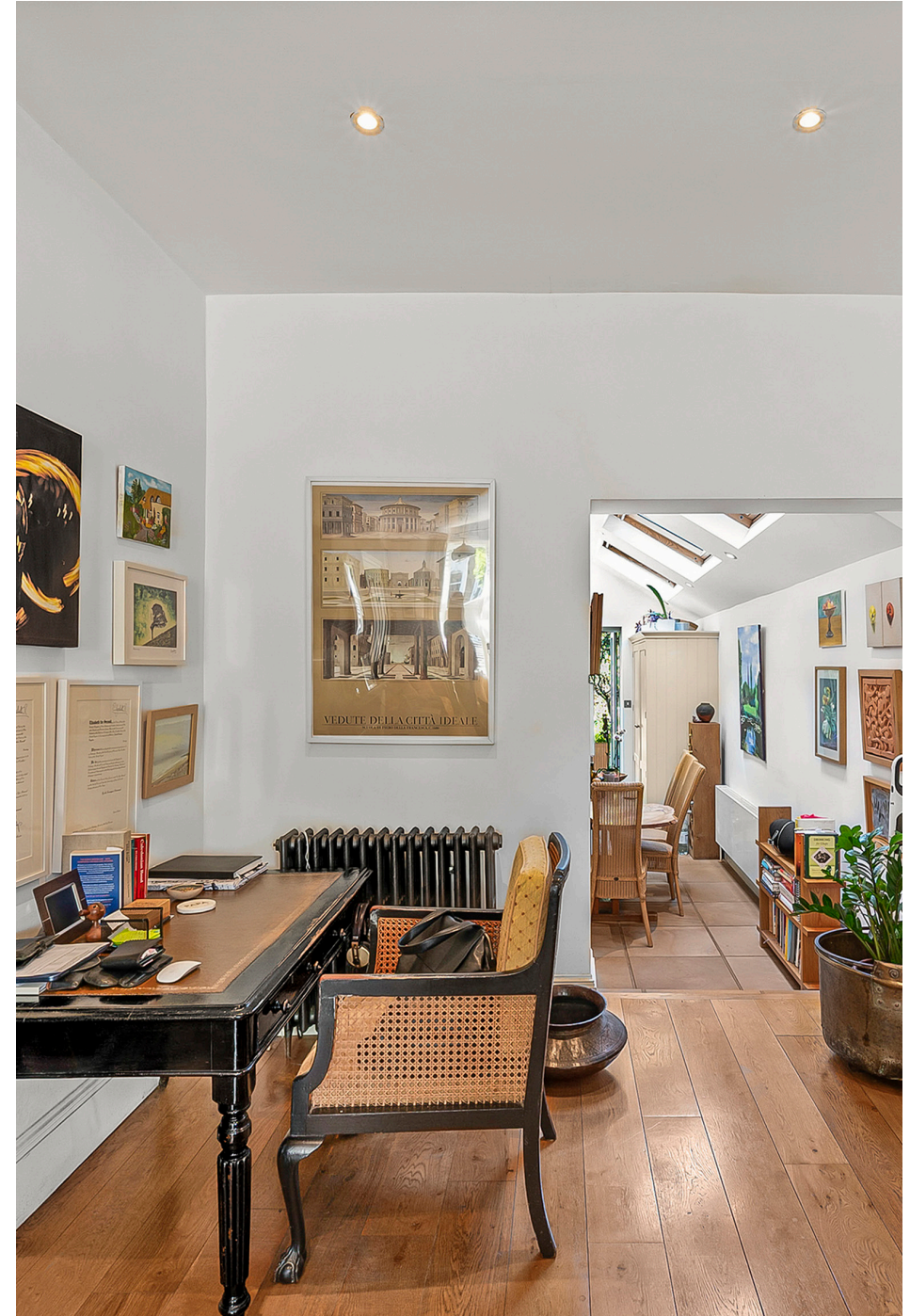


Local Authority: London Borough of Hackney

Council Tax band: E

Tenure: Freehold

Guide Price: £1,750,000



The ground floor features a generous double reception room, showcasing an original bay with sash windows and fireplace. From here, the space flows seamlessly into a bright and expansive kitchen and dining area, enhanced by a side return extension that creates an excellent setting. Floor-to-ceiling, wall-to-wall sliding doors open directly onto a private patio garden, effortlessly blending indoor and outdoor space. On the first floor, there are three well-sized bedrooms along with a bathroom fitted with a walk-in shower. The top floor is dedicated to the principal bedroom suite, featuring a spacious bedroom and a large, separate bathroom. Ideally located close to Stoke Newington's vibrant shops, cafés, green spaces and excellent transport links, this is a beautifully balanced family home combining character, space and contemporary living.

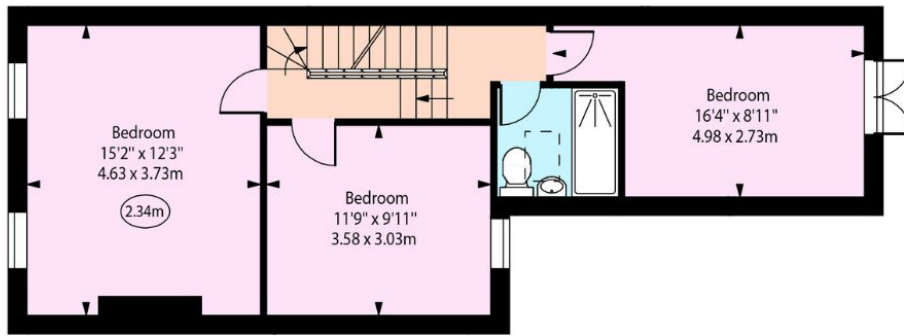
Nevill road is located on a residential street in Stoke Newington. Just 0.6 miles from the house is Rectory road overground, with links directly to Liverpool Street.

Stoke Newington Church Street is just 200 meters from the house - the shopping and culinary hub of Stoke Newington.

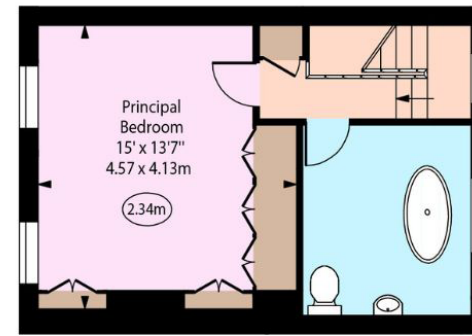




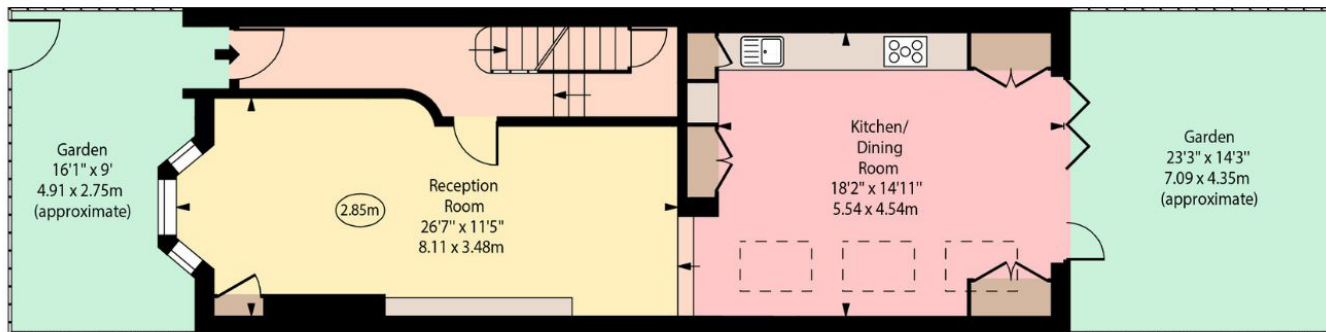
○ - Ceiling Height



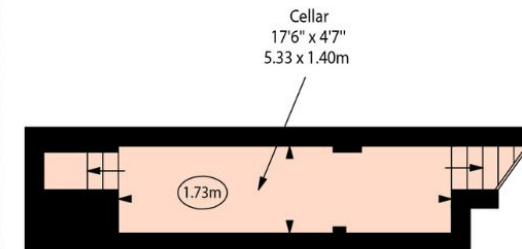
First Floor



Second Floor



Ground Floor



Cellar

(Including Cellar)

Approximate Gross Internal Area = 154.21 sq m / 1660 sq ft

This plan is for layout guidance only. Not drawn to scale unless stated. Windows and door openings are approximate. Whilst every care is taken in the preparation of this plan, please check all dimensions, shapes and compass bearings before making any decisions reliant upon them. (ID767266)



We would be delighted
to tell you more.

Megan Squire

+44 203 657 7352

megan.squire@knightfrank.com

Knight Frank Islington & King's Cross

321-322 Upper Street

London N1 2XQ

[knightfrank.co.uk](https://www.knightfrank.co.uk)

Your partners in property

1. Particulars: These particulars are not an offer or contract, nor part of one. You should not rely on statements given by Knight Frank in the particulars, by word of mouth or in writing ("information") as being factually accurate about the property, its condition or its value. Neither Knight Frank nor any joint agent has any authority to make any representations about the property, and accordingly any information given is entirely without responsibility on the part of Knight Frank. 2. Material Information: Please note that the material information is provided to Knight Frank by third parties and is provided here as a guide only. While Knight Frank has taken steps to verify this information, we advise you to confirm the details of any such material information prior to any offer being submitted. If we are informed of changes to this information by the seller or another third party, we will use reasonable endeavours to update this as soon as practical. 3. Photos, Videos etc: The photographs, property videos and virtual viewings etc. show only certain parts of the property as they appeared at the time they were taken. Areas, measurements and distances given are approximate only. 4. Regulations etc: Any reference to alterations to, or use of, any part of the property does not mean that any necessary planning, building regulations or other consent has been obtained. A buyer must find out by inspection or in other ways that these matters have been properly dealt with and that all information is correct. 5. Fixtures and fittings: A list of the fitted carpets, curtains, light fittings and other items fixed to the property which are included in the sale (or may be available by separate negotiation) will be provided by the Seller's Solicitors. 6. VAT: The VAT position relating to the property may change without notice. 7. To find out how we process Personal Data, please refer to our Group Privacy Statement and other notices at <https://www.knightfrank.com/legals/privacy-statement>.

Particulars dated April 2026. Photographs and videos dated April 2026. All information is correct at the time of going to print. Knight Frank is the trading name of Knight Frank LLP. Knight Frank LLP is a limited liability partnership registered in England and Wales with registered number OC305934. Our registered office is at 55 Baker Street, London W1U 8AN. We use the term 'partner' to refer to a member of Knight Frank LLP or an employee or consultant. A list of members names of Knight Frank LLP may be inspected at our registered office. If you do not want us to contact you further about our services then please contact us by either calling 020 3544 0692, email to marketing.help@knightfrank.com or post to our UK Residential Marketing Manager at our registered office (above) providing your name and address.