

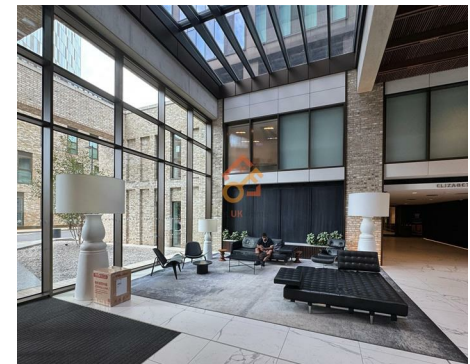


Let **UK** Home

**2 Bedrooms**

**M15 4ZF**

**Located  
in Manchester  
£1,950 Per Month**



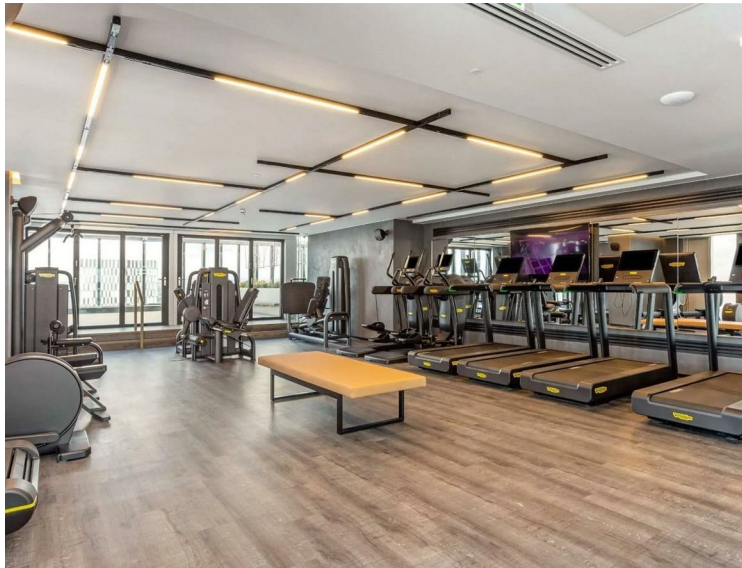
[pmadmin@letukhome.co.uk](mailto:pmadmin@letukhome.co.uk)

<https://www.letukhome.co.uk/>

01615219812



# Elizabeth Tower, 141 Chester Road, Manchester M15



Let UK Home are excited to offer this spectacular two-bedroom apartment in Elizabeth Tower, which is ideally situated in the heart of Manchester and within walking distance to Deansgate.

This property comprises a large bright open plan kitchen and living room, two double bedrooms with fitted wardrobes (master en-suite), a large family sized bathroom and ample storage.

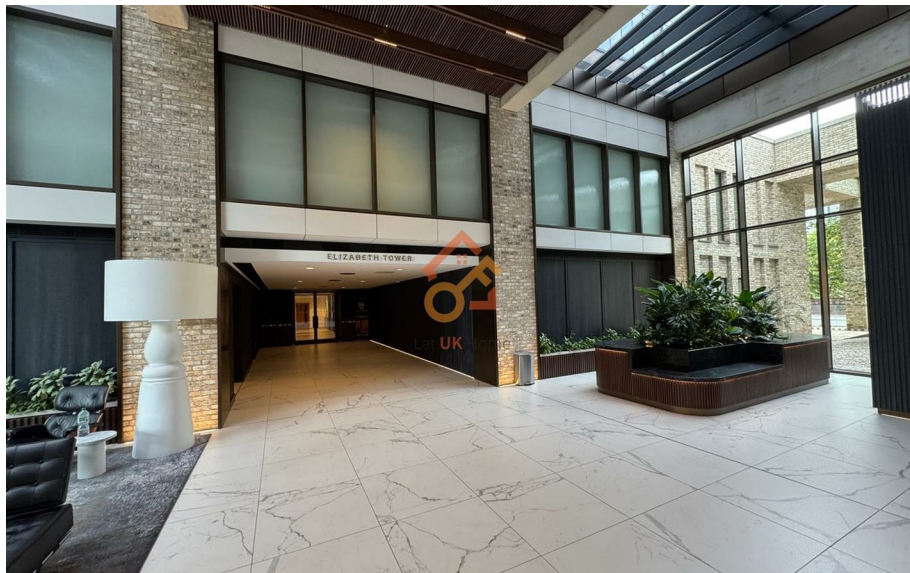
Elizabeth Tower will provide access to exceptional health and wellness resident-only facilities, including a state-of-the-art gym, 20m swimming pool and holistic studio located across the 44th & 45th floors of Elizabeth Tower. Residents can also benefit from two stunning communal roof terraces overlooking the city, comfortable co-working and residents' lounge, private dining area and a concierge.

Elizabeth Tower is located on Crown Street/ Chester Road and within walking distance to the City centre. The surrounding area, known as the New Jackson Area, is a newly developed neighborhood located in the southwest part of Manchester city center. Residents can enjoy the presence of extensive public spaces and green areas, connected by a network of pedestrian and cycle pathways, perfect for outdoor activities and relaxation.

Deansgate tram & train links & bus links are within walking distance whilst the A56 is also very close allowing vehicles easy access in and out of the city centre. Whilst Deansgate offers a host of independent bars, restaurants and shopping, Regent Road retail park is also situated nearby with a large Sainsbury's, tk Maxx, Boots, and much more on offer. Both Manchester's famous football stadiums Old Trafford (home to Manchester United) and the Etihad (home to Manchester City) are within walking distance.

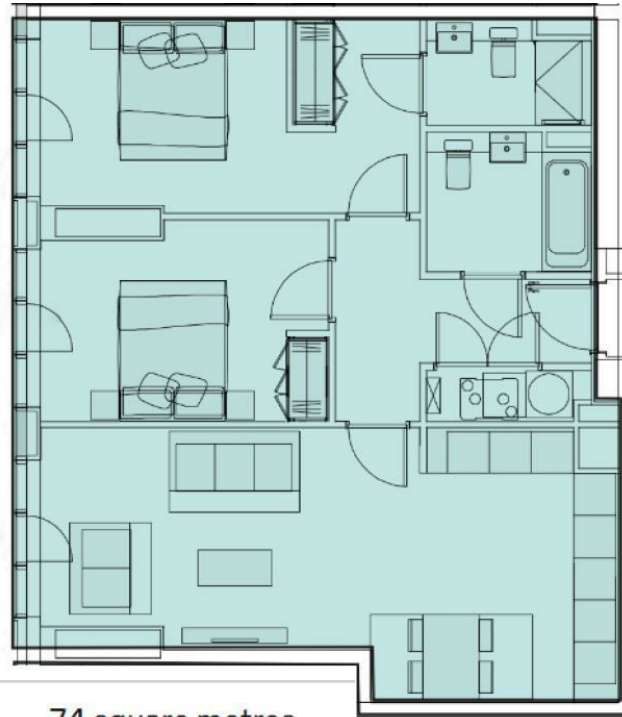
- 8th Floor
- 24h Security
- The Gym
- Rooftop Terrace
- EPC Rating: B

- Concierge Service
- Swimming Pool
- Residents Lounge
- Co-working Space





Greater Manchester



**Total floor area**

**74 square metres**



Let **UK** Home

1/F, St James Tower 7 Charlotte  
Street  
Manchester  
M1 4DZ

pmadmin@letukhome.co.uk

01615219812

**Council Tax Band: D**

**Local Authority:**

Agents Note: Whilst every care has been taken to prepare these particulars, they are for guidance purposes only. All measurements are approximate and are for general guidance purposes only and whilst every care has been taken to ensure their accuracy, they should not be relied upon and potential buyers/tenants are advised to recheck the measurements.

Energy Efficiency Rating		Current	Potential
<i>Very energy efficient - lower running costs</i>			
(92 plus) <b>A</b>			
(81-91) <b>B</b>		86	86
(69-80) <b>C</b>			
(55-68) <b>D</b>			
(39-54) <b>E</b>			
(21-38) <b>F</b>			
(1-20) <b>G</b>			
<i>Not energy efficient - higher running costs</i>			
<b>England &amp; Wales</b>		EU Directive 2002/91/EC	

<https://www.letukhome.co.uk/>