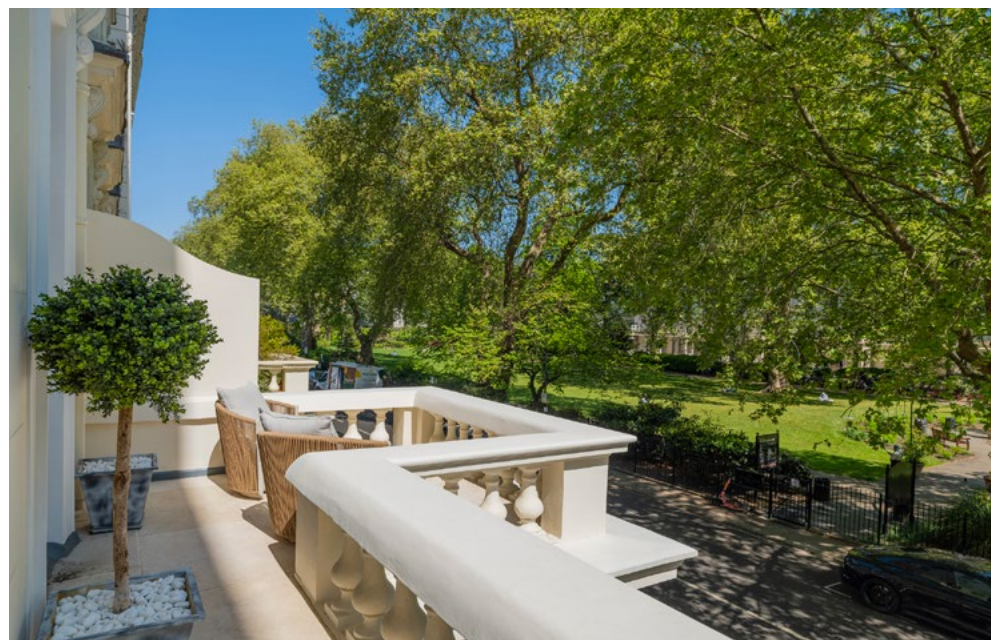


St George's Square



PIMLICO SW1

A remarkable period townhouse offering circa 6,500 sq ft of elegant and contemporary living, set moments from the River Thames on iconic St. George's Square.



Set on one of London's most historic and picturesque garden squares, St. George's Square is a rare opportunity to own a piece of riverside heritage. Built in 1843, this elegant white Victorian stucco townhouse holds the distinction of being the first residential square to open directly onto the River Thames.

Over the years, it has played host to notable residents including Dracula author Bram Stoker, novelist Stephen Potter, and Walter Wingfield, the pioneer of modern lawn tennis.



Set on one of London's most historic and picturesque garden squares, St. George's Square is a rare opportunity to own a piece of riverside heritage. Built in 1843, this elegant white Victorian stucco townhouse holds the distinction of being the first residential square to open directly onto the River Thames. Over the years, St George's Square has played host to notable residents including Dracula author Bram Stoker, novelist Stephen Potter, and Walter Wingfield, the pioneer of modern lawn tennis.

Recently refurbished to the highest standard, the property has undergone a meticulous restoration by the current owner, preserving its original period features while integrating the latest in contemporary design and smart home technology.

Behind its classic Victorian façade lies a beautifully reimagined interior offering approximately 6,500 sq ft of luxurious living space arranged over six floors.

The home comprises six bedrooms, five bathrooms, and a stunning self-contained studio apartment accessed via a short flight of stairs on the top floor, ideal for guests or staff.

Highlights include grand four-metre high ceilings in the drawing room, where floor-to-ceiling windows bathe the space in natural light and frame idyllic views over the square. Chevron-patterned flooring and an intelligent lighting system enhance the sense of modern elegance, providing effortless ambiance and energy efficiency.

Throughout the home, original features such as ornate cornicing, working fireplaces, and deep skirting boards are complemented by amenities such as a lift servicing all main floors, and bespoke finishes throughout.

This is a turnkey residence that perfectly marries timeless architecture with forward-thinking design, a truly exceptional London home with a remarkable past and a modern soul.

ACCOMMODATION

- Drawing room
- Family room
- Dining room
- Study
- Kitchen
- Breakfast room
- Gym
- Principal bedroom with walk-in wardrobe and en-suite
- Five further bedrooms with en-suites
- Self-contained studio apartment
- Two terraces

TERMS

Asking price: £10,000,000

Tenure: Freehold

EPC: Rating E

Local authority: City of Westminster

Council Tax: N/A



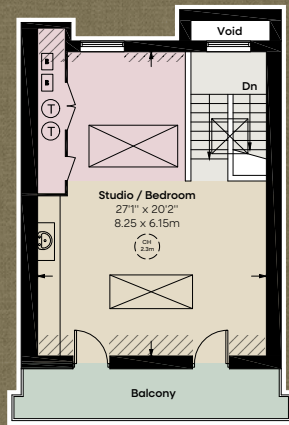
APPROXIMATE GROSS INTERNAL AREA

6,559 sq ft / 609.4 sq m

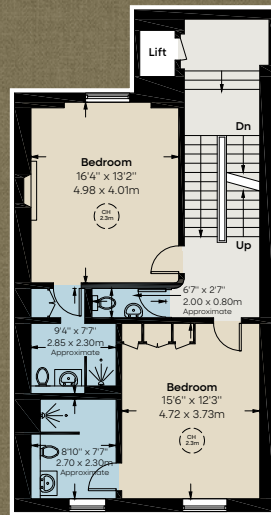
 Hatched Area: Under 1.5m
CH: Ceiling height

This plan is for layout guidance only and is not drawn to scale unless stated. All dimensions, including windows, doors, and the Total Gross Internal Area (GIA), are approximate. For precise measurements, please consult a qualified architect or surveyor before making any decisions based on this plan.

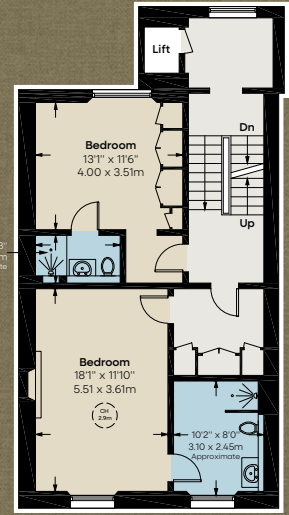
This plan has been supplied to The Brochure by Beauchamp Estates



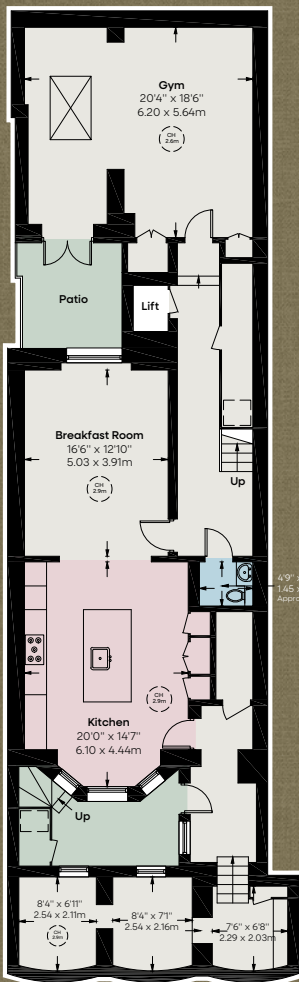
Fifth Floor



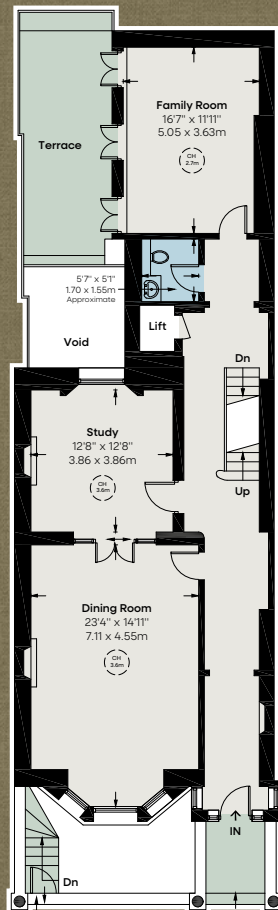
Fourth Floor



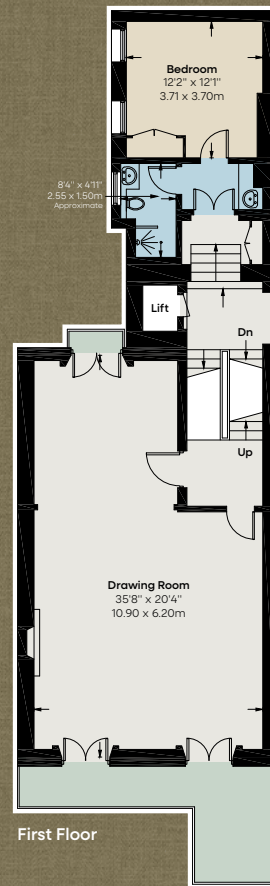
Third Floor



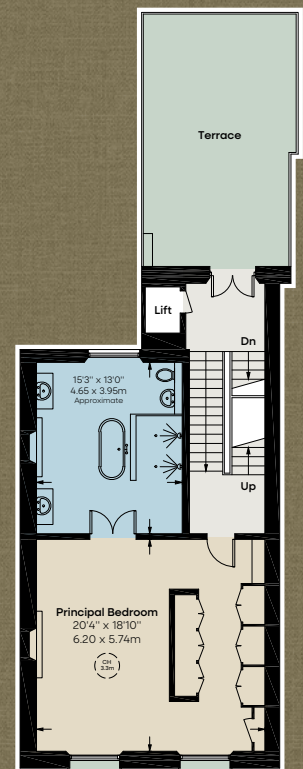
Lower Ground Floor



Ground Floor



First Floor



Second Floor

**BEAUCHAMP
ESTATES**

Beauchamp Estates Head Office
24 Curzon Street
Mayfair, London W1J 7TF

+44 (0)20 7499 7722

londonsales@beauchampstates.com
beauchamp.com

Beauchamp Estates, their clients and any joint agents give notice that: 1. They are not authorised to make or give any representation or warranties in relation to the property either here or elsewhere, either on their own behalf or on behalf of their client or otherwise. They assume no responsibility for any statement that may be made in these particulars. These particulars do not form part of any offer or contract and must not be relied upon as statements or representations of fact. 2. Any Areas, measurements or distances are approximate. The text photographs and plans are for guidance only and are not necessarily comprehensive. It should not be assumed that the property has all necessary planning, building regulation or other consents and Beauchamp Estates have not tested any services, equipment or facilities. Purchasers must satisfy themselves by inspection or otherwise. 02/09/25 BEAU-250829-02-JF