



Northumberland Road, Coventry, CV1 3AQ

**SHELDON  
BOSLEY  
KNIGHT** LAND AND  
PROPERTY  
PROFESSIONALS

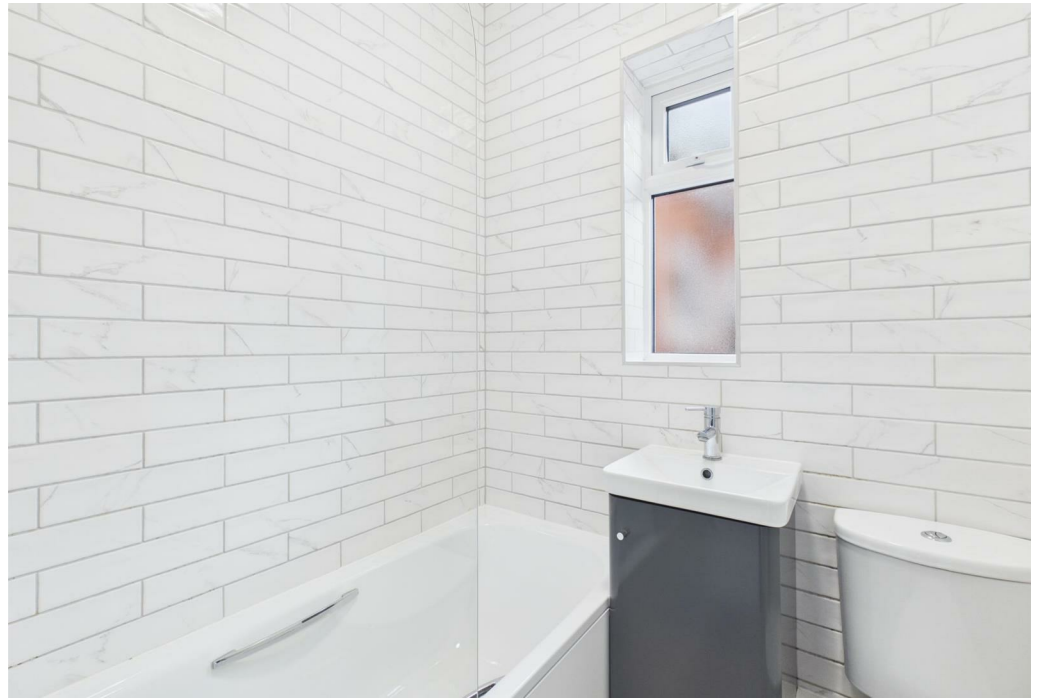
# Property Description

\*\*\* AVAILABLE NOW \*\*\* This well-presented one-bedroom apartment is located in the popular area of Spon End, Coventry, offering convenient access to the City Centre, local amenities, and transport links.

The property comprises a spacious lounge with electric heating, a double bedroom, a modern fitted kitchen with integrated hob and oven with space for a washing machine, and a bathroom with bath, shower over, WC and sink.

Offered UNFURNISHED. Council Tax Band A. Energy Rating E.





## Key Features

- Available Now
- Spon End, Coventry
- One Bedroom
- Off-Street Parking
- Apartment
- Electric Heating First Floor Flat
- Unfurnished
- Council Tax Band A
- Energy Rating E

**£795 PCM**