



The Belfry, £395,000

- Rare opportunity
- Two allocated Parking Spaces
- Expansive open-plan reception room
- Breathtaking countryside views
- Excellent schools and transport links
- Council Tax: D
- EPC Rating: D



 3
  2
  1



About the property

A MUST BE VIEWED!! Presenting a charming home built as a stable serving Sedbury park house in 1898 converted in the 1990's. This beautifully presented three-bedroom terraced home is set in a highly sought after location, celebrated for its history and quality of living. Mixing period charm with modern comfort, it offers a perfect opportunity for families and professionals alike.

The first floor opens into a bright and spacious open-plan living area, enhanced by high ceilings, original features, and large window that flood the space with natural light. From here, far-reaching countryside views create a truly uplifting backdrop. The property also includes a well-fitted kitchen and two double bedrooms on the ground floor and one small double, currently used as a study, on the first floor. The master bedroom is complemented by a stylish en-suite, while the third bedroom provides flexibility for a home office or guest accommodation.

Outside, the home enjoys a private garden, offering a peaceful retreat for relaxing or entertaining. Two allocated parking spots add further convenience. The surrounding area provides easy access to open green spaces and scenic walks, including the famous offas dike path. With its attractive setting, elegant proportions and a thoughtful blend of old and new, this is a rare chance to secure a home of lasting appeal.





Accommodation

Kitchen

11' 2" x 10' 7" (3.40m x 3.23m)

Study

10' 7" x 5' 5" (3.23m x 1.65m)

Living Room

24' 2" x 17' 1" (7.37m x 5.21m)

Bathroom

12' 5" x 6' 2" (3.78m x 1.88m)

Bedroom 1

17' 1" x 10' (5.21m x 3.05m)

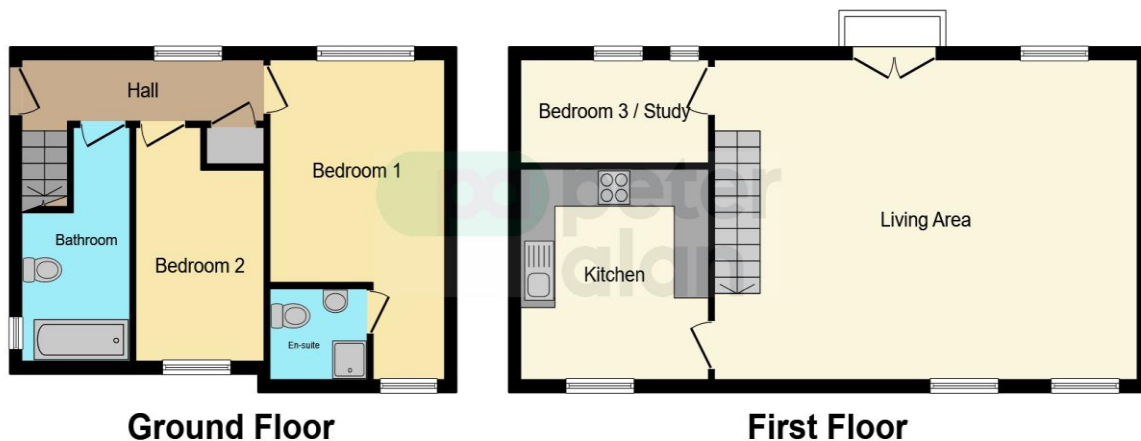
Bedroom 2

12' 5" x 7' 3" (3.78m x 2.21m)

En-Suite

5' 6" x 4' 9" (1.68m x 1.45m)

Floorplan



This floor plan is for illustrative purposes only. It is not drawn to scale. Any measurements, floor areas (including any total floor area), openings and orientation are approximate. No details are guaranteed, they cannot be relied upon for any purpose and they do not form part of any agreement. No liability is taken for any error, omission or misstatement. A party must rely upon its own inspection(s). Powered by www.focalagent.com

Important Information

Note while we endeavour to make our sales details accurate and reliable, if there is any point which is of particular interest to you, please contact the office and we will be pleased to confirm the position for you. We have not personally tested any apparatus, equipment, fixtures, fittings or services and cannot verify they are in working order or fit for their purposes. Nothing in these particulars is intended to indicate that carpets or curtains, furnishings or fittings, electrical goods (whether wired or not). Gas fires or light fittings or any other fixtures not expressly included form part of the property offered for sale. This computer generated Floorplan, if applicable, is intended as a general guide to the layout and design of the property. It is not to scale and should not be relied upon for dimensions. Tenure: We cannot confirm the tenure of the property as we have not had access to the legal documents. The buyer is advised to obtain verification from their solicitor or surveyor.