



Clements estate agents



## Honeycross Road, Hemel Hempstead, HP1 2HZ

### Offers In Excess Of £450,000

Situated in the highly sought after area of Chaulden is this spacious and well presented terraced family home. Boasting four bedrooms, modern newly fitted kitchen, 19'5 living room, dining room, family room, utility area, contemporary bathroom suite, gas central heating, double glazing, off road parking and is being sold with the benefit of no upper chain.

Located within easy reach of Hemel Hempstead Mainline Station with access to London Euston in only 30 minutes, the local shops and transport, Hemel Hempstead Town Centre, and the M1, M25 and A41 road links.

Located on the sought after Honeycross Road in the desirable area of Chaulden, this spacious and well-presented four-bedroom terraced family home offers an ideal blend of comfort and modern living. Spanning an impressive 1,163 square feet, the property boasts three generous reception rooms, including a delightful 19'5 living room, a welcoming dining room, and a versatile family room, perfect for both entertaining and family gatherings.

The heart of the home is undoubtedly the newly fitted modern kitchen, which provides a stylish and functional space for culinary enthusiasts. The property benefits from gas central heating and double glazing, ensuring warmth and energy efficiency throughout the seasons.

Outside, you will find the convenience of off-road parking, a valuable asset in this sought-after location. Additionally, the property is offered with no upper chain, making it an attractive option for those looking to move in without delay.

This terraced house is not just a home; it is a sanctuary for families seeking a blend of space, style, and practicality in a vibrant community. With its excellent amenities and transport links nearby, this property is a must-see for anyone looking to settle in Hemel Hempstead.

### Entrance Hall

### Living Room 19'5 x 11'0 (5.92m x 3.35m)



### Dining Room 10'3 x 9'9 (3.12m x 2.97m)

### Family Room 9'4 x 7'7 (2.84m x 2.31m)



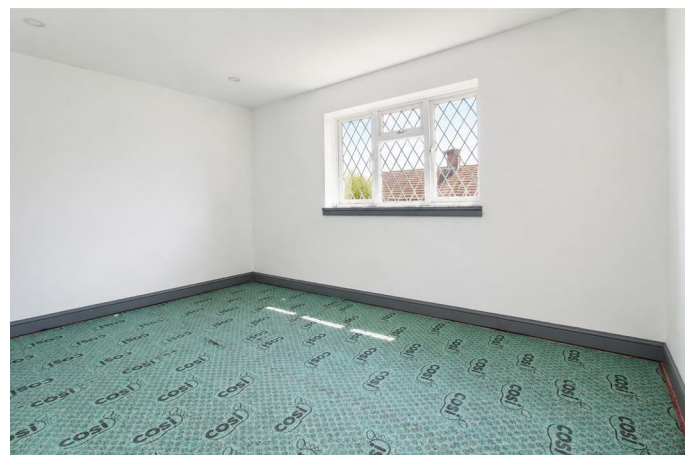
### Modern Fitted Kitchen 11'7 x 9'9 (3.53m x 2.97m)



### Utility Area

### Landing

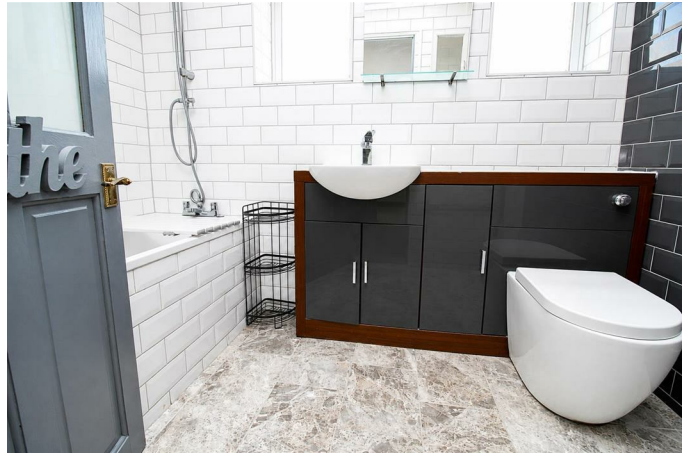
### Bedroom One 13'6 x 10'8 max (4.11m x 3.25m max)



**Bedroom Two 12'0 x 8'7 (3.66m x 2.62m)**



**Bathroom**



**Bedroom Three 10'1 x 7'0 plus door recess (3.07m x 2.13m plus door recess)**



**Off Road Parking**

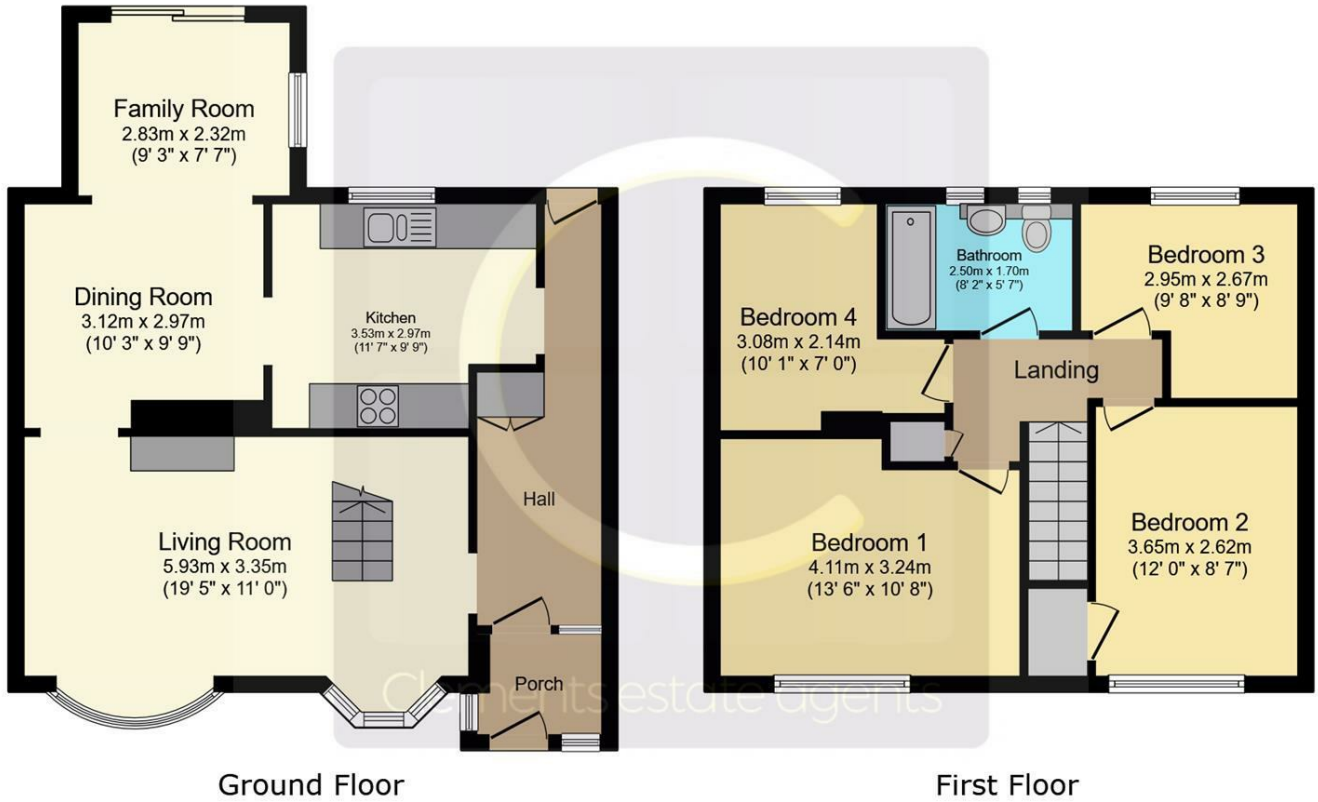
**Rear Garden**



**Bedroom Four 9'8 x 8'9 max (2.95m x 2.67m max)**

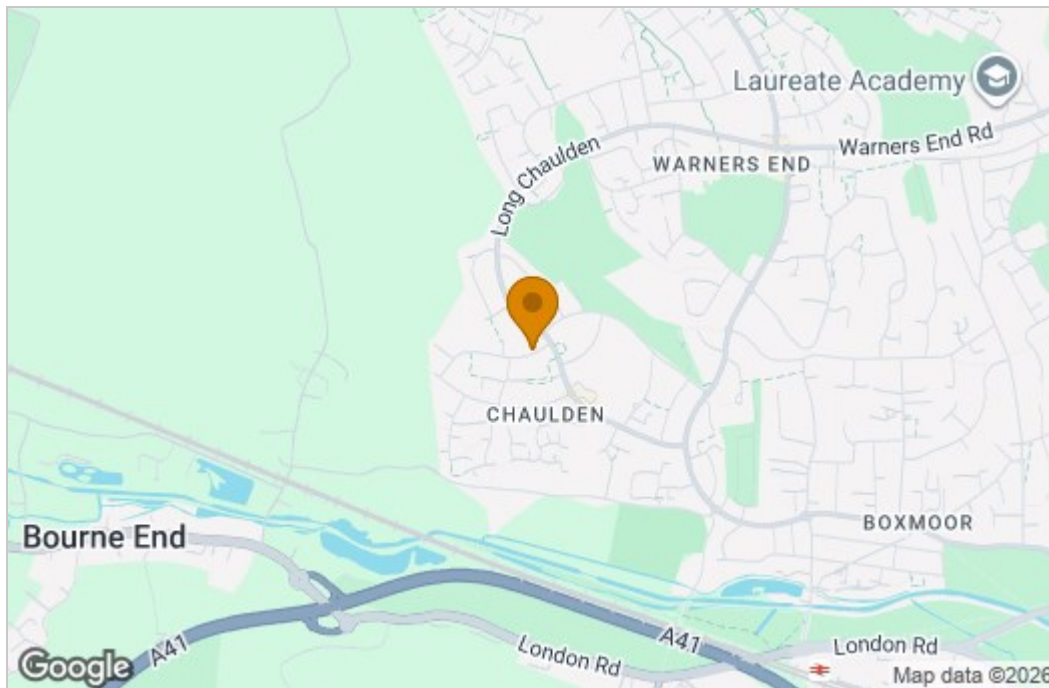


# Floor Plan

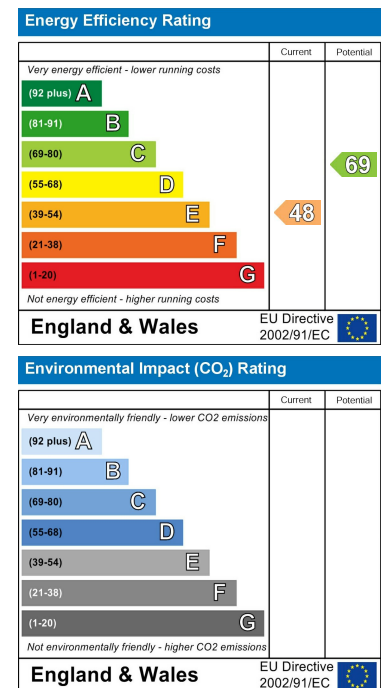


This floor plan is for illustrative purposes only. It is not drawn to scale. Any measurements, floor areas (including any total floor area), openings and orientations are approximate. No details are guaranteed, they cannot be relied upon for any purpose and do not form any part of any agreement. No liability is taken for any error, omission or misstatement. A party must rely upon its own inspection(s). Powered by www.Propertybox.io

# Area Map



# Energy Efficiency Graph



These particulars, whilst believed to be accurate are set out as a general outline only for guidance and do not constitute any part of an offer or contract. Intending purchasers should not rely on them as statements of representation of fact, but must satisfy themselves by inspection or otherwise as to their accuracy. No person in this firm's employment has the authority to make or give any representation or warranty in respect of the property.