



Flat 24, Hometree House London Road, Bicester, OX26 6BP

£900 Per Month - 25th April 2026

- One bedroom retirement flat for the over 60s only
- Kitchen and shower room
- Mains electricity and water
- Council Tax Band A
- Unfurnished
- Electric heating
- Use of car park on first come first served basis
- Lift
- Communal laundry room
- EPC rating C

Hometree House London Road, Bicester OX26 6BP

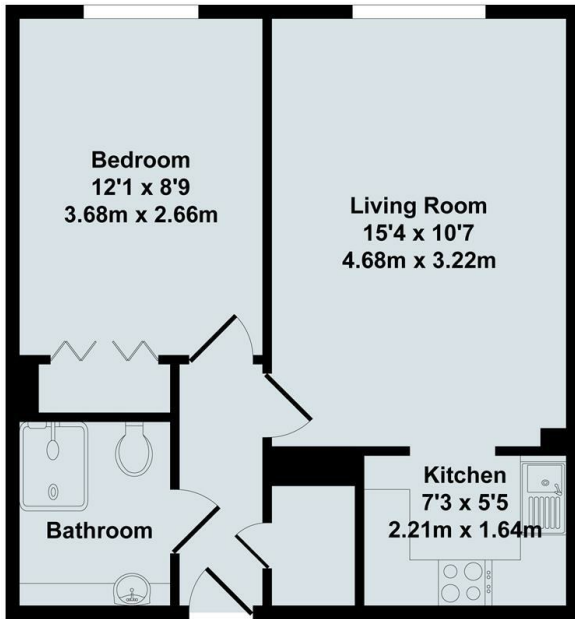
RETIREMENT FLAT FOR OVER 60s ONLY. Located in the centre of the town, a first floor one bedroom retirement flat available for the over 60s and in excellent order throughout. Unfurnished. Lift. Double bedroom, Living/Dining room, Shower room, Fully fitted Kitchen with electric oven and hob. Night storage heaters. Communal gardens. Parking available on a first come first served basis. Home tree House has a range of communal facilities such as laundry room and lounge.
NOTE: Rent includes water rates



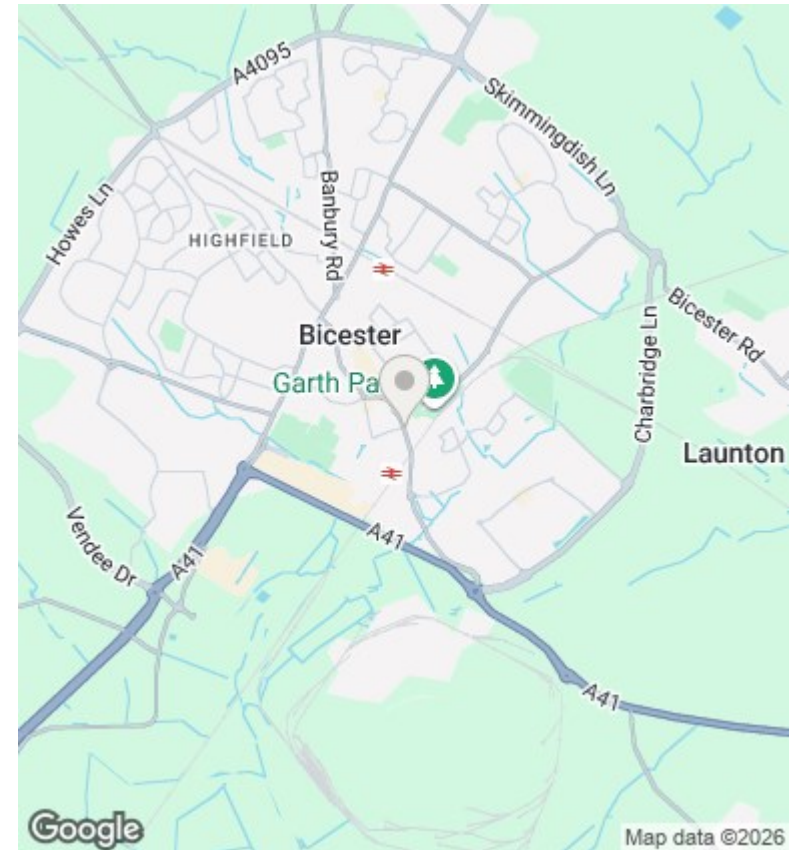
Council Tax Band: A







Total Approx. Floor Area 413 Sq.Ft. (38.40 Sq.M.)
 All items illustrated on this plan are included in the "Total Approx Floor Area"



Directions

Viewings

Viewings by arrangement only. Call 01869 226888 to make an appointment.

Council Tax Band

A

Energy Efficiency Rating		
	Current	Potential
Very energy efficient - lower running costs		
(92 plus) A		
(81-91) B		
(69-80) C	80	81
(55-68) D		
(39-54) E		
(21-38) F		
(1-20) G		
Not energy efficient - higher running costs		
England & Wales	EU Directive 2002/91/EC	