



Churchill Road, Norwich, NR3 4PX

welcome to

Churchill Road, Norwich

New to the market is this handsome two-bedroom mid-terrace, offering a loft conversion and a storage cellar. Conveniently located on the north side of the city centre, offering easy access to all amenities.



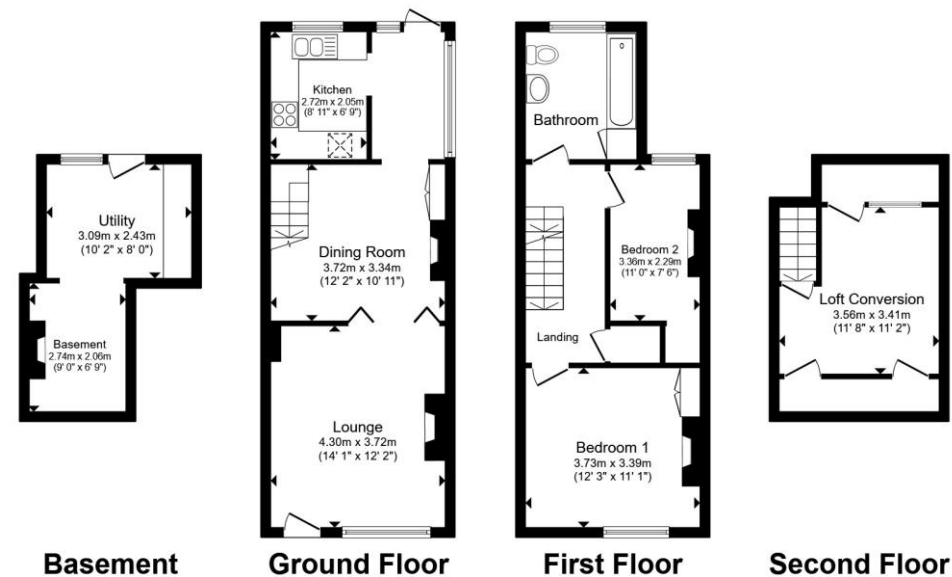
Description

This well-presented home offers a spacious living area, complemented by a separate dining room and an extended modern kitchen, ideal for everyday living and entertaining.

The first floors features two generously sized bedrooms, complemented by a family bathroom, with stairs leading to a loft conversion, offering a multipurpose versatile living space.

The property further benefits from a substantial storage cellar, offering ample storage space and access to an alleyway to the rear. The property combines comfort with practicality, making it ideal for a range of buyers.

Situated in the sought-after location of NR3, close to local amenities, transport links.



Total floor area 105.3 m² (1,133 sq.ft.) approx

This floor plan is for illustrative purposes only. It is not drawn to scale. Any measurements, floor areas (including any total floor area), openings and orientation are approximate. No details are guaranteed, they cannot be relied upon for any purpose and they do not form part of any agreement. No liability is taken for any error, omission or misstatement. A party must rely upon its own inspection(s). Powered by www.propertybox.io


william
h brown



view this property online williamhbrown.co.uk/Property/NOR144326



welcome to

Churchill Road, Norwich

- Close to the city centre
- Storage cellar
- Extended off the kitchen
- Loft conversion
- Two generous bedrooms

Tenure: Freehold EPC Rating: Awaited
Council Tax Band: A

£280,000



Please note the marker reflects the
postcode not the actual property

view this property online williamhbrown.co.uk/Property/NOR144326



Property Ref:
NOR144326 - 0002

1. MONEY LAUNDERING REGULATIONS Intending purchasers will be asked to produce identification documentation at a later stage and we would ask for your co-operation in order that there is no delay in agreeing the sale. 2. These particulars do not constitute part or all of an offer or contract. 3. The measurements indicated are supplied for guidance only and as such must be considered incorrect. Potential buyers are advised to recheck measurements before committing to any expense. 4. We have not tested any apparatus, equipment, fixtures or services and it is in the buyers interest to check the working condition of any appliances. 5. Where an EPC, or a Home Report (Scotland only) is held for this property, it is available for inspection at the branch by appointment. If you require a printed version of a Home Report, you will need to pay a reasonable production charge reflecting printing and other costs. 6. We are not able to offer an opinion either written or verbal on the content of these reports and this must be obtained from your legal representative. 7. Whilst we take care in preparing these reports, a buyer should ensure that his/her legal representative confirms as soon as possible all matters relating to title including the extent and boundaries of the property and other important matters before exchange of contracts.

William H Brown is a trading name of Sequence (UK) Limited which is registered in England and Wales under company number 4268443, Registered Office is Cumbria House, 16-20 Hockliffe Street, Leighton Buzzard, Bedfordshire, LU7 1GN. VAT Registration Number is 500 2481 05.



william h brown



01603 760044



norwich@williamhbrown.co.uk



5 Bank Plain, NORWICH, Norfolk, NR2 4SF



williamhbrown.co.uk